

Capture One 20

Reviewer's Guide



Capture One

3	Introducing Capture One 20
4	User profiles
6	Capture One product line
8	Recommendations for testing Capture One
14	What's new in Capture One 20
21	More new & improved Capture One 20 features
23	General user experience improvements
25	References & resources

Capture One 20

The professional's choice for tethered workflow, precision editing, and optimal RAW conversion



Introducing Capture One 20

Capture One is a complete photo editing software solution, with powerful tools for raw processing, organizing, color grading, layer editing – and much more – it provides full creative control of your images and your workflow. It is designed to help creators achieve their creative visions through a smooth, efficient process, and is distinguished as the professional's choice in imaging software.

Capture One continues to lead the way in RAW conversion and image editing with its precision editing tools and support for more than 500 cameras. Capture One 20 continues to extend its market-leading performance, empowering your creativity and providing a collective toolkit that lets anyone easily produce results that might have been too challenging elsewhere or impossible to achieve in the past.

Updated throughout to make it faster to materialize your vision and to convert your inspiration into top-tier imagery, Capture One 20 ensures the high-quality results that you demand are delivered on time, every time.

The development of this newest iteration of Capture One focused on user feedback to deliver a refined design with new processing capabilities and significant workflow enhancements. Users can work faster than ever and more intuitively, meaning Capture One 20 is more useful and more efficient in everyday work, even easier for new users, more customizable, and still without compromise.

With the help of the Capture One community, we have listened and made the most powerful photo editing software even better.

User profiles

Every creator working with images, regardless of genre or industry, is looking to create without boundaries, deliver or realize final images that make a mark, and to do it with ease, consistency, and speed. This common thread is why our Capture One users and their feedback are so instrumental to this release, as they have helped us find the harmony between possibility and practicality. Capture One 20 is a solution for all types of creative workflows, from students and hobbyists to studios and professional photographers shooting high-volume.

Here is a glance at some of the people who benefit from Capture One.

Professional Creators

Creative professionals across all genres often spend the majority of their time processing, editing, designing and imparting their signature looks to their images. Those images span the gamut of uses from magazine cover layouts, product campaigns and other marketing collateral, to professional portraits and wedding galleries. They seek tools that encourage and enable their creativity, optimize their workflow, and marry classic and time-honored photography techniques with cutting edge tech & implementation.

Businesses

Business users from small high-volume studios to large enterprises need to create and maintain image-rich projects at scale, and the content has to work across multiple channels, be on-brand, accurate, and timely. To manage that level of demand, these users understand a software collaboration can be critical to ensuring brand consistency and performance. They seek software that is not only about the system capabilities that enable efficiency and reduce administrative burden, but also the end-to-end experience, which includes premium support and consultancy.

Everyday Creatives

From phones to mirrorless cameras, in 2020 there are better picture-taking devices than ever, and most people are expressing their creativity through photos. From the designated family photographer, to the landscape hobbyist and budding street photographer, more people want to make the most of their images. These users often rely on software in a tier higher than their gear in order to craft their images into something extraordinary, and they desire a

solution that is easy but powerful, fast, can be personalized and offers affordable and flexible payment plans.

Capture One product line

When it comes to Capture One, users have choice. There are currently a number of Capture One variants, most available through subscription or perpetual license, spare the Express versions which are free for Sony and Fujifilm users respectively, and Capture One Enterprise. Here is a brief breakdown of options and how they differ:

Capture One Pro

This is the primary Capture One variant, offering the full suite of tools and camera manufacturer compatibility. Like all Capture One variants it is available for both MAC and PC.

Capture One Express

This version comes in two variants of its own: Capture One Express for Fujifilm and Capture One Express for Sony. 'Express' versions are fully free image editors for supported Fujifilm and Sony cameras only. *Express* has a limited toolset that includes many (but not all) of the essential develop tools and sharing features found in Capture One Pro.

Capture One (for Sony)

Capture One (for Sony) brings the full feature-set of Capture One Pro at a reduced cost to Sony users. Capture One (for Sony) offers Sony users the opportunity to save on the full feature-set of Capture One Pro with a software version exclusive to Sony files.

Capture One Fujifilm

Capture One Fujifilm offers Fujifilm users the opportunity to save on the full feature-set of Capture One Pro with a software version exclusive to Fujifilm files.

Capture One Enterprise

This is the Capture One enterprise solution. It includes all Capture One Pro features together with highly developed automation technology and specialized tools to accelerate large scale photo production, making it the ultimate workflow solution for multi-user studios and major organizations with in-house production.

Upgrade Program

Customers owning a license of previous Capture One versions are able to easily and affordably stay up-to-date with Capture One 20 by upgrading at a reduced cost.

Recommendations for testing Capture One

Many aspects of the software are unique to Capture One and are unavailable with other RAW processing and image editing applications such as Lightroom. When reviewing Capture One, please make special note of the following:

Capture One Key Differentiators

- Highest quality RAW file conversion with a comprehensive range of professional image editing tools
- Accelerated workflow + multiple ways to Select, Cull, Edit and Export
- Choice of file management system by Catalogs or Sessions
- Superior tethered capture support
- Customizable workspaces and shortcuts

Image Quality

Known and respected for its ability to generate extremely high-quality conversions from RAW files, with Capture One the utmost care is taken in the preparation and support for new camera models, resulting in color and noise profiles that provide exemplary results out of the box.

Supporting a camera in Capture One is a detailed process that does not depend on just a few supplied RAW files; rather, the development team tests the software in various photographic scenarios with the specific camera in hand. At the end of the process, the team has produced a great deal of captures for each camera to ensure image quality. satisfaction from any of the many supported models.

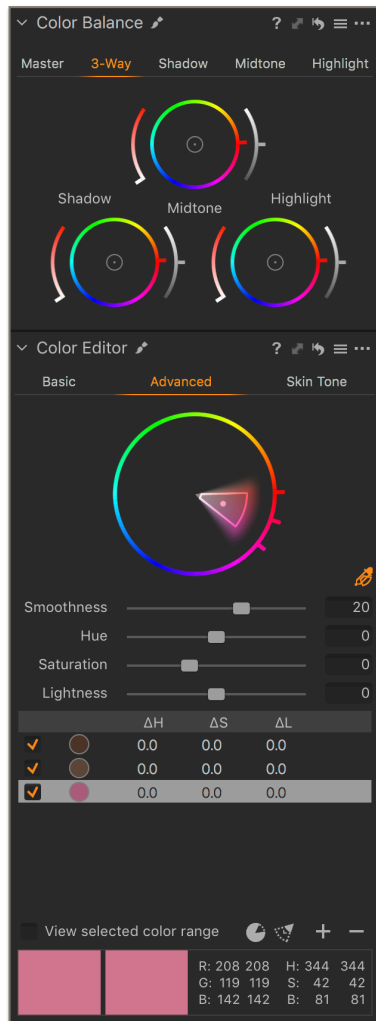
Performance

You will find navigating Capture One to be fast and smooth when using a reasonable system. Try importing, browsing, zooming, adjusting etc. Images build rapidly to 100% view, which is also cached when performing tasks such as side-by-side comparisons.

*Capture One is capable of using all computer resources. i.e. processor speed / cores, RAM, and GPU.

Image Adjustments

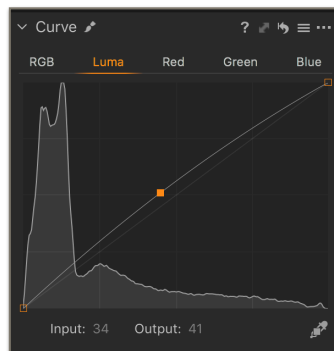
Tools such as the **Color Editor** and **Color Balance** tool are unique to Capture One, allowing precise adjustment of individual colors and infinite possibilities for color grading an image.



Color selections also can be transformed into Layer Masks for even more possibilities for precise and controlled adjustments.

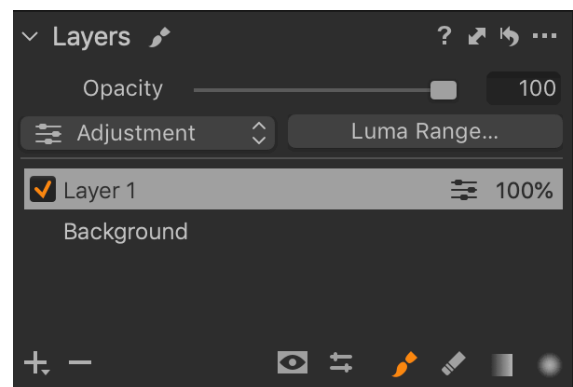
The Contrast slider specifically adjusts contrast, leaving Hue and Saturation largely untouched: much like a **Luma Curve**, but with the simplicity of a slider.

For even more control, the Luma option in the Curves tool simply does what the Contrast slider does, but with greater flexibility.



Layered Workflow

Adjustments can be placed on Layers with a similar but simplified principle to Photoshop, where each layer can be masked to allow targeted adjustments in areas of the image. The opacity of each layer can be varied independently of others and adjusted further with options for Feathering and Refining the mask.



Masks are created with Brushes, the Radial or Linear Gradient Tool, or transformed from Color Selections in the **Advanced Color Editor**.

With varying levels of Opacity and Flow available, complex masks can be created quickly and easily, making it particularly suitable for local-exposure adjustments like Dodging & Burning.

With the ability to place the Color Balance tool on a further layer, a final Color “grade” can be decided upon without having to apply it to the image. As such, precise adjustments are easily achieved, especially when coupled with other tools such as the Color Editor and Curves.



Interface, Customization, Workflow

As previously mentioned, one of Capture One’s differentiators is the ability to heavily customize the interface and shortcuts for his or her own unique needs.

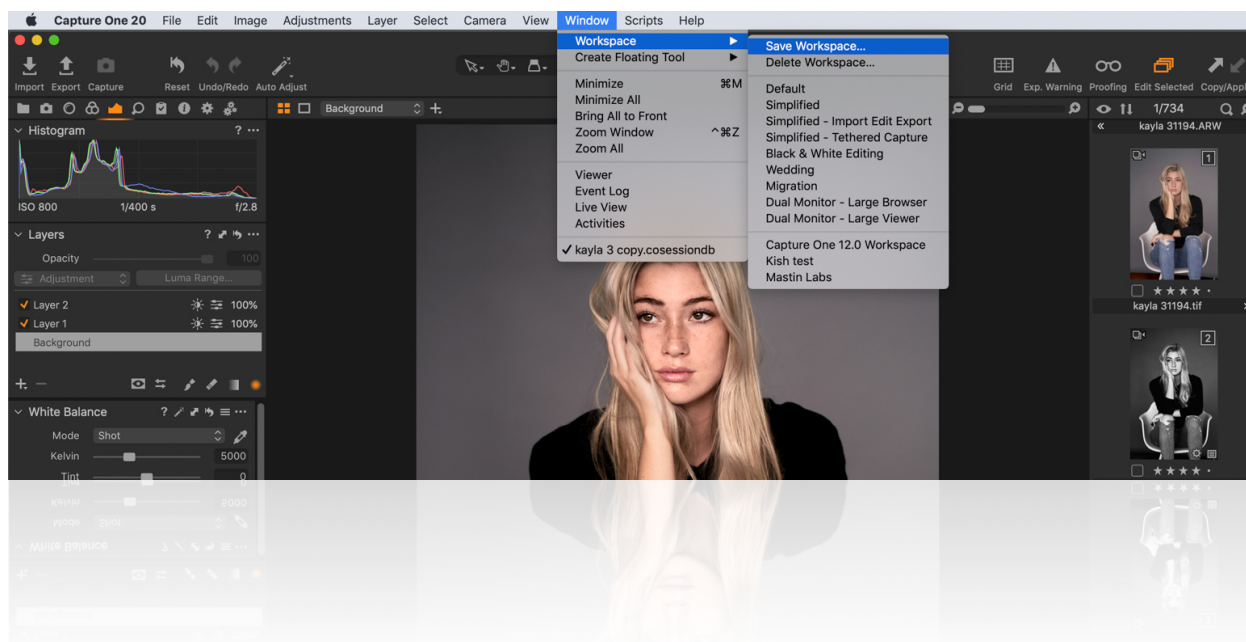
The interface is not 'modal'. There are no Develop / Library modules as found in Lightroom, so you can simply move through adjustment or management



tasks instantly. Here is a basic look at the main interface:

While there are many workflow practices similar to other applications, Capture One's roots began in high volume, fast-paced environments, so the ability to run multiple process actions simultaneously with automatic creation of destination folders is a feature to note, and one that is much welcomed by

professional customers. You can find all default workspaces and those that you make here:



Tethered Capture

Capture One's tethered performance and control is unmatched by any other application available, with the amount of time from capture to review is nearly imperceptible on a modern system.

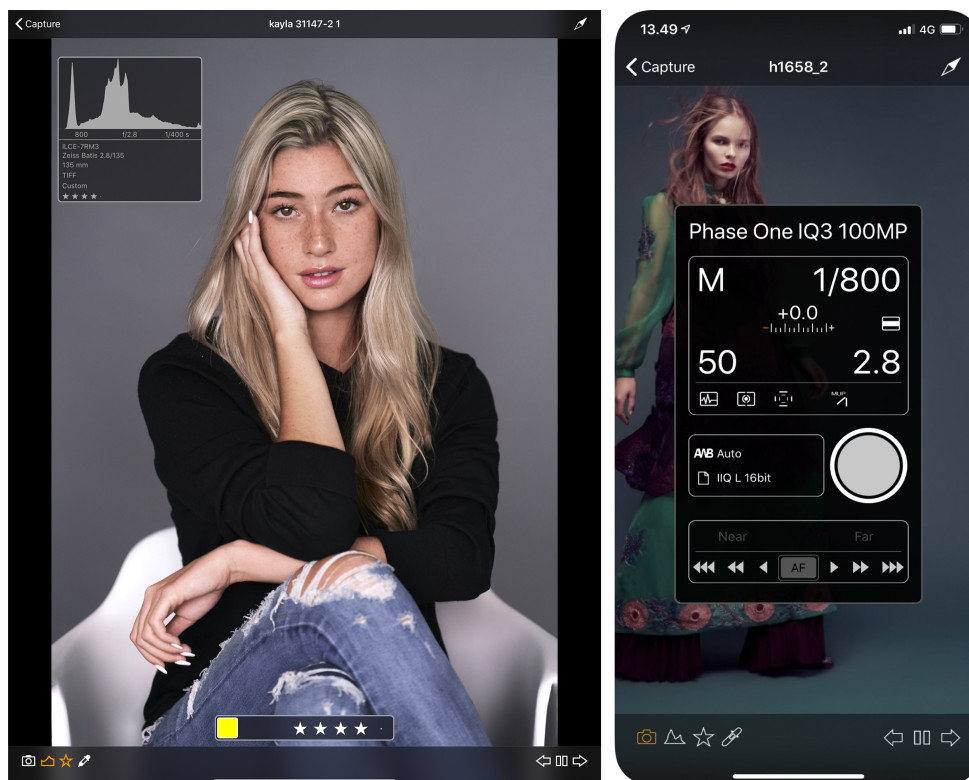
Capture One's **Camera Tool** and **Camera Settings Tool** allow complete interactivity with the attached camera: for setting parameters, triggering capture and live-view options. The **Camera Focus Tool** allows the user to 'nudge' focus in critical situations without having to disturb the camera.

Watch this [video](#) about shooting tethered.

The **Overlay Tool** can also work in tandem with tethered capture to use graphics or other images as overlays to ensure optimal composition of your image. Those overlays can be seen in real time and can be included as a separate layer in your exported PSD file for perfect flexibility.

[Capture Pilot](#) for iOS Devices and Web, allows remote wireless viewing of Capture One, and also camera control. It is designed for collaboration on set between Photographer, Stylist, Make Up Artist, Assistant and Client.

Watch this [video](#) about shooting tethered using Capture Pilot



Asset Management: Catalogs & Sessions

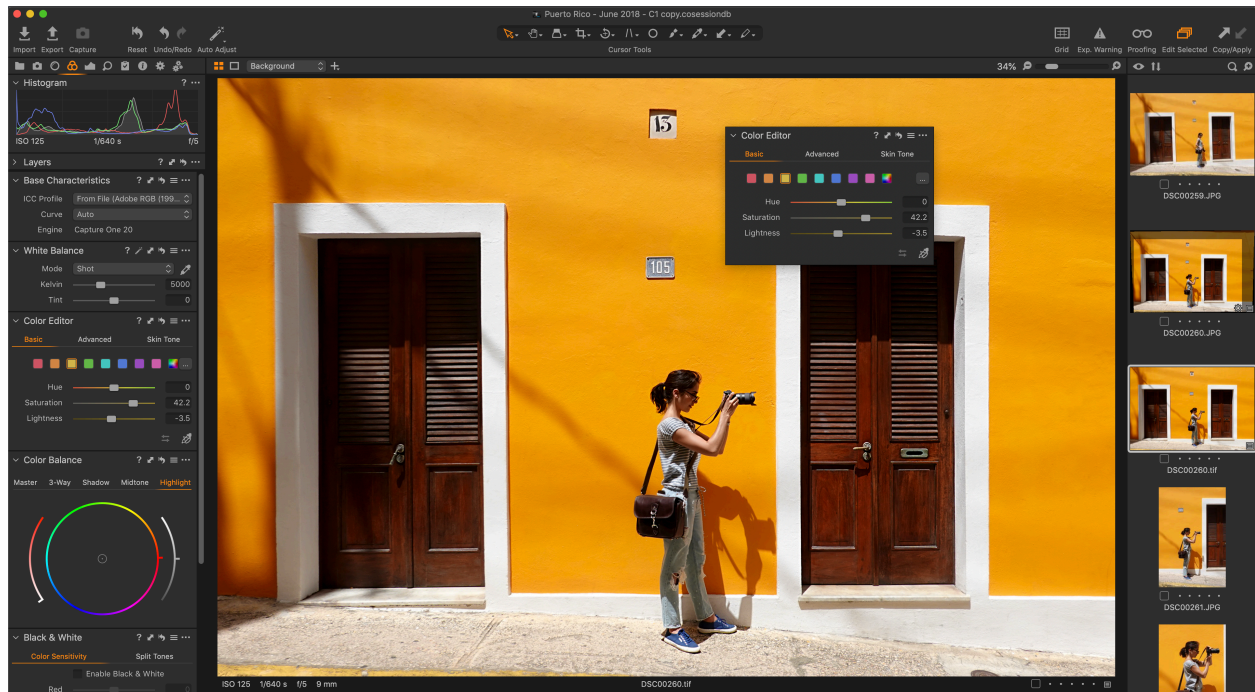
Asset management is important for every photographer, be it management of images from individual day-to-day jobs or large collections with thousands of images. Whether you want to manage smaller day-to-day jobs, large collection of images or need a stand alone image editing tool, Capture One has a robust workflow that suits your way of working. Sessions are designed for most day-to-day jobs and individual projects, Catalogs for large collections of images and you can even use them in tandem for the best of both worlds.

Keyboard Shortcuts

Capture one offers an extensive collection of keyboard shortcuts arranged in sets to help speed up your workflow, and can be customized to taste. They are assigned not just to the main menu but to many other tools and features, including options for the workspace (such as selection of the tool tabs, cursor tools and displaying or relocating the browser), certain adjustments (including rotating images, rating and color tagging) and many others.

What is new in Capture One 20

New Basic Color Editor



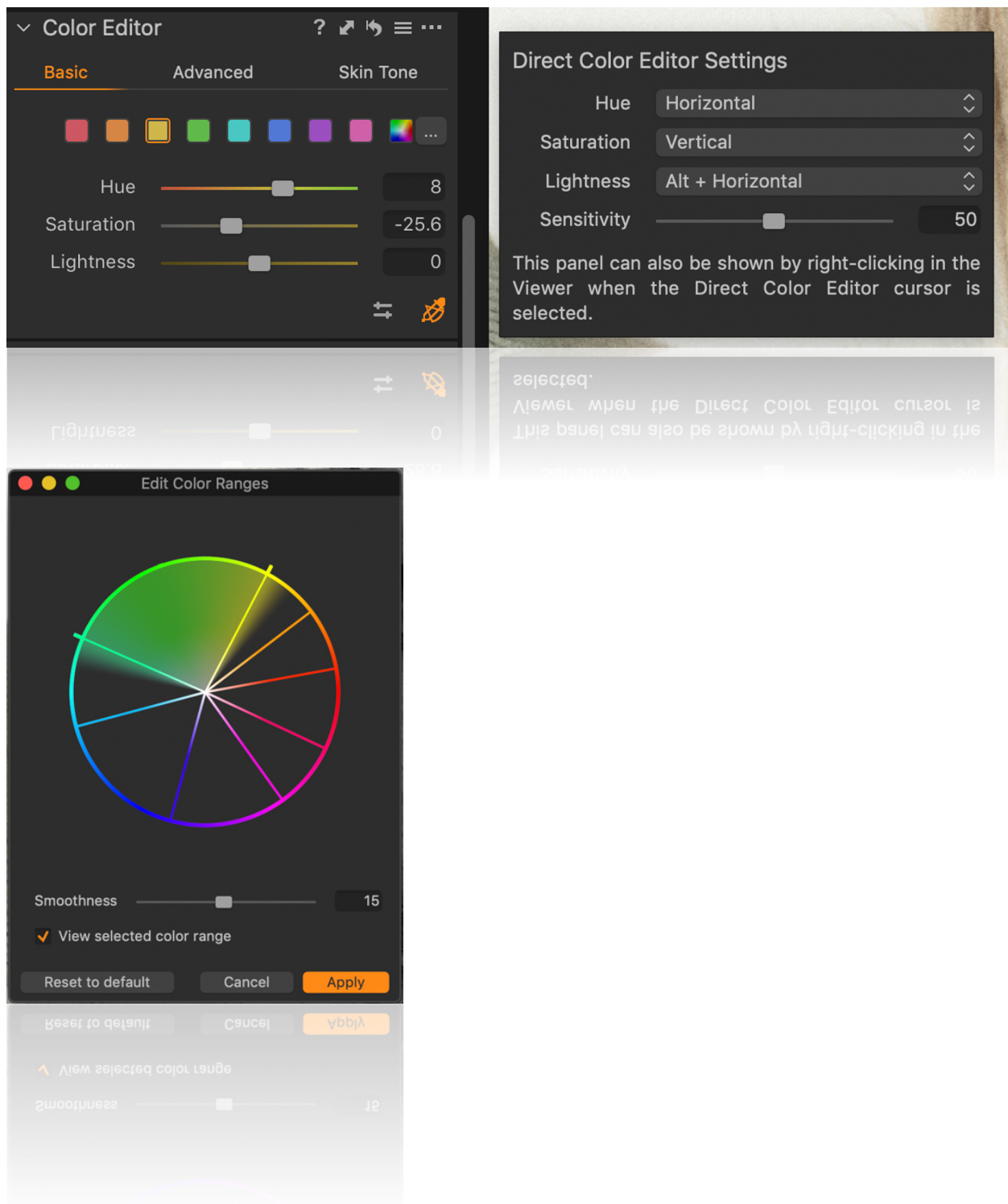
Control color faster and more precisely

The **Basic** tab of the Color Editor has been re-designed to be smaller but provide more options than previously available. Two additional color ranges have been added, splitting the spectrum into eight ranges instead of six, with each available from color patches and adjustable with sliders that now show gradient colors, indicating their effect. Additionally, the Basic Color Editor now works on Layers.

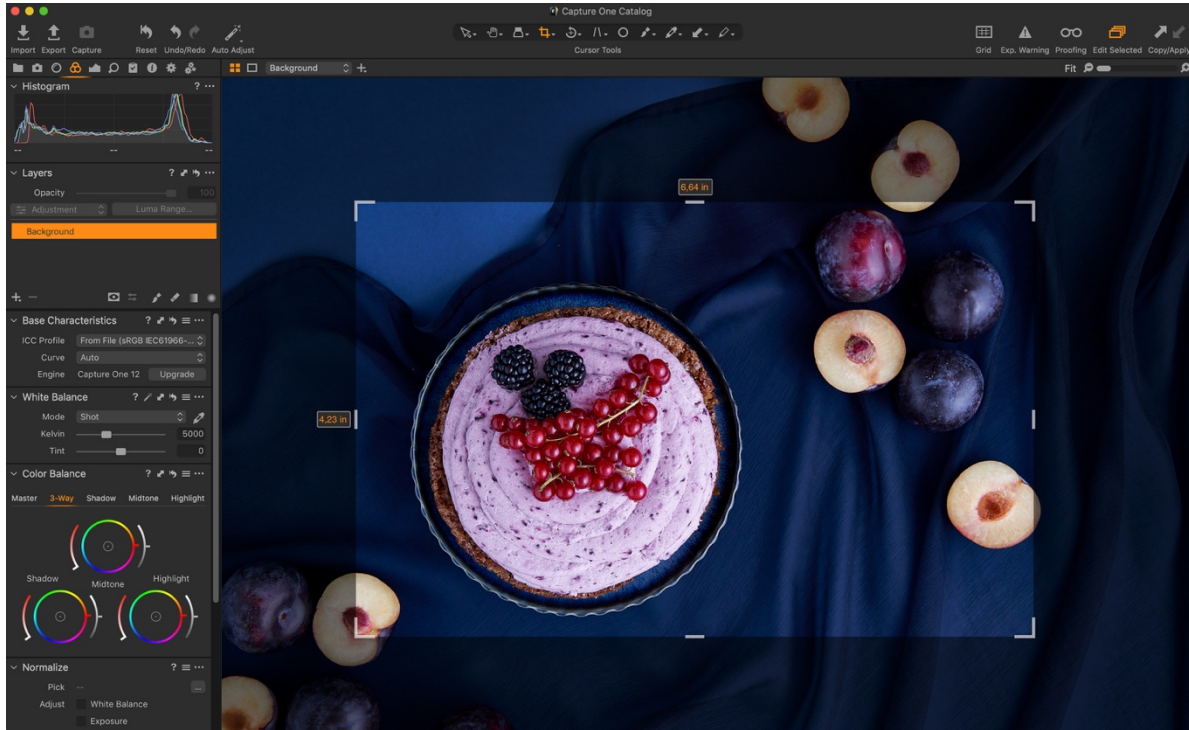
The **Direct Color Editor** is the new *Cursor Tool* in the Basic Color Editor. It allows you to click and drag anywhere on your image and have the corresponding color change. The direction of your movement when dragging determines which slider you change, and the third option is available using the ALT key. The sensitivity can also be adjusted.

If you need to change the ranges, the spectrum is available from the (...) button. Any changes made to the spectrum will be reflected in the color patches and gradients on the sliders.

Testing suggestion: Adjust color ranges, use Layers with Basic Color Edits, change the ranges, and use the Direct Color Editor directly on the image. Apply Styles from previous versions to test migration of adjustments. Please note: Advanced and Skin Tone has not changed.



New Crop Tool



Getting the perfect composition has never been easier

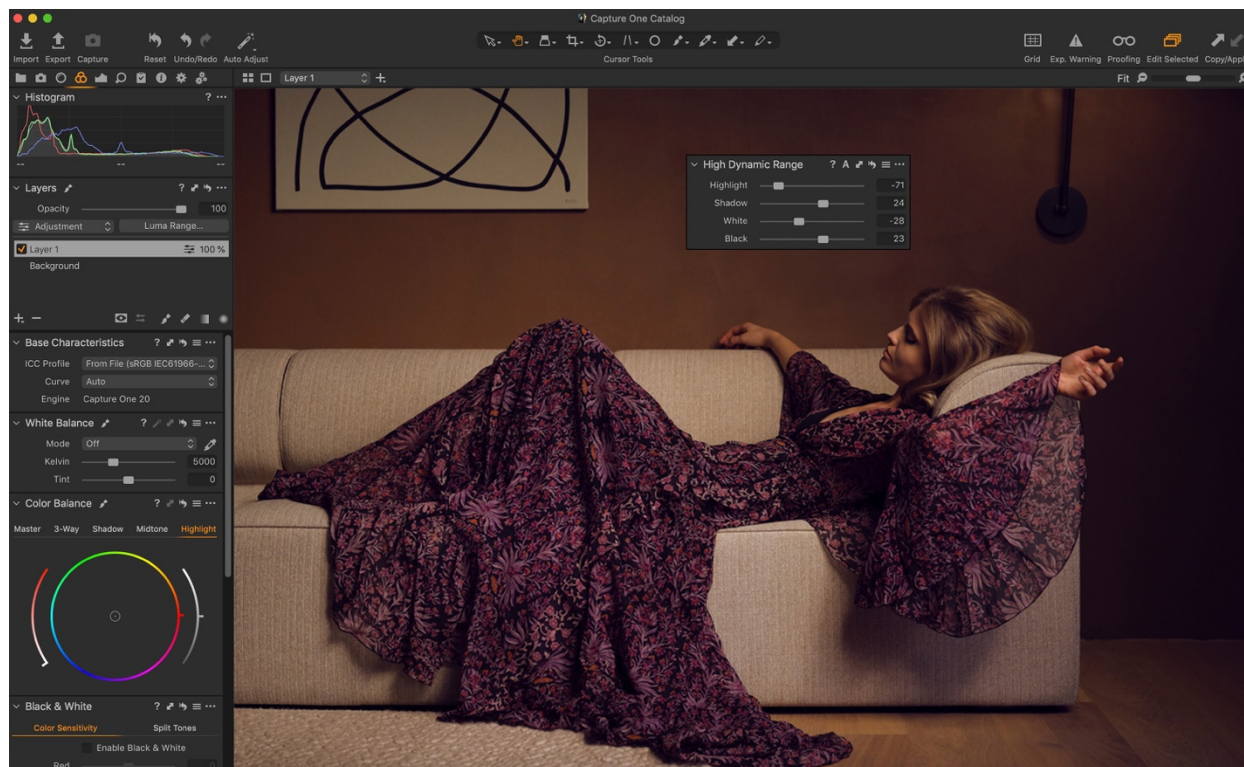
The new Crop tool is at once the most advanced crop tool to be implemented in Capture One, and the most straightforward to understand and use.

With Capture One 20 it is now easier to crop with more easily visible edges of the crop with new handles. New modifier keys have been also been introduced, allowing cropping from center [ALT] and locking the current aspect ratio [Shift]. Additionally, freehand rotation can be accessed by either moving the cursor outside the corner of the crop, or by using the modifier key [CMD/CTRL], and upon request, Hitting *return/enter* while using the Crop Tool will now switch to the Pan Cursor Tool and show the image in its cropped state.

All of this builds on the existing Crop Tool which allows you to do the industry standards such as setting aspect ratios and specific crop size by value, but also allows you to Crop to Path where Capture One will embed the crop outline and dimensions as a Photoshop Path when using a PSD file; auto-crop for lens distortion, and change the crop grid from the standard to specialized grids like the Golden Ratio, Fibonacci Spiral and so on.

Testing suggestion: Use the Crop Tool as you normally would. Try different modifier keys in different scenarios.

New High Dynamic Range Tool



Take total control of your contrast and tonal range

The High Dynamic Range tool targets primary areas of detail recovery and contrast along the tonal range. Historically for Capture One that has been the Highlights and Shadows, controlled via sliders that could strictly move in the direction of recovery without a way to amplify either the shadows or highlights.

Capture One 20 brings a new, improved, and expanded feature-set to the High Dynamic Range tool with the addition of White point and Black point sliders, and now all sliders zero out in the center and can be moved left or right to either recover detail from the shadows and highlights or exaggerate them and boost contrast.

This all means the High Dynamic Range tool is now more powerful than ever, as it enables fine-tuning of contrast in a fast and easy way. It's meant for high-

speed workflows and as a supplement to the more advanced control you can achieve with Levels and Curves.

Testing suggestion: Edit photos as you normally would and apply Styles from previous versions that include Highlight and Shadow. Use the tool on Layers as well.

New Noise Reduction



Capture One 12 vs. Capture One 20

Get the cleanest possible images

Capture One's approach to **noise reduction** has been a tailored one as all cameras have their own noise reduction for each ISO and Capture One optimizes for each supported camera.

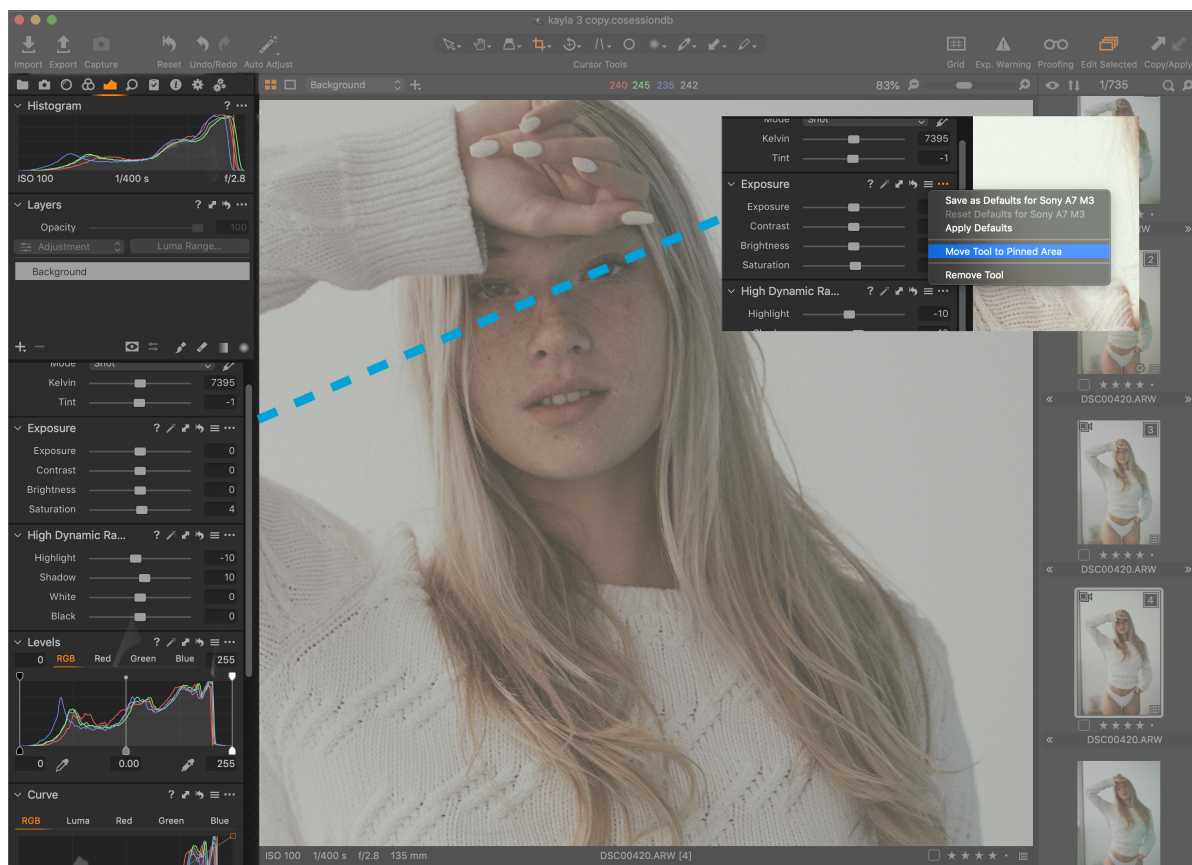
In Capture One 20 the Noise Reduction Tool has been re-engineered for improved performance. It tackles noise on two fronts: luminance noise and color noise, and Capture One 20 brings improved recognition of patterns and edges; better color noise reduction; bigger impact of the **Amount** slider, and stronger noise reduction for images shot with a high ISO. Not only does it provide a higher level of noise reduction and detail retention, but also holds

color accuracy. This will be a boon for any low light shooting, and particularly for genres such as weddings, events, concerts, and more.

The tool is intelligent. The default setting will provide noise reduction results based on your ISO setting. Because of this, Capture One 20 will provide pleasing results - even without tweaking noise reduction.

Testing suggestion: Compare results of Capture One 20 with previous versions.

Scrolling Tools



Navigate your way, and fast

The re-designed Tool Tab navigation makes it easy to work more quickly and intuitively, allowing you to scroll through all your tools with ease and pin your favorites to the top for instant access.

As suggested above, every Tool Tab now has two sections; a pinned section and a scrollable section. The new default workspace for Capture One 20 has

tools divided into both sections, the purpose of which is to allow pinning of tools to the top of the tool tab while scrolling below.

Tools can be easily moved between the two sections, either by dragging or by opening the tool submenu (...) and selecting “Move Tool to Pinned/Scrollable Area”.

If you prefer, you can, for example, put all tools in the pinned area, effectively making Capture One 20 function just like previous versions.

Testing suggestion: Use Capture One as you normally would and build your own workspace by placing tools in both sections.

More new & improved Capture One 20 features

The Capture One team is dedicated to providing its users with long-term support that extends beyond creating new features and new camera profiles. It means constantly evaluating all aspects of the software and improving upon features that already exist and even those that are much loved.

Updated Appearance & Interface

Get the smoothest editing experience

With Capture One 20 you can Identify tools more easily with labels, instantly access Masking tools, and adjust the viewer background color with one click. Plus, get even more precision and consistency with a redesigned white balance picker.

Improved copy/apply of Layers

Capture One 20 opens up for a more flexible, layer-centric workflow. You can now select which layers you would like to copy to other images, where you previously would have to copy everything or nothing. Additionally, the Layers that get applied to other images will now be added on top of any Layers that might already be present, instead of replacing them.

It is now possible to copy and apply Layers between images of different dimensions as well, making it much easier to streamline a workflow where, for example, multiple cameras are used, and Styles are applied to Layers.

Testing suggestion: Copy Layers with custom masks, Gradient Masks (Linear and Radial) and Layers with filled masks between images. If possible, try to copy and apply between images from different cameras or between different file formats (RAW, TIFF, JPEG).

Improved Support for DNG files

Edit spectacular DNG files

DNG files come in all shapes and sizes. If Capture One has implemented support for a camera model, the DNG file it creates will have individually tweaked colors with our custom profile. With Capture One 20, DNG files from camera models that are not supported will still look great. This opens up for great color profiling of all smartphones, drones and camera models that capture in DNG format.

Select Next When

This functionality works with Sets (a selection of multiple images). Select multiple images and disable 'Edit All Selected Variants'. When star rating or color tagging, the selection will move through the Set and switch to the next Set of the same size once the last image is rated.

Testing suggestion: Enable the two functionalities individually or at the same time and sort your images. Use with Sets with 'Edit All Selected Variants' disabled.

General User Experience Improvements

License keys for all variants

Capture One 20 will require a license key for all variants to run. Capture One will automatically detect the variant based on the license key, eliminating the need to pick the correct variant in the start-up screen.

Adjustment Clipboard Improvements

When copying adjustments to the clipboard with 'Auto-select adjusted' enabled, groups without adjustments will be collapsed, providing a clearer overview of what will be included when pasting to other variants.

Toolbar text and icons

The icons in the toolbar now has text under them as default, making the interface easier to understand. This can be toggled on and off by right-clicking the toolbar.

Masking cursor tools arrangement

The cursor tools for masking (brush, eraser, linear and radial gradient) have been moved out of the drop-down menu and placed in the Layers tool for easy access.

Viewer background color

Changing the background color of the viewer is now available directly by right-clicking the background itself. These options are also available in the View-menu, and they have new shortcuts assigned [Shift + 1, 2, 3... 6].

Browser thumbnail resolution

The resolution of the thumbnails in the browser has been increased by 50%.

White Balance Picker

The White Balance Picker has been re-engineered to provide a much higher consistency. Previously, results could deviate based on the noise on the image.

Process button moved

The button for activating the selected Process Recipes has been moved to the Process Recipes tool instead of being located in the Process Summary Tool.

Keyboard shortcuts + Shortcut Changes

Instant results in just a few keystrokes.

With default keyboard shortcuts, everyday editing is easy and fast. Plus, customize the shortcuts further to create your ideal workflow.

To improve the ease of use of Capture One 20, the default shortcut set has received the following changes and additions:

Proof Margin:	X
Direct Color Editor:	D
Hide Viewer:	G
Linear Gradient:	L
Zoom to 100%:	. (period)
Zoom to fit:	, (comma)
Toggle Focus Mask:	Q
Full Screen:	F (On Windows F11 works as a secondary shortcut)

Viewer background color can be toggled using [Shift + 1, 2, 3... 6]

References & resources

We will be happy to arrange for you to speak with a photographer who is currently working with Capture One 20 or with a Capture One expert for more detailed information.

Resources:

Training and support options:

- Customizable workspaces and shortcuts
- Capture One Learning Hub: learn.captureone.com
- Capture One Blog: blog.captureone.com
- Capture One YouTube channel: www.youtube.com/CaptureOneProDK
- Capture One Help Site: help.captureone.com
- Capture One training is available on educational sites such as: Creative Live, Lynda.com, Video2Brain, jointhebreed.com, rggedu.com, and others

Connect with us on social media:

Capture One at: www.captureone.com

Phase One at: www.phaseone.com

Facebook at: www.facebook.com/CaptureOnePro

Instagram at: www.instagram.com/CaptureOnePro

YouTube at: www.youtube.com/CaptureOneProDK

Twitter at: www.twitter.com/captureonepro

LinkedIn at: www.linkedin.com/company/capture-one/

Media contact:

Nadia Julie Froberg: njf@phaseone.com