



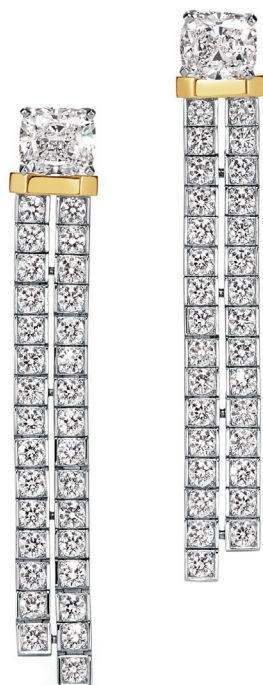
Preview

The Edge Collection

TIFFANY & CO.

Tiffany Edge

The Edge Collection reimagines diamond jewelry from a contemporary point of view. A signature 18k gold accent joins together multiple rows of brilliant cut diamonds on each design. This detail is sophisticated, functional and uniquely Tiffany. The clean lines with maximum sparkle allow Tiffany Edge to be the focal point of one's style, it can also be incorporated into a stack as an everyday diamond essential.



71451852

Earrings in platinum and 18k yellow gold with diamonds.



71451860

Earrings in platinum and 18k yellow gold with Fancy Intense Yellow and white diamonds.



71451844

Necklace in platinum and 18k yellow gold with Fancy Intense Yellow and white diamonds.



71451836

Necklace in platinum and 18k yellow gold with diamonds.



70919796

Necklace in platinum and 18k yellow gold with diamonds.



70919885

Earrings in platinum and 18k yellow gold with diamonds.



70920174

Bracelet in platinum and 18k yellow gold with diamonds.



70920204

Bracelet in platinum and 18k yellow gold with diamonds.



70920778

Bracelet in platinum and 18k yellow gold with diamonds.



Ring in platinum and 18k yellow gold with a Fancy Intense Yellow diamond and white diamonds.



Ring in platinum and 18k yellow gold with diamonds.



70920689

Ring in platinum and 18k yellow gold with diamonds.



70920484

Ring in platinum and 18k yellow gold with diamonds.



70919907

Earrings in platinum and 18k yellow gold with diamonds.



70919869

Pendant in platinum and 18k yellow gold with diamonds.



70919842

Pendant in platinum and 18k yellow gold with diamonds.

TIFFANY & Co.