

TOWARDS A SUSTAINABLE ECONOMY 2035

JRC FORESIGHT STUDY
Four 2035 visions for paths towards a sustainable EU economy

CURRENT SITUATION

ENVIRONMENTAL DEGRADATION



UNSUSTAINABLE RESOURCES USE



NEW CHALLENGES TO ECONOMIC GROWTH

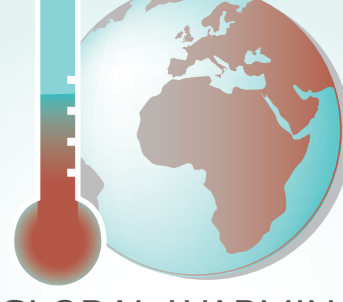
TRENDS



MORE PRESSURE ON NATURAL RESOURCES

STRONG GROWTH OF THE WORLD POPULATION

7.4 billion to est. 8.6 billion by 2035



GLOBAL WARMING

could reach 2°C = sea level rise + damage to agriculture and infrastructure



URBANISATION

MEGA CITIES in the developing world + more MID-SIZED CITIES in Europe = changes in socio-economic conditions

Successful societies will be built on SUSTAINABILITY



ECONOMIC

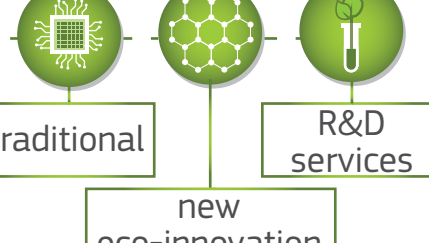


SOCIAL



ENVIRONMENTAL

How can **ECO-INDUSTRIES** and other parts of the economy best contribute to meeting the EU's goals on sustainability, resource efficiency, growth and jobs?



HOW TO GET THERE



WE NEED TO



REDUCE POLLUTION



ENSURE CONTINUED SOCIO-ECONOMIC DEVELOPMENT



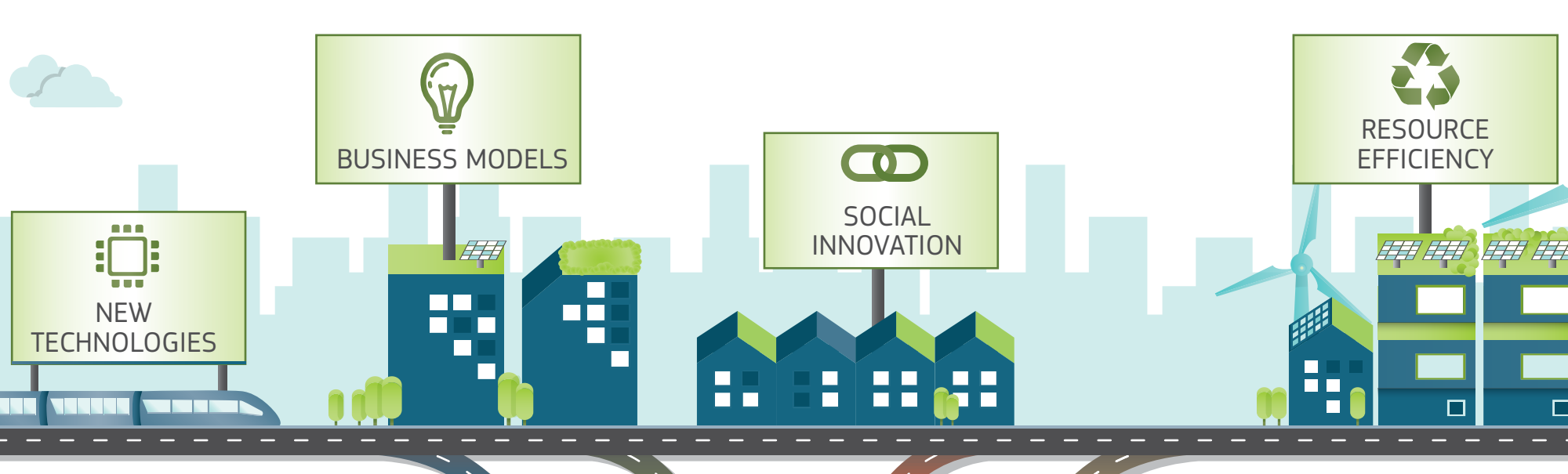
FIGHT CLIMATE CHANGE



SECURE ENERGY SUPPLIES

all at the same time, in a cost-effective way!

DIFFERENT WAYS TO ACHIEVE THIS

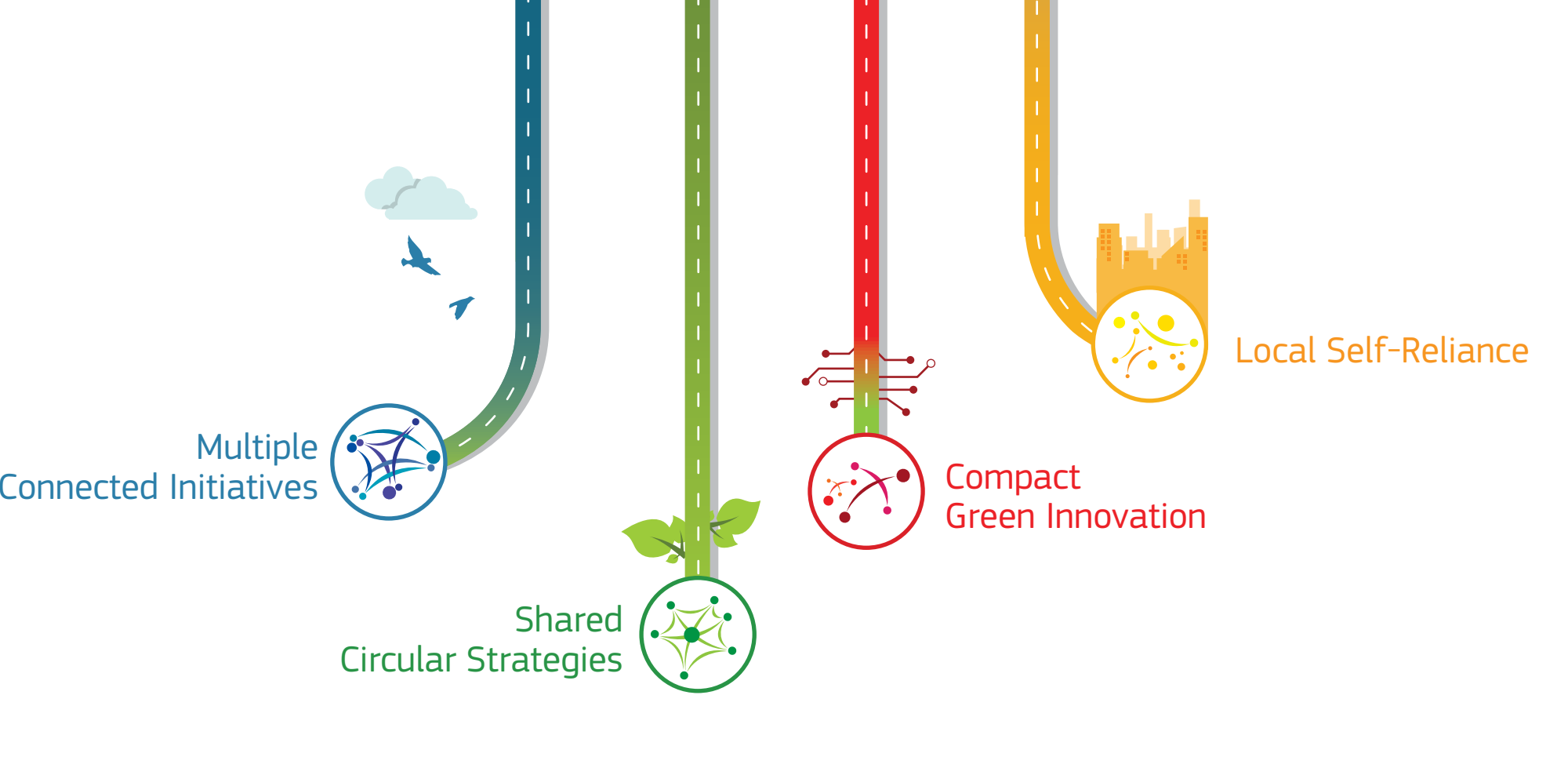


Four possible paths in the JRC foresight study

Fiscal framework

Societal values

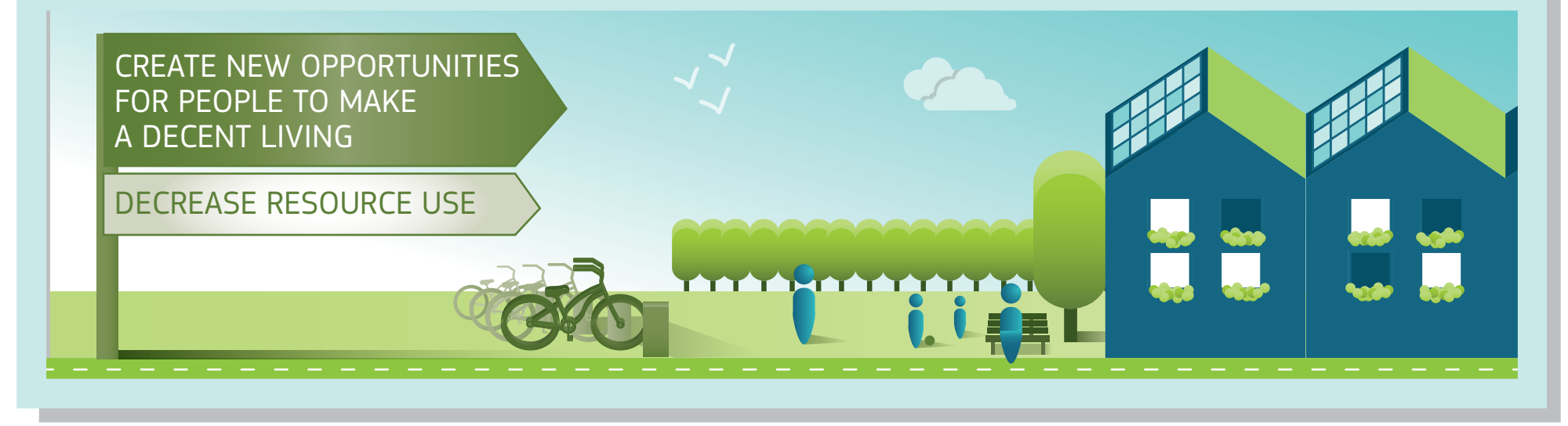
4 SCENARIOS



CONCERNS

- Entire economy and society must be "greened"
- Limited recognition and understanding of industry's role as a major driving force

RESOURCE-EFFICIENT AND LOW-CARBON BUSINESS MODELS



RECOMMENDATIONS



POLICY MATTERS to manage change + steer social and economic evolution



NEW FORMS OF GOVERNANCE to address societal, economic and technological change + introduce new, service-based business models



GREEN TAXATION to help introduce new business models + could boost employment



NEW METRICS GDP and other indicators + environmental and social aspects = integrated view of life-cycles (of products, of business units, etc.) and value chains

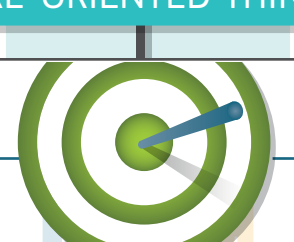


NEW FINANCIAL MODELS AND NEW WAYS TO INVEST



EDUCATION IS ESSENTIAL basis of societal values, environmental awareness, innovative capacity and other fundamental factors

FUTURE-ORIENTED THINKING



vital to be able to meet future challenges proactively

does not predict the future, but invites consideration of the future as something that can be created or shaped

foresight gathers anticipatory intelligence and links it to today's decision-making

Discover what going towards a sustainable future could mean for you!

Read the Foresight study and possible scenarios
Play the JRC Scenario Exploration System

Find out how the JRC EU Policy Lab can help you: <http://europa.eu/InG93fU>