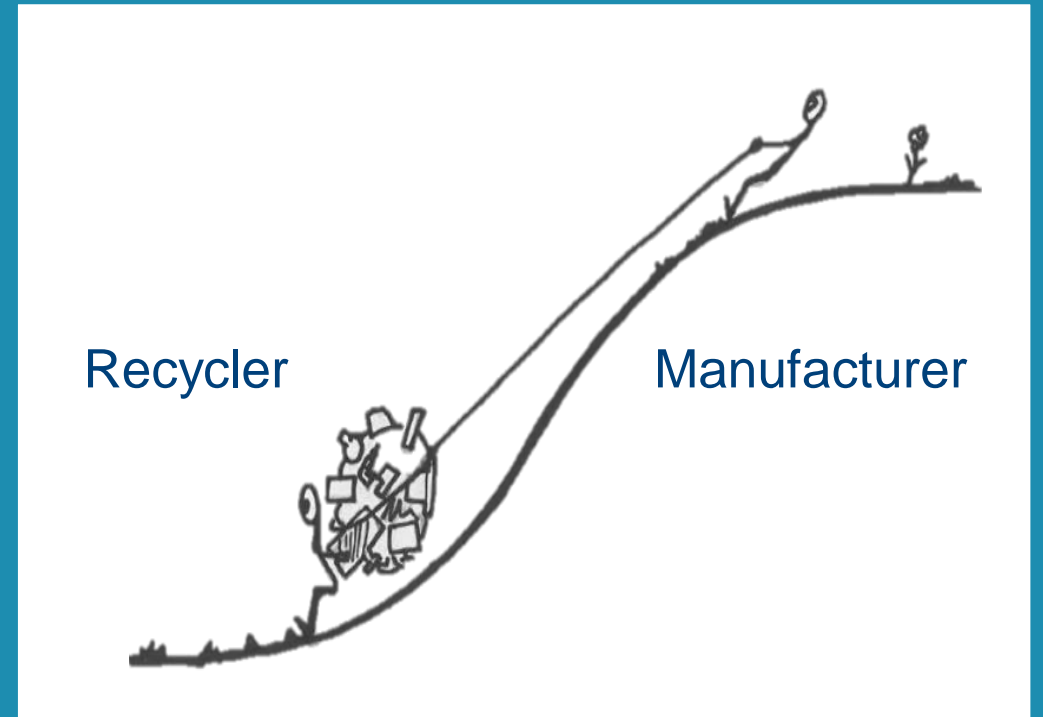


Monitoring of recycled plastics

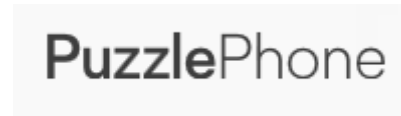


Prof. Dr. Ing. MSc. Jef Peeters
Jef.peeters@kuleuven.be



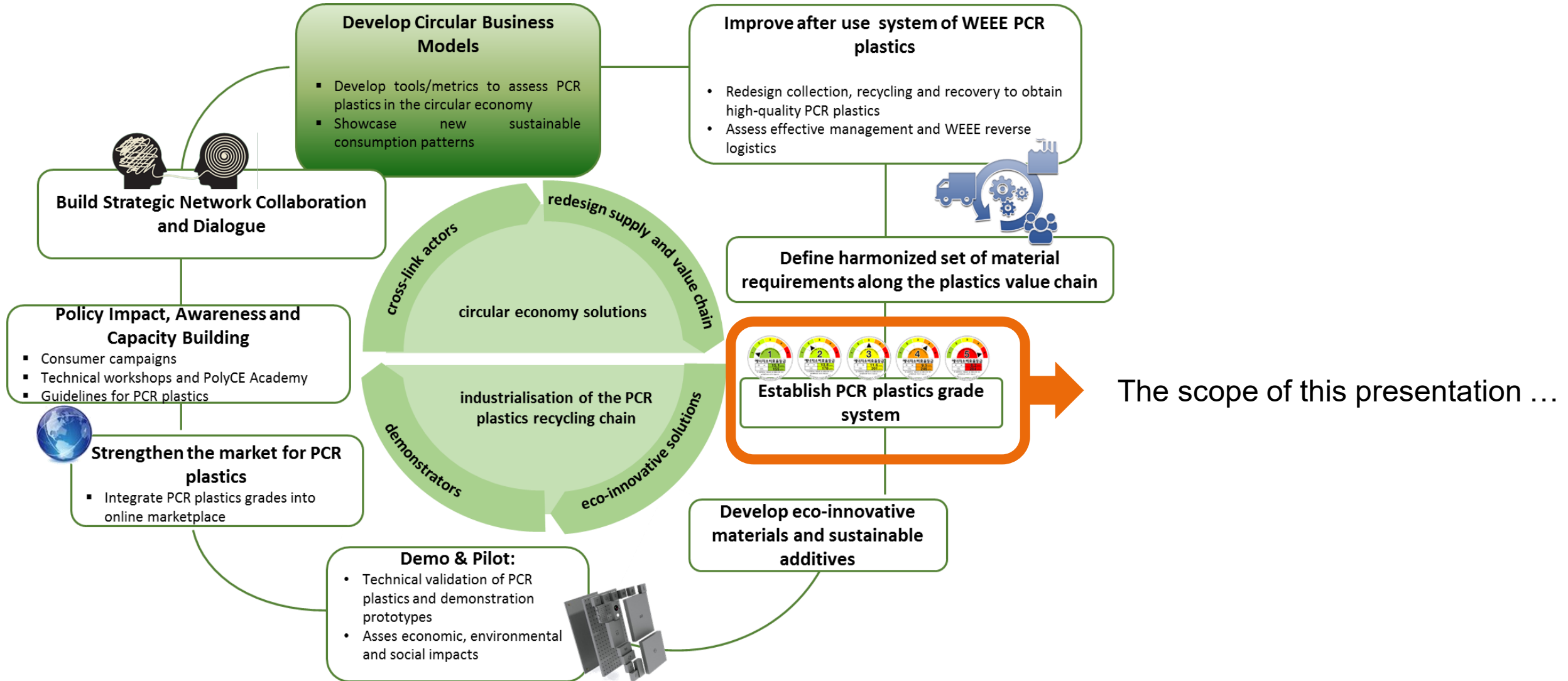
The H2020 PolyCe Project partners

20 key players with expertise covering the full lifecycle of high-tech polymers



Plastics Exchange is powered by **Kunststoff Web**

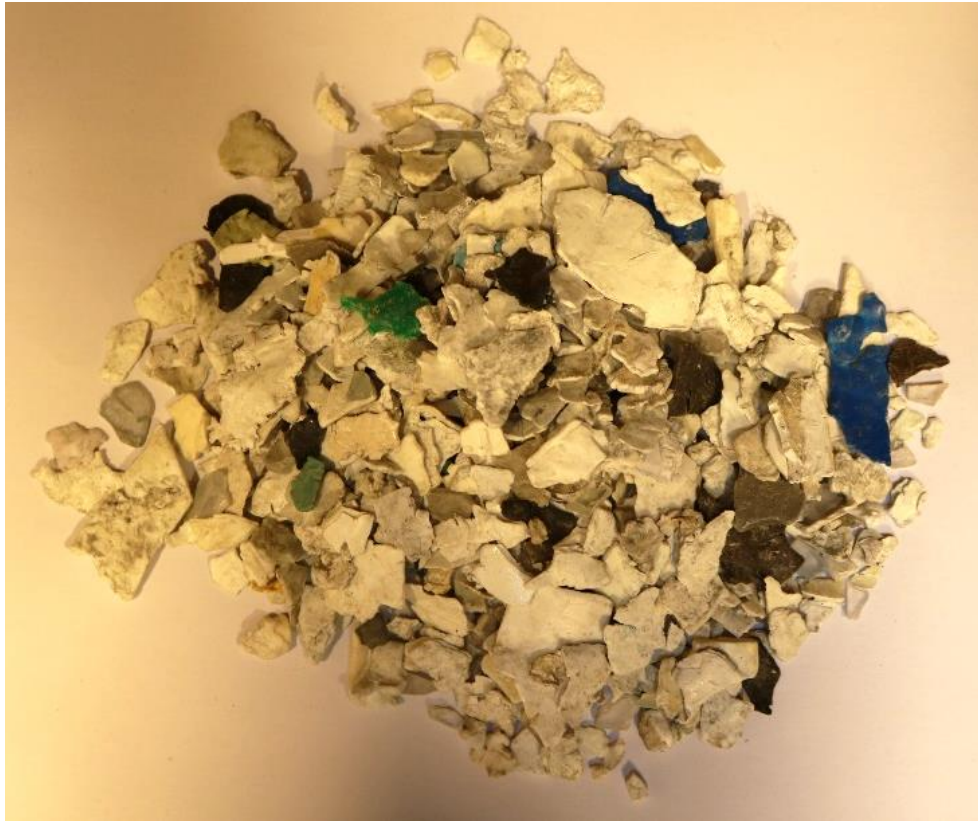
The PolyCe Objectives



What is the grade of plastics from fridges?



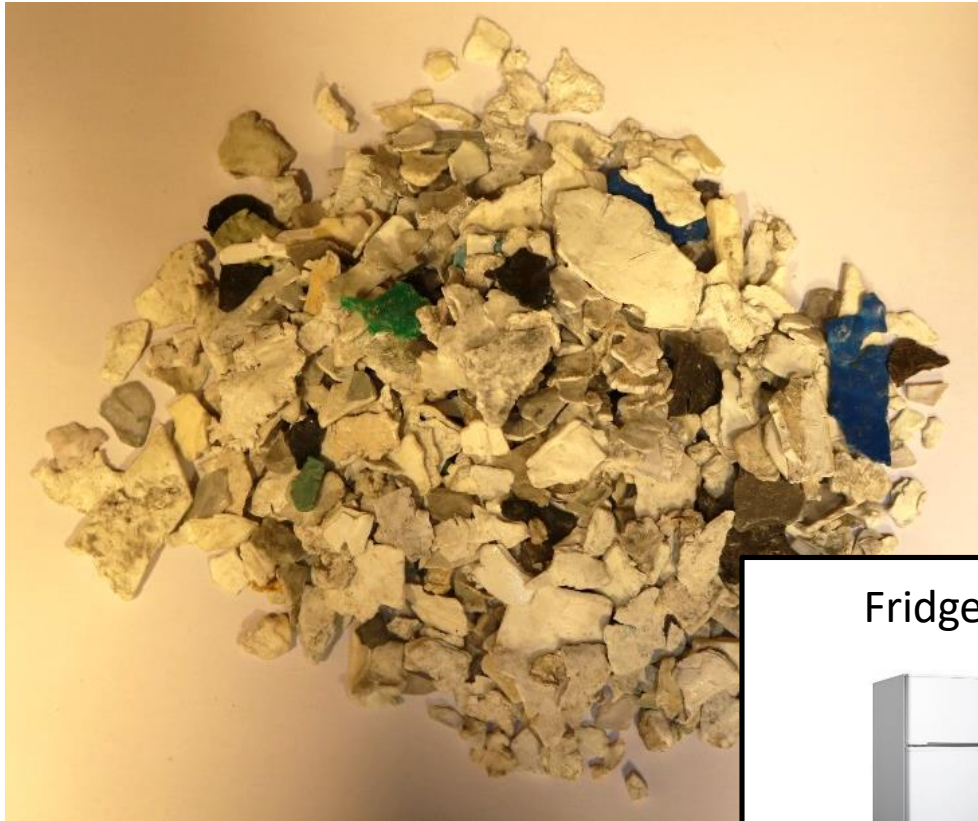
What is the plastic grade ?



V.S.



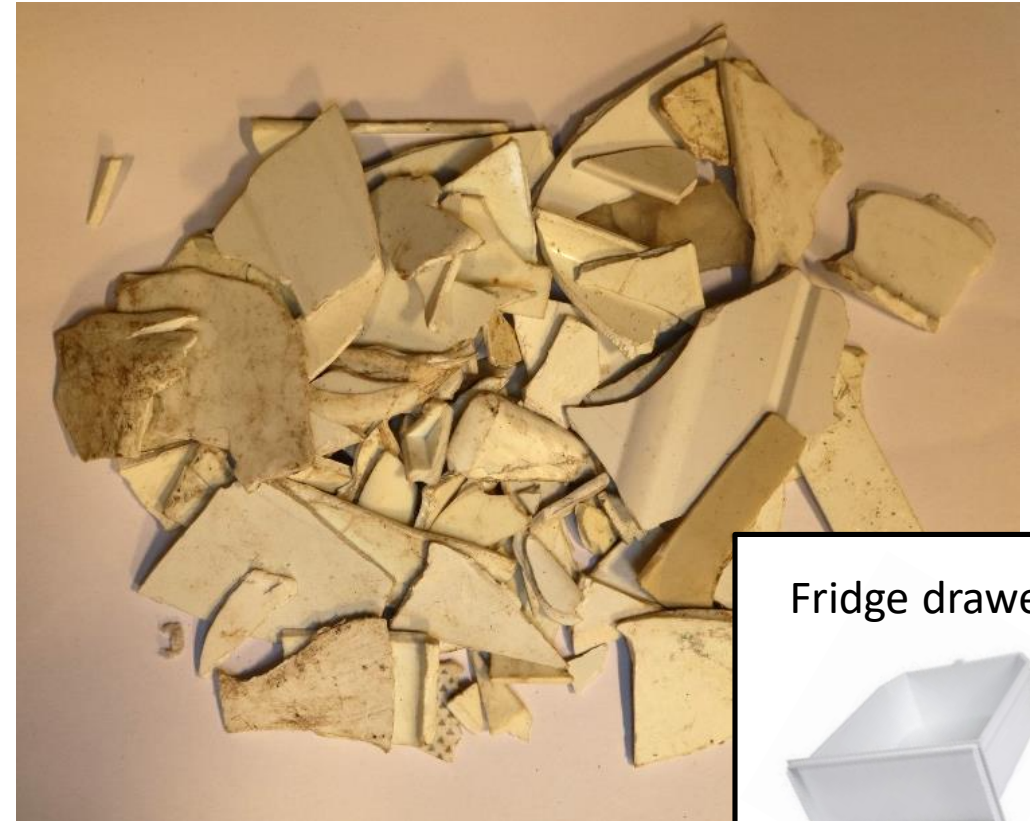
What is the grade ?



Fridges



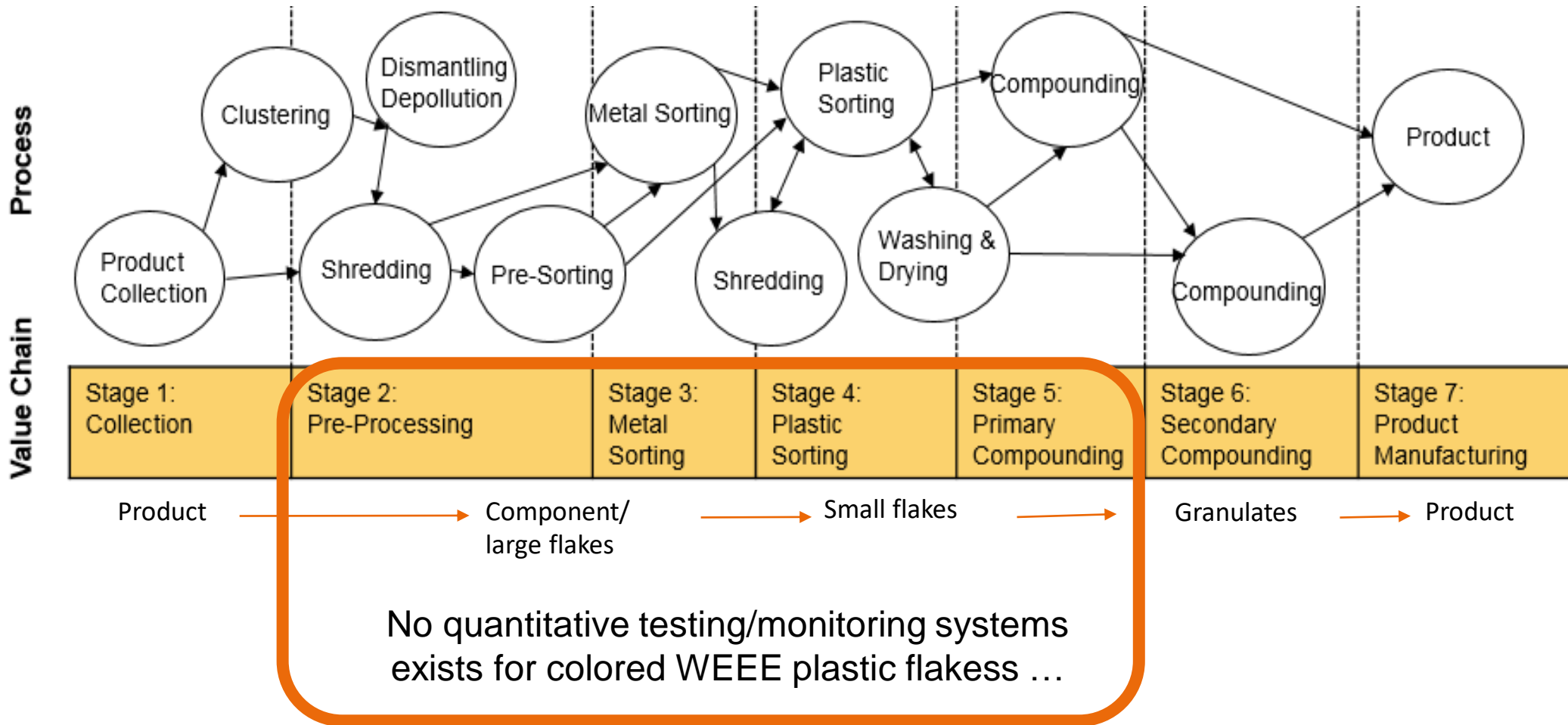
V.S.



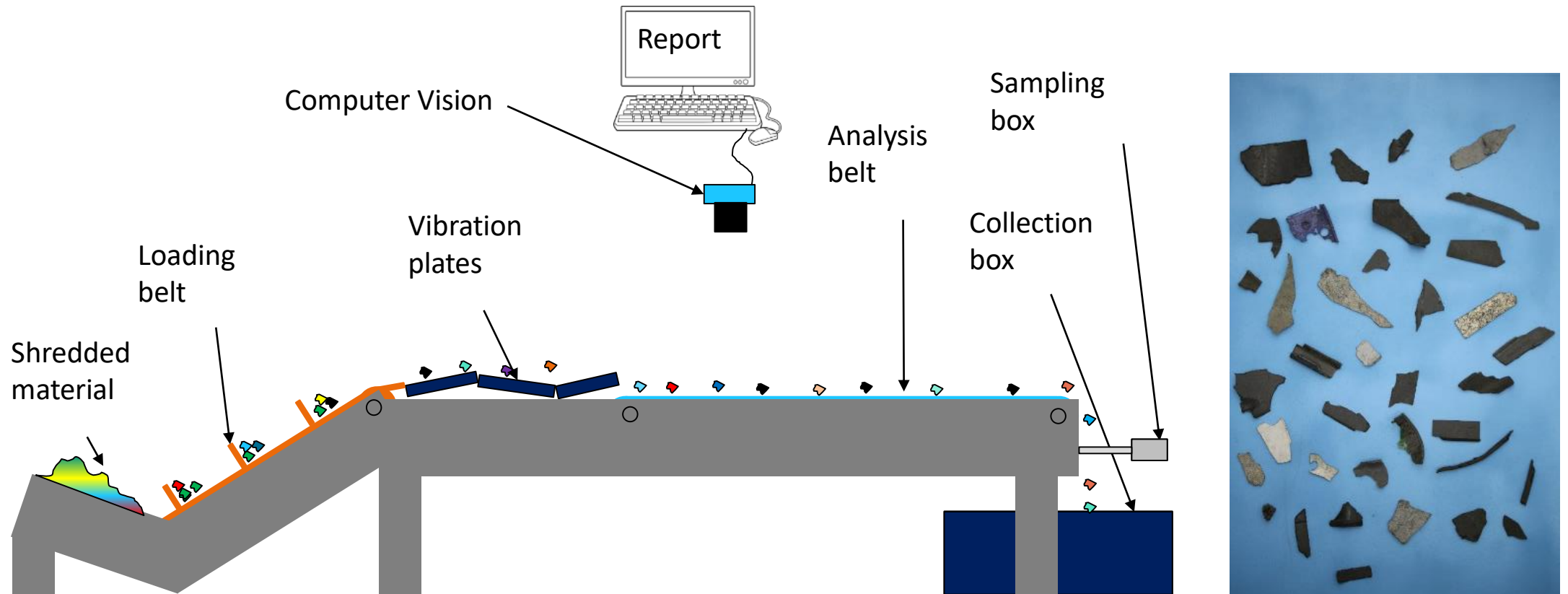
Fridge drawers

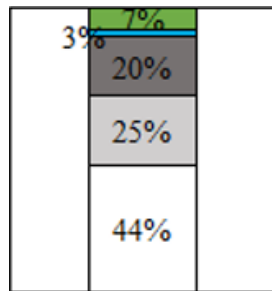
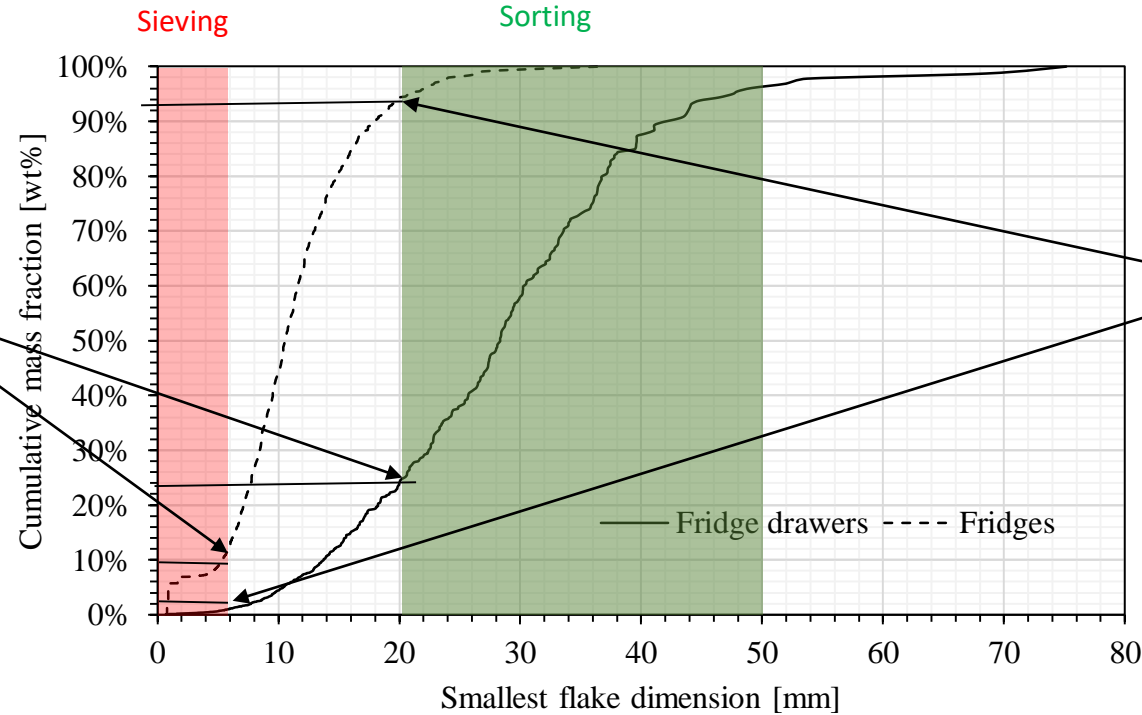


Quality management for the plastic value chain ...

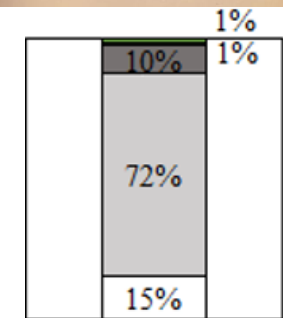


Computer vision for plastic flakes analysis



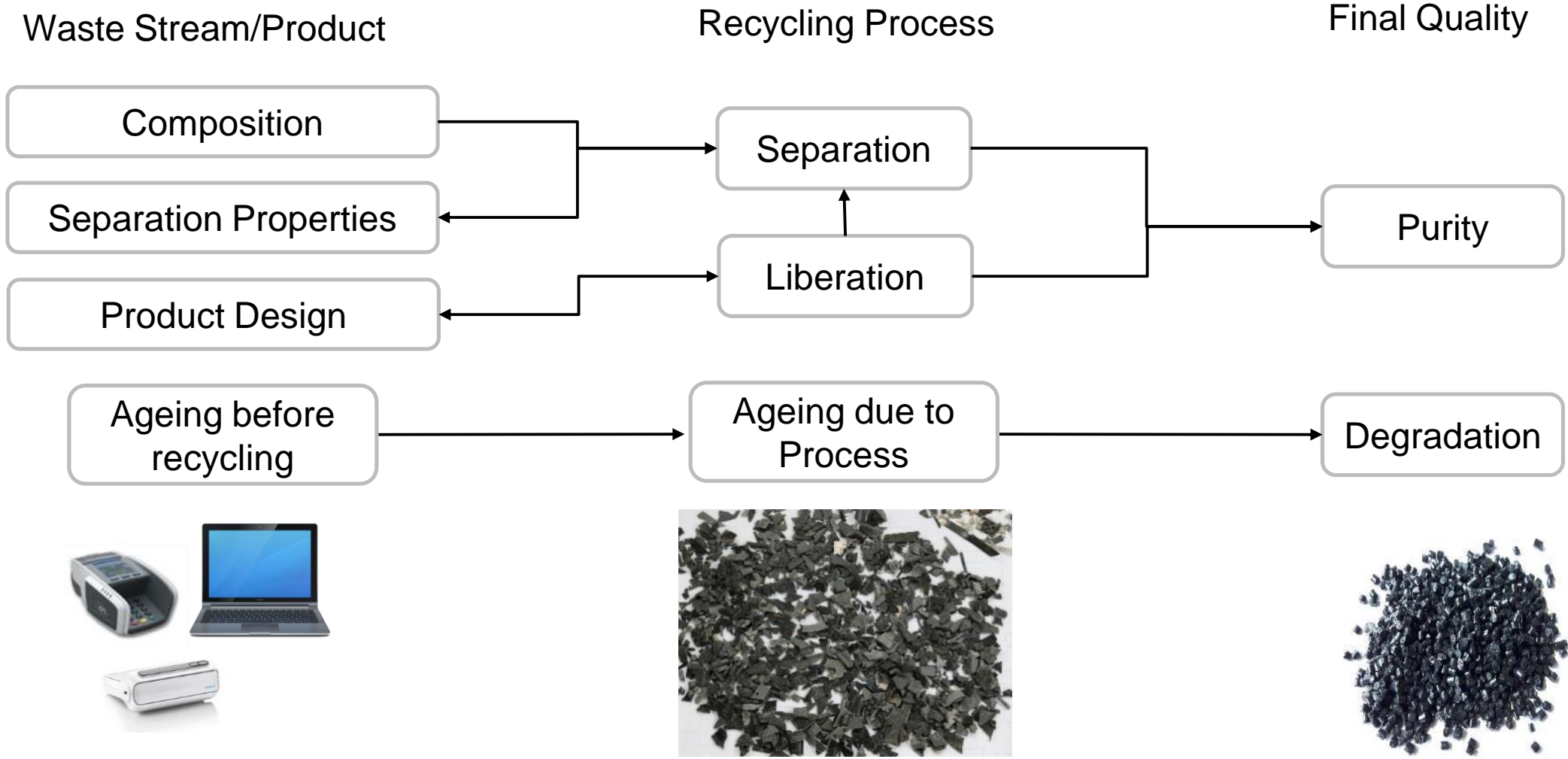


- White □ Light grey
- Dark grey ■ Black
- Blue RAL 5xxx ■ Green RAL 6xxx

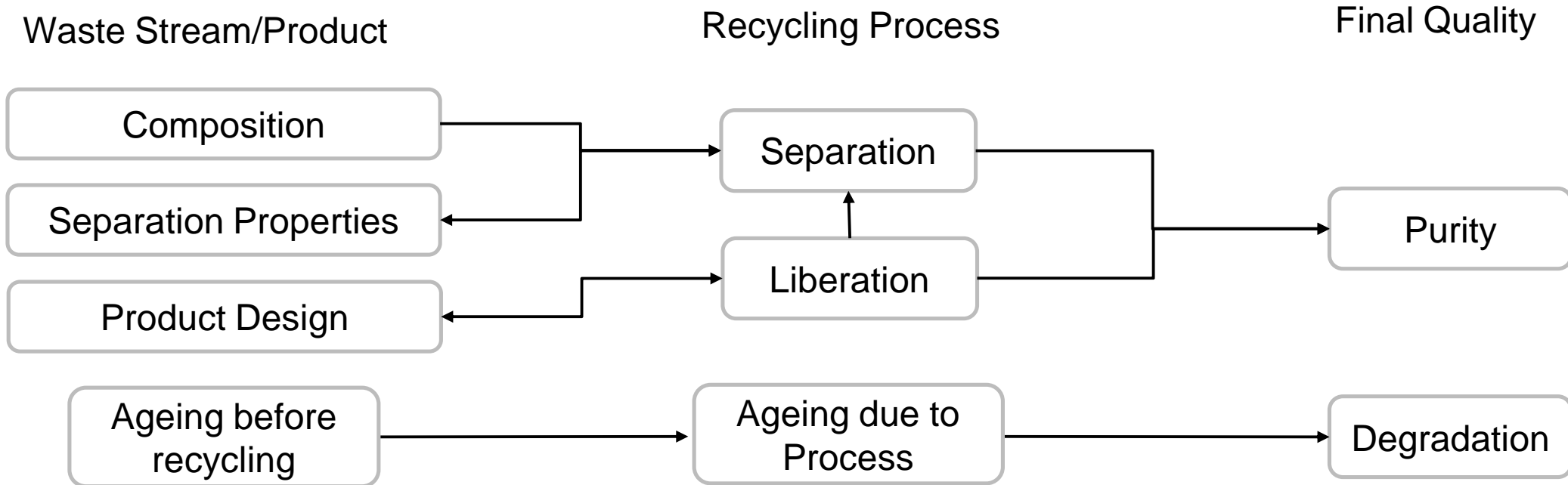


- White □ Light grey
- Dark grey ■ Black
- Blue RAL 5xxx ■ Green RAL 6xxx

Complexity of the Quality of recycled plastics



Complexity of the Quality of recycled plastics



Quality Management = Metadata + Testing



Testing scheme for plastic flakes

Computer Vision

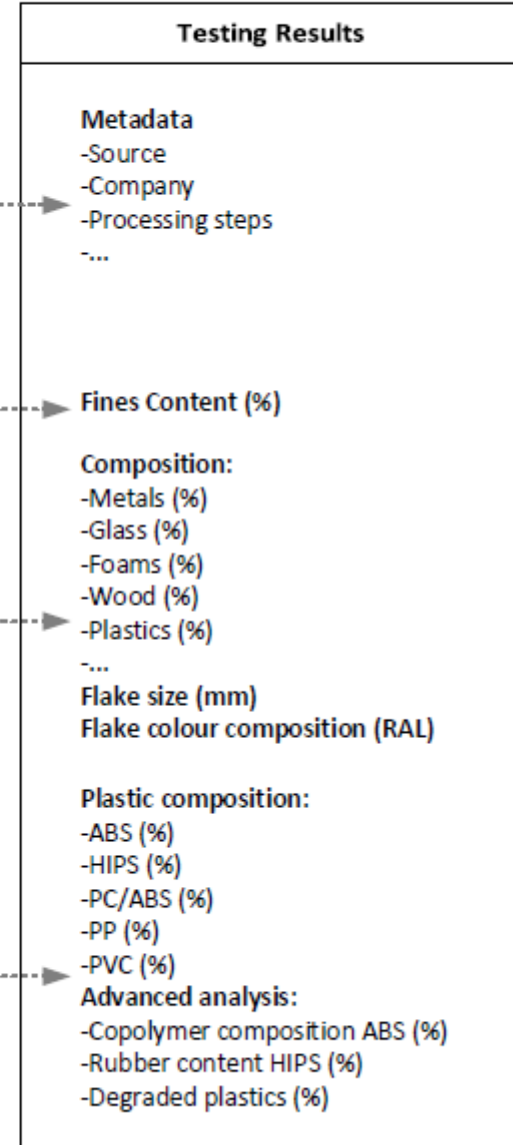
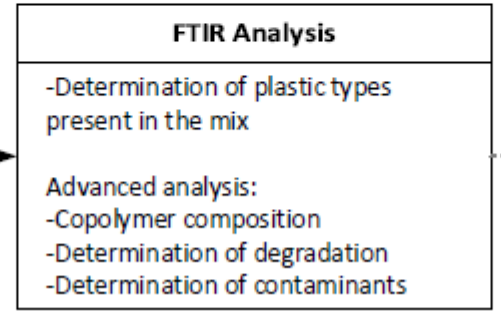
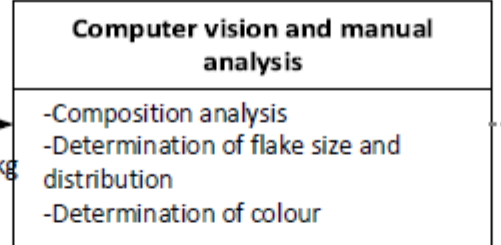
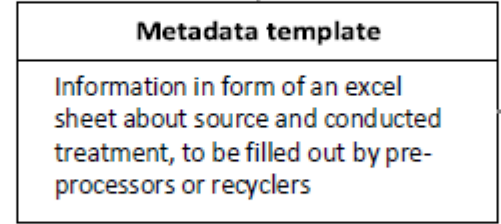
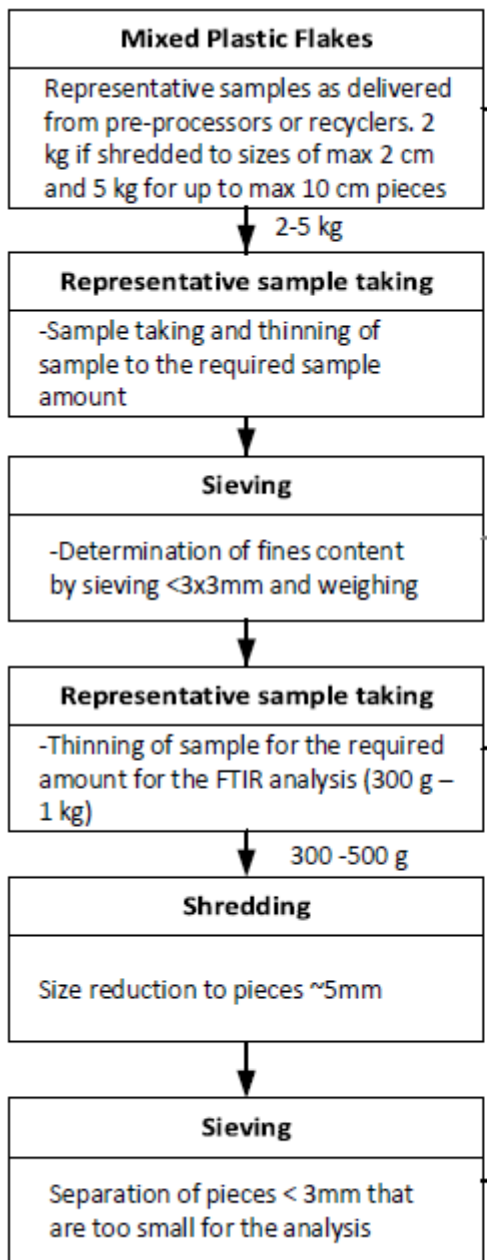
- Size Distribution
- Colour
- Contaminations

Automated FTIR

- Plastic Composition

XRF

- Metals
- Restricted substances

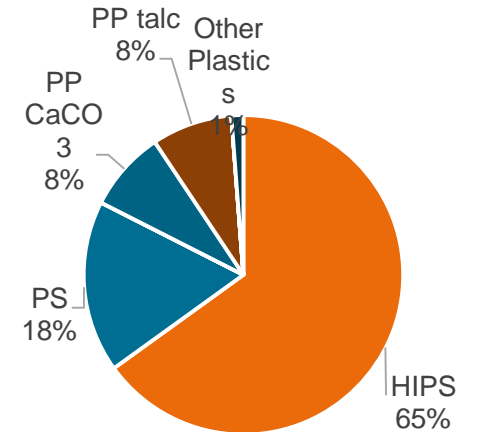
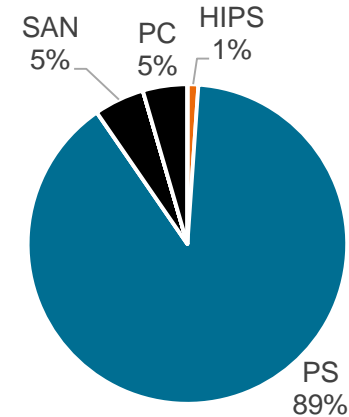
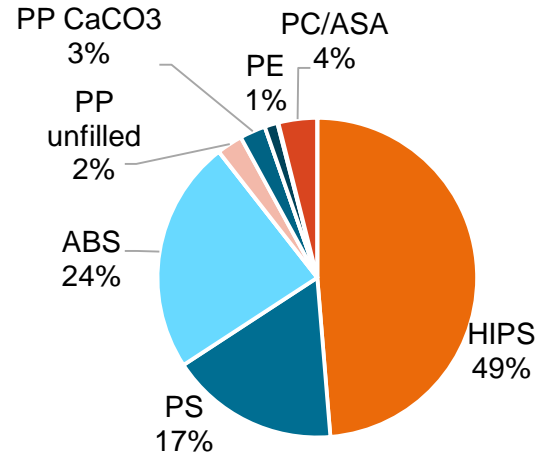


Results of composition analysis

[wt%]	Fridges	Fridges no flotation	Fridge drawers
Plastics	97.5	80.9	100.0
HIPS	47.4	41.1	1.1
PS	16.7	20.6	89.3
ABS	23.0	11.8	
SAN			5.1
PP unfilled	2.5		
PP CaCO ₃	2.5	1.5	
PP talc			
PE	1.3		
PVC	0.1	3.0	
PC			4.5
PC/ABS	3.8		
Other Plastics		3.0	
Metals	0.4	9.7	0.0
Rubber	0.1	0.0	0.0
Glass	0.1	0.6	0.0
Wood, Paper	0.1	0.1	0.0
Foam	0.0	0.0	0.0
Other	0.0	0.1	0.0
Fines <3 mm	1.9	8.5	0.0

Automated FTIR

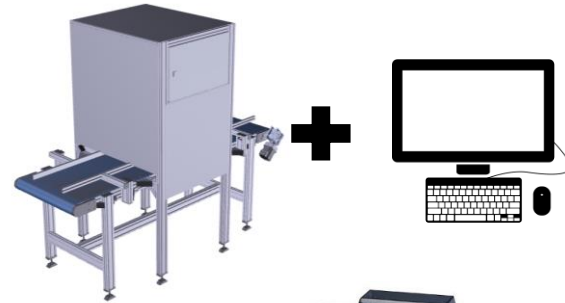
MCA



Communication of the results of the testing

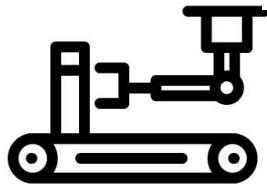
Computer Vision

- Size Distribution
- Colour
- Contaminations



Automated FTIR

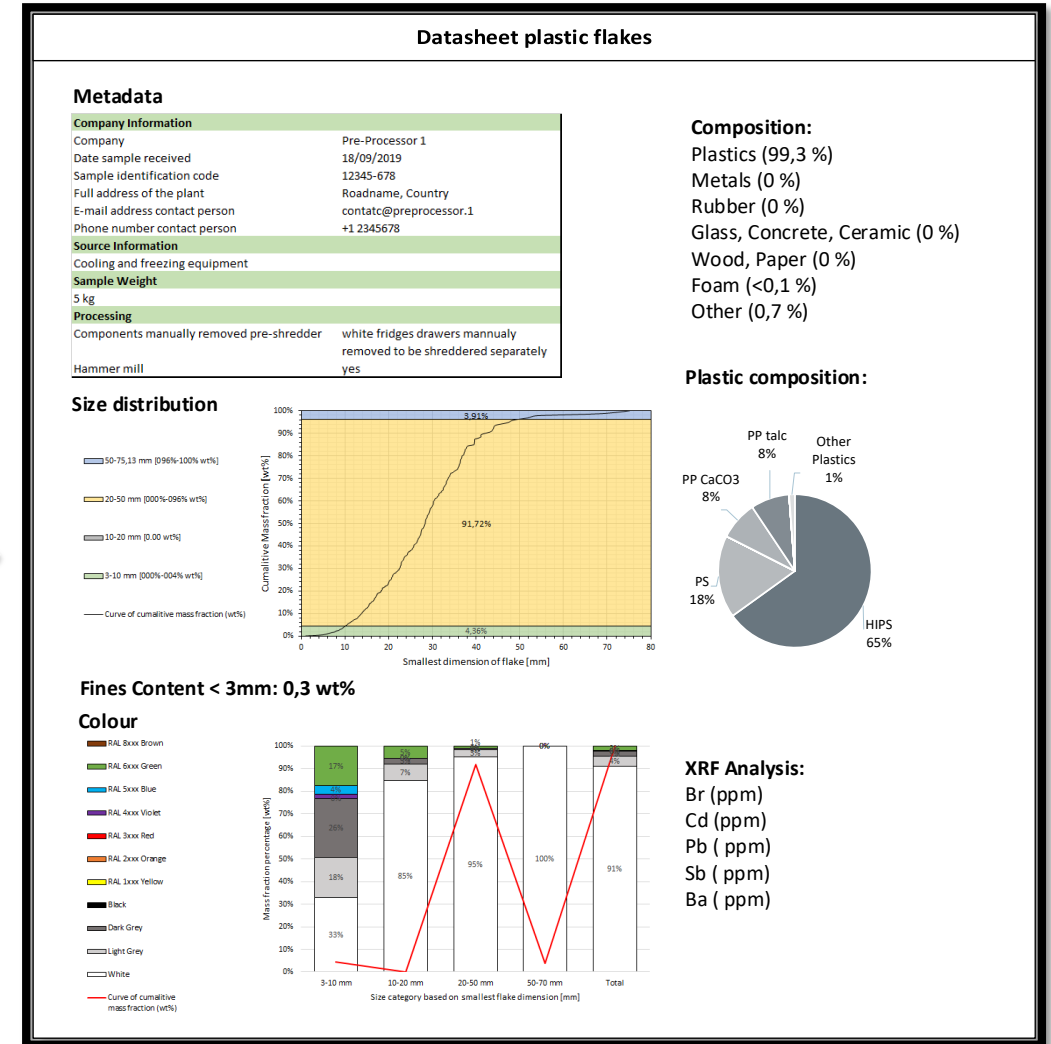
- Plastic Composition



Automated
sample
preparation

XRF

- Metals
- Restricted substances



To conclude

Influences on Quality	Probability of presence		Probability of non-detection						Severity on quality		Risk Priority		
	TV Housings	Washing Machines	FTIR	XRF	MCA(CV)	Density	MFI	GC, MS or ICP with MS	Mechanical Properties	Legal Compliance	No testing	FTIR+XRF+MCA (CV)	All techniques
-Impurities													
Metals	10	10	9	2	2	6	10	10	9	1	900	180	180
Rubber	7	8	2	10	2	6	10	6	9	1	720	144	144
Foam	7	7	2	10	2	7	10	6	8	2	800	160	160
-Additives													
Glassfibre	2	10	9	10	10	6	10	8	8	1	800	720	240
Phosphor based FRs	10	3	7	8	10	6	10	2	6	1	600	420	120
-Contaminants													
Brominated FRs	10	4	7	3	10	7	10	2	7	10	1000	300	200
-Irreversible chemical changes													
Chain scission	8	8	10	10	10	10	6	10	8	2	720	720	432

⇒ A method for the quality assessment of mixed plastic flakes is proposed between pre-processors and recyclers, which is often subject to trade.

⇒ The material composition and the size and colour distribution can be analysed.

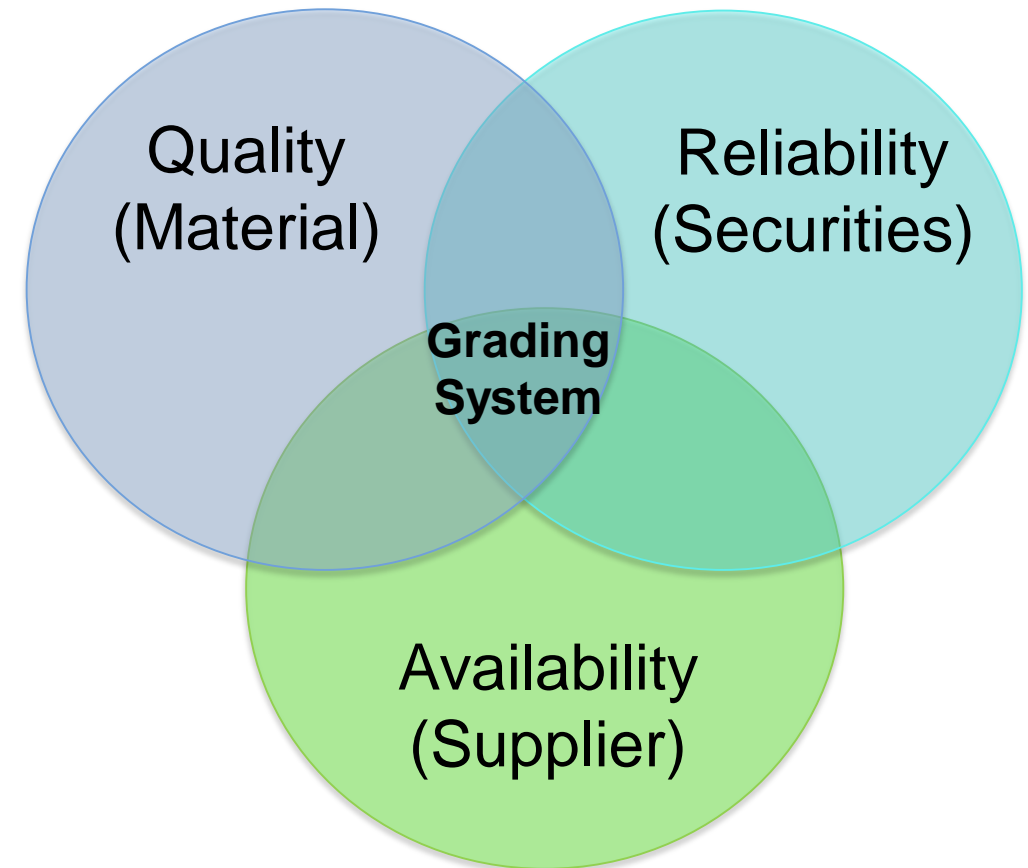
⇒ FMEA allows to determine quality risks for recycled plastics.

⇒ The importance of source information to control restricted substances is highlighted.

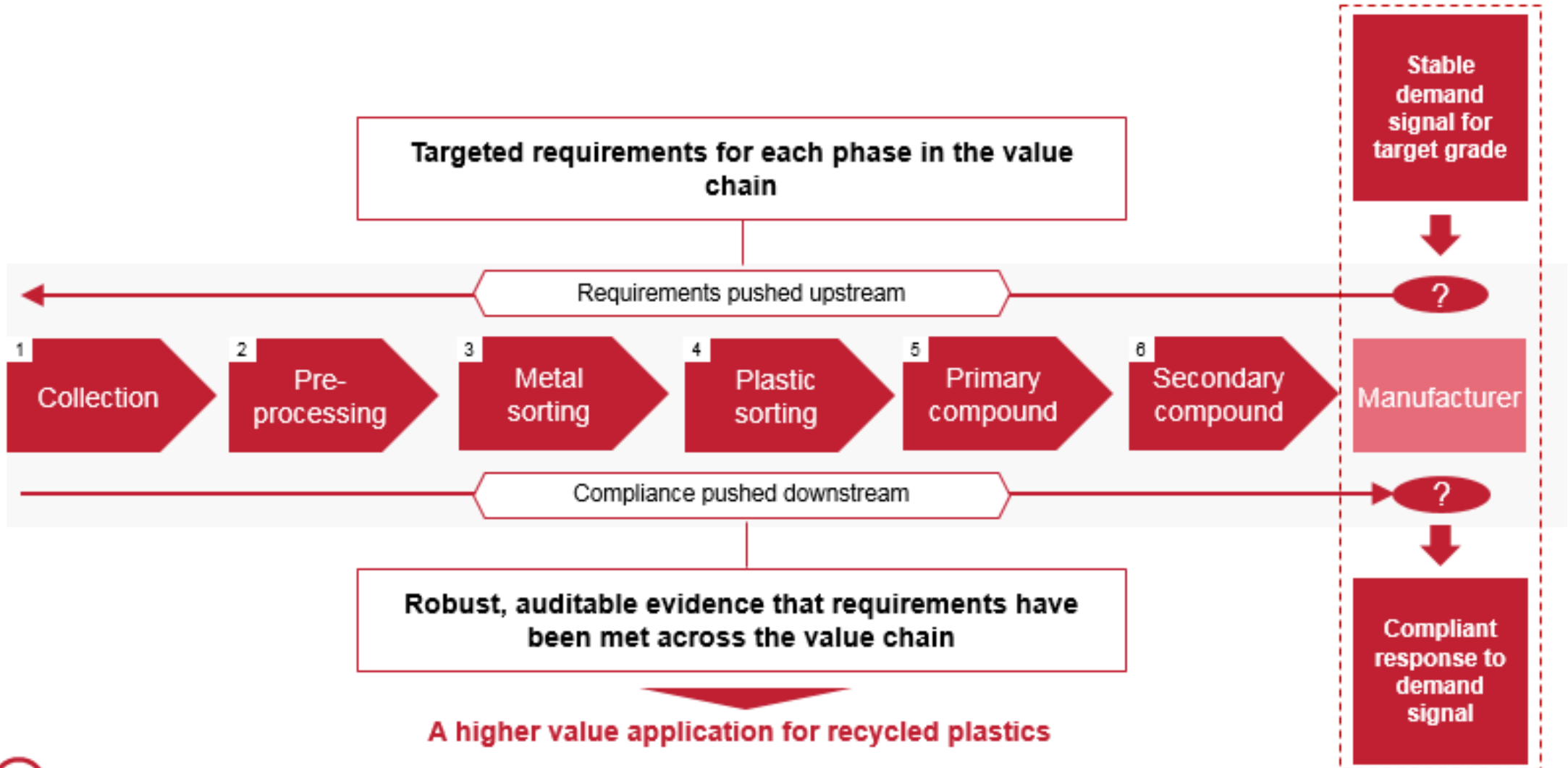
⇒ Automation is required to allow cost-efficient and systematic input testing. (from 322 to 45 € per tonne, which is considered an acceptable)

Defining the plastic grade ?

- Reduce mistrust between actors in the value chain
- Increase data transparency
- Support trade and sales of PCR plastics
- Integration in an the Kunststofweb online platform



Integration of testing procedures in Phase-Gate approach as a quality management system for the plastics recycling value chain



Beyond the PolyCe project ?

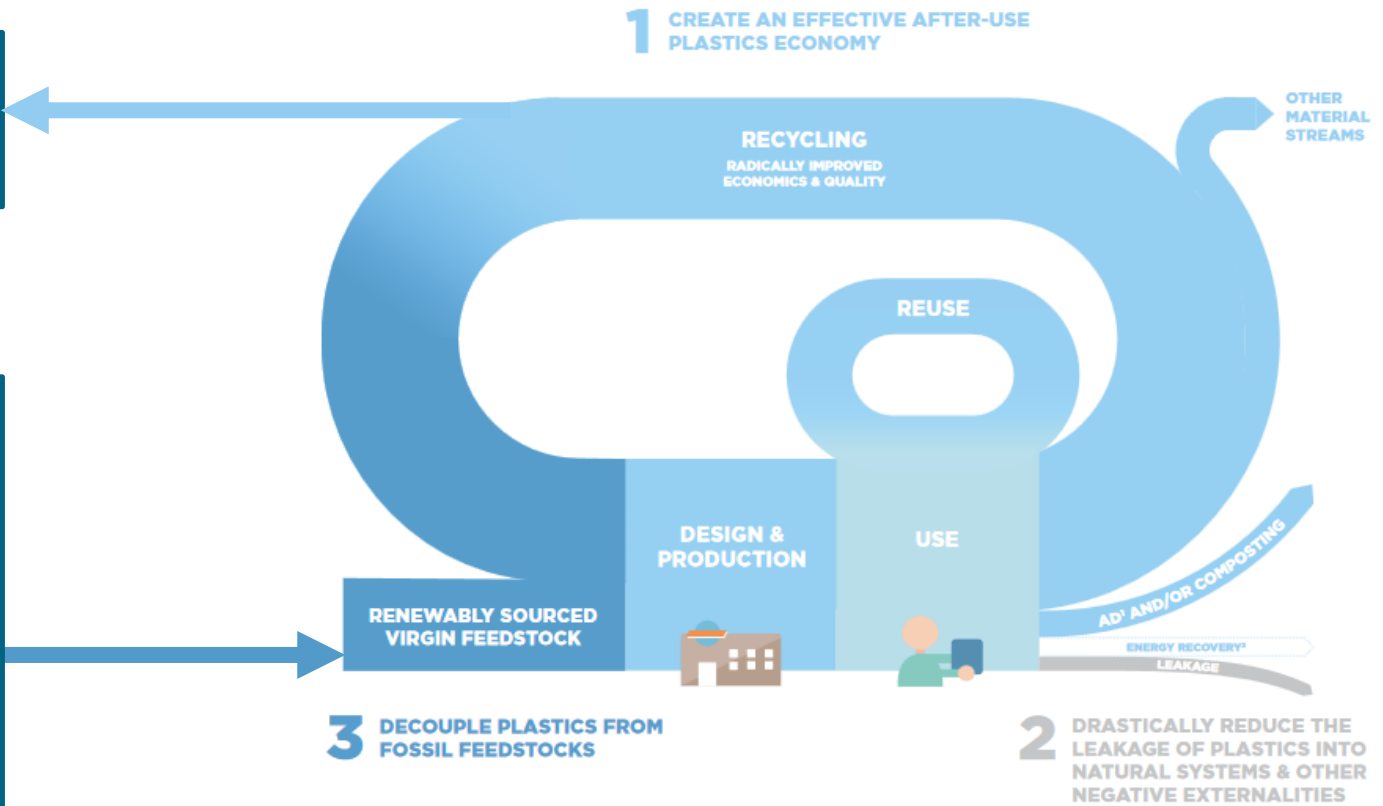
The production of high quality plastics with constant quality specification and volumes requires the collaboration of the entire value chain

Systematic quality testing and management in a Phase-Gate approach



Compensation of losses and quality flaws based on available information:

- Special engineered buffer material
- Upcycling strategies
- Virgin feedstock
- Chemical/dissolution based recycling

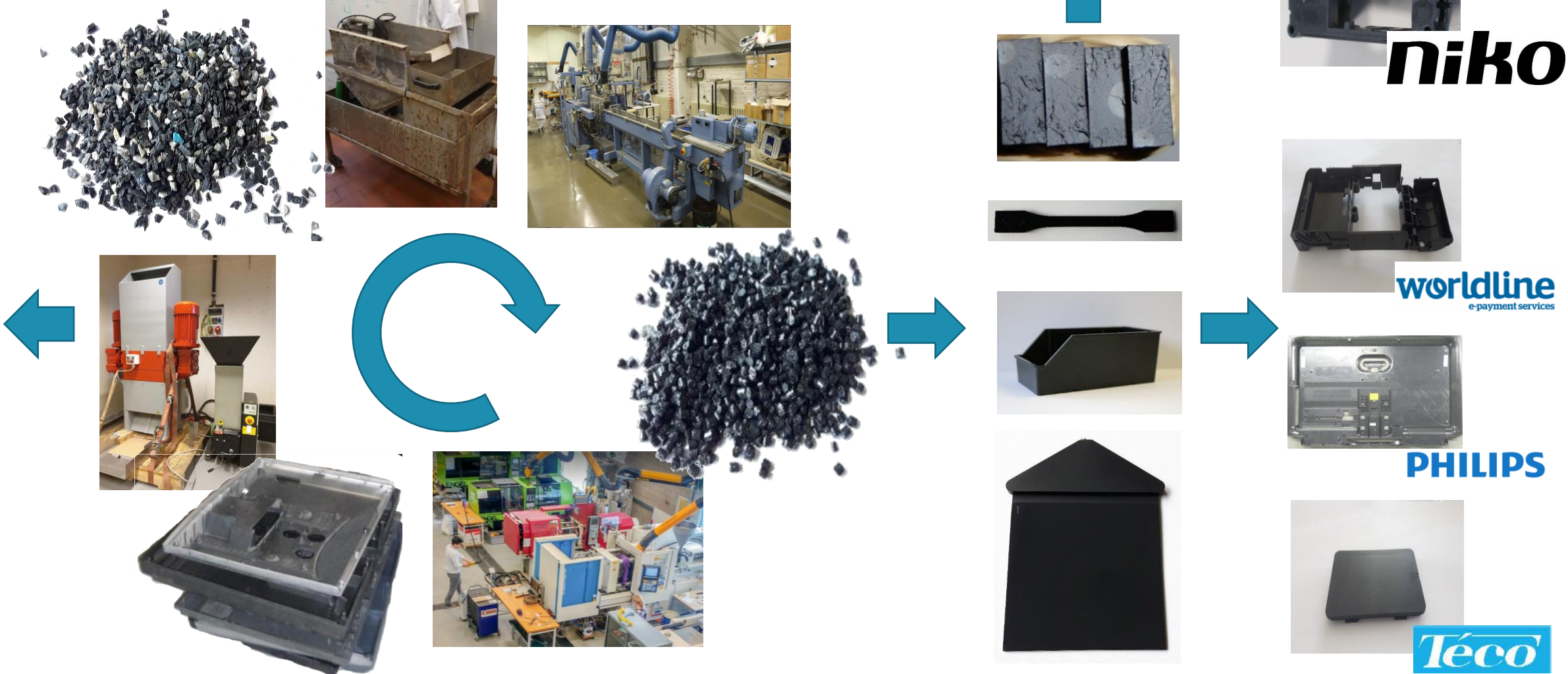


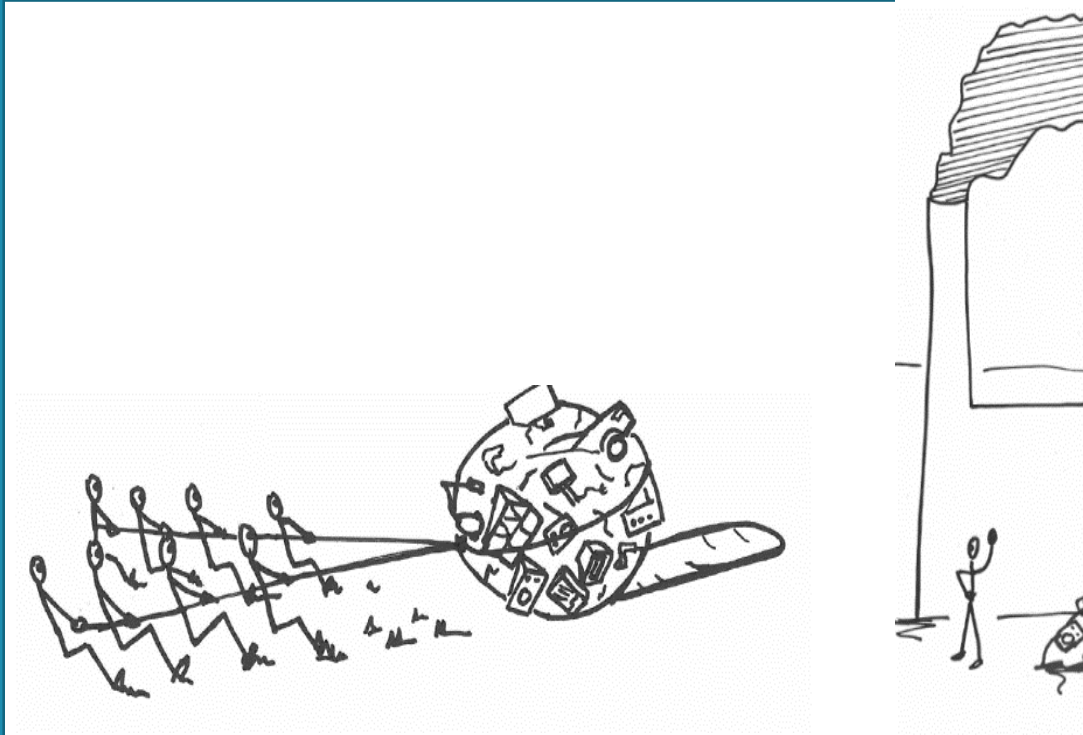
Ellen Macarthur Foundation

KU Leuven & plastic recycling

Characterization

Testing





Questions?

Dr. Ing. MSc. Jef Peeters

Jef.peeters@kuleuven.be

Department of Mechanical Engineering

Faculty of Engineering Science & Technology

KU Leuven – University of Leuven

Celestijnenlaan 300 bus 2420

3001 Leuven-Heverlee

tel. + 32 16 32 25 69 - Mob. +32 474 78 13 48