



HAUT-GIFFRE
tourisme

PRESS RELEASE

SUMMER 2022

HAUT-GIFFRE.FR

SIXT-FER-À-CHEVAL / MORILLON / VERCHAIX / LA RIVIÈRE-ENVERSE / CHÂTILLON SUR CLUSES



Located between Mont Blanc and Lake Geneva, the Haut-Giffre valley is a jewel of unspoiled natural beauty, a far cry from mass tourism and close to the people who bring the region to life every day. It's a living, breathing valley.

From Sixt-Fer-à-Cheval to Châtillon sur Cluses, the Haut-Giffre Tourisme destination is made up of five villages, each with its own personality, from traditional mountain charm to the heart of the resort, it's a peaceful destination with an enduring connection with nature.

This is where summer can be found in the air, on earth and in water. Where you can retreat to the wide open spaces of the Sixt-Fer-à-Cheval/Passy nature reserve and where well-being is ever present, whether you're deep in the forest, walking along the Giffre river, by the 50 waterfalls in the Cirque du Fer-à-Cheval or practising yoga by Lac Bleu in Morillon.

One day you could be hiking in the mountains, the next, taming the meanders of the Giffre river before soaring over the valley in a paraglider, like a trainee bearded vulture. That's what we call summer in Haut-Giffre. Tradition and modernity combine, as you taste potato fritters in front of the Reine des Alpes waterfall or hurtle down the slopes of the Grand Massif on a mountain bike.

With its many different landscapes, it's a valley like no other. From the calm of the rural pasture lands up to the high mountains, there's something for everyone here. A destination where the river sets the pace, whether you're getting away from all the stresses of daily life or exploring the valley at your own pace, embracing soft mobility on foot, on horseback or on a bicycle, with 650 km of paths marked from 600 m altitude.

The Villages



SIXT-FER-À-CHEVAL, A VILLAGE WITH 24 HAMLETS

Member of the Grands Sites de France network in the heart of the biggest nature reserve in Haute-Savoie, Sixt-Fer-à-Cheval is well known for its famous cirque and for being the birthplace of mountaineering.

It was right here, in 1770, that the first ever high-mountain climb in the Alps took place: Mont Buet, also known as Mont-Blanc des Dames.

A village with 24 hamlets, Sixt-Fer-à-Cheval isn't the type of place where you just pass through, it's a place where you stop. With 85% of the area classed as protected, its natural environment is unspoilt, with exceptional wildlife, breathtaking peaks as far as the eye can see, majestic waterfalls and lush forests. The *Sizerets* (Sixt-Fer-à-Cheval residents) have preserved their authentic, natural heritage.

MORILLON, A VILLAGE RESORT

Historic village resort, Morillon is easily accessible, being only 1 hour by road from Geneva airport and Annecy TGV railway station, 15 km from Cluses (TGV railway and shuttle buses); 20 mins from the A40 motorway.

At an altitude of 700 m, the village centre consists of wooden chalets and charming traditional farmhouses. The Lac Bleu leisure park provides numerous activities in a playground for young and

old.

The Les Esserts resort at 1,100 m altitude offers a sporty side to the mountain village, with access to the Grand Massif domain, where mountain bikes and fat tyre scooters hurtle down the slopes that are now mountain pastures for ever more thrills.

Morillon brings you the classic Alpine joys of descent, pedalling, climbing and exploring. We just love it!

VERCHAIX, THE SUNNY HILLSIDE

Here, the 'Lhottis' are proud of their home town. Verchaix is an authentic, quiet little village arranged over two levels, with many secrets for you to explore.

Separated from Morillon by the Giffre river, this gem of a village, known for its south-facing hillsides, changes

with the seasons to reveal its hidden treasures, such as the Joux Plane pass with breathtaking views of Mont Blanc, or the Loëx plateau where you might see the black grouse, which is the emblematic bird of these mountains.

LA RIVIÈRE-ENVERSE, A TRADITIONAL SOUL

With its baroque church featuring a roof with tin-plate cladding on its clock tower, the cave and the many shrines such as the chapel of Nicodex, discover

La Rivière-Enverse on a walk through the abundant natural landscape where artists and artisans make up the majority of its residents.

CHÂTILLON SUR CLUSES, GATEWAY TO THE HAUT-GIFFRE

A rural village with 1,169 inhabitants, set between two valleys (the Arve valley to the south and the Giffre valley to the north), Châtillon-sur-Cluses, like

all "Châtillon" place names in France, owes its name to the château here that was once the favoured residence of the Lords of Faucigny.

HAUT-GIFFRE HIGHLIGHTS

A NIGHT IN A PORTALEDDGE

Spending the night in a portaledge is an unforgettable experience, suspended 90 m above the ground! After an easy, ten-minute walk starting from Les Tines in Sixt-Fer-à-Cheval, you'll climb the Les Tines Rock and bed down for a thrilling night hanging on the cliff side.

Only the sound of the Giffre river flowing way down below could disturb your unusual night under the cliffs.

From €350 per person

François Coffy

+33 (0)6 14 61 60 71

escalade-montagne.com (in French)



HIKING IN NATURAL SURROUNDINGS

Starting from the Cirque du Fer-à-Cheval, at the source of the Giffre river, you'll follow the course of the river, observing how its characteristics change and experiencing the valley from the river's perspective. You'll feel the vibrant flow of the water and be swept along in the cycle of nature.

Bonus: extend your walk by staying overnight in a bivouac under the stars beside the river, in the Cirque du Fer-à-Cheval

From €35

Ages 12 and up

Agnieszka Warszawska

en.alps-immersion.com



RIVER FISHING

The Giffre river is a natural, unspoiled ecosystem that flows through the valley. It's also one of the largest category 1 mountain fishing spots. This is a place for fly-fishing, catch and release and line fishing, for sport or recreation. The Haut-Giffre fishing society (Société de Pêche du Haut-Giffre) regulates the activity and has 500 members on its books, from young enthusiasts to seasoned professionals such as Grégoire Juglaret, the fishing world champion, who comes to Haut-Giffre on a regular basis. Improvement courses are available for enthusiasts throughout the summer and a two-day fly fishing competition is due to take place in August (dates to be confirmed)

Société de Pêche du Haut-Giffre

Jean-Pol Gosset

+33 (0)6 18 07 85 40

TUBING

Go on an adventure with family or friends on the Giffre! Glide peacefully along the Giffre river in the comfort of a big blue rubber ring. Or perhaps not so peacefully!

Top tip: enjoy sunset drinks by the water's edge at the finish.

From €40

Ages 12 and up

Yaute Rafting Adventure

rafting-aventure74.com/home.html

EXTRAORDINARY NIGHTS UNDER THE STARS

A STARRY NIGHT IN A GEODESIC DOME AT AN ALTITUDE OF 1,950 M

Head for the Grenaïron mountain refuge, a 3-hour walk from Sixt-Fer-à-Cheval. After an ascent of 1,200 m, take shelter for a night under the stars in a geodesic dome. When you wake up, you'll be treated to a breathtaking sunrise over Mont Blanc and the Rocher des Fiz.

€70 per person per night, maximum 2 people.
Dinner, breakfast and shower included

Refuge du Grenaïron, Sixt-Fer-à-Cheval
grenaïron.com (in French)



AN EXCURSION TO THE LAC D'ANTERNE WITH A DELIGHTFUL COMPANION

Starting from the hamlet of Salvagny, you'll have a pack donkey by your side throughout the walk to the Lac d'Anterne at 2,063 m altitude. The donkey is the ideal companion, lightening the load and motivating the group along the two-day hike. Perfect for families.

Donkey hire €80 per day including equipment.
Option to hire bivouac equipment.
Option to book a refuge for an overnight stay or for several days.

Les Ânes du Haut-Giffre
anesduhautgiffre.com (in French)



SUMMER IN A MOUNTAIN REFUGE

The Haut-Giffre area features 10 mountain refuges, all available daily from mid-June. Enjoy a gourmet meal or a night at altitude. Everyone can experience the joy of the mountains.



THE REFUGE DES FONTS: KEEPING IT IN THE FAMILY FOR OVER 95 YEARS.

In the heart of the second cirque at Sixt-Fer-à-Cheval, the Cirque des Fonts, you'll find the oldest refuge in the valley, the Refuge des Fonts, built at the end of the 1890s by Marie Mogenier, who died in 1928. The refuge is part of a small settlement of around forty chalets, one of which is a former fruit farm, as the land at Cirque des Fonts used to provide pasture.

Since 1926, the refuge has been passed down through the Mogenier family from father to son and grandmother to grandson. Since 2012, the refuge has been managed by Nathalie and Benoit Bouvet and their two children, who wanted to keep the family tradition alive.



FROM REFUGE TO REFUGE: A WANDER THROUGH HAUT-GIFFRE

You can explore over a 7-day period. Seven days away from it all, only coming back down to the valley at the end of your journey. It's up to you, the hiker, to choose your route and the refuges you want to stay in while exploring the many different landscapes in Haut-Giffre.

A favourite for summer 2022: try the refuge at La Vogelle and the lake with the same name for a hike across the Cirque du Fer-À-Cheval, where you'll hear seracs (glacial ice blocks) falling at night, then take a trip to La Combe à L'Ours, heading towards the Lac des Chambres near Samoëns and the Folly refuge.



SHELTER: CHÂTEAU PICTET

This makeshift shelter shows on IGN (National Institute of Geographic and Forest Information) maps with the name "Château Pictet". Two or three people can spend the night in a bivouac. There's not enough room to stand up and hikers will need to find their own comfort! It was built by Auguste Pictet (1752-1825) at an altitude of 3,040 m on the Fonts ridge on the ascent to Mont Buet (3,099 m).

Château Pictet in 1910, on the cover of the book entitled «Les refuges du Haut-Giffre», published by the Amis des Refuges du Haut-Giffre (Friends of the Haut-Giffre mountain refuges).



BE AT ONE WITH THE ELEMENTS

AIR: PARAMOTOR FLIGHTS

Glide over the Haut-Giffre region in a paramotor, a paraglider powered by a motor and propeller so you can enjoy your flight for longer without the need to catch the thermals.

After taking off from the Morillon plains, you can explore the peaks around the valley for over an hour, including Bourgeoise au Criou or even the Cirque du Fer-À-Cheval and the more distant Mont Blanc.

Price: €250 for a 1-hour flight

Profeel Parapente in Morillon
parapente-morillon.com (in French)

EARTH: IN THE FOOTSTEPS OF CHAMOIS AND IBEX

Starting at the Lignon chalets in Sixt-Fer-à-Cheval, you'll set off on an epic day trip. With your bag packed with a picnic lunch and water bottles filled to the brim, prepare to be amazed by the sights that await you.

The path follows the water course, the Torrent de Sales, feeding into the most stunning waterfalls in Haut-Giffre, including Le Rouget, La Pleureuse, La Sauffaz, Trainant and Sales, and you'll be surrounded by nature, which reigns supreme in the region.

This adventure isn't all about water, though. The aim is to track down the rulers of the mountain, the chamois and ibex, who calmly enjoy the sweet summer air of the Sales Valley.

The hike ends at the gateway of the Désert du Platé plateau, at Les Laouchets lake, a wild and secret place capturing the spirit of Haut-Giffre.

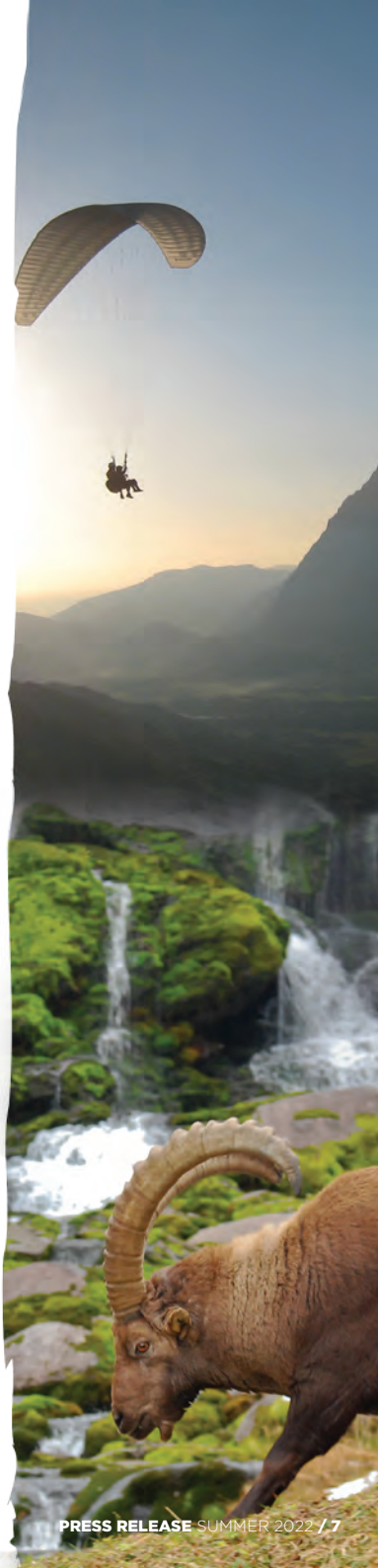
Bonus: Local mountain guide Mathias Mercier will introduce hikers to some of the natural edible treats found in the region.

From €45 per person, 10 years and up

Mathias Mercier, mountain guide
en.rando-observation.com

WATER: SEE NEXT PAGE

FIRE: SURVIVAL, WE ALL KNOW ABOUT THAT



RIVER ACTIVITIES

The Giffre river is the artery of the valley. Its source can be found at the legendary “Bout du Monde” (end of the world) and at the Cirque des Fonts in Sixt-Fer-à-Cheval, fed by waterfalls taking their source from underground rivers or melting ice above the Cirque du Fer-à-Cheval. The Giffre is powerful and vibrant, the ideal playground for whitewater sports enthusiasts, offering diverse activities while shaping the valley landscapes.

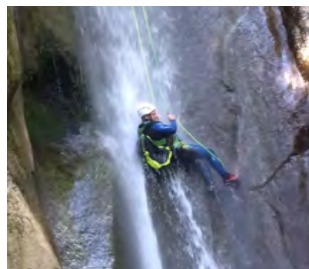
FAMILY CANYONING

In a land of waterfalls, white water reigns supreme! Explore the natural flow by travelling down the course of the river, facing fears and surpassing yourself, sharing special moments with the family in the magical and unique setting of Sixt-Fer-à-Cheval.

Unique: combine this activity with an introduction to natural survival skills.

From €45 per person, based on 2 adults and 2 children.

Latitude Canyon
latitudecanyon.fr (in French)



RAFTING FOR ALL

Whether you're a beginner or a passionate rafter, you'll find a rafting experience to make the most of the river. Altitude Rafting offers various options: Classic rafting trip from Sixt-Fer-à-Cheval to Samoëns: 7 km course for ages 6 and up (participants must be able to swim), available pre-season only, a full rafting experience from Sixt-Fer-à-Cheval to Verchaix. 11 km course or extreme rafting, passing twice through the gorges (photo).

Original: a raft-canoe for two. Somewhere between a canoe and a raft, set off down the Giffre with your guide in a separate craft. Exhilaration guaranteed!

From €35 per person

Altitude Rafting
<https://eco-rafting.com/index.en.htm>



O VIVE FESTIVAL

THE FIRST EVER WHITEWATER FESTIVAL IN HAUTE-SAVOIE

Join us on Saturday 11 June at the Lac Bleu at Morillon for a full day of free introductory whitewater activities, followed by an evening in Taninges with an open-air cinema and various talks about our shared asset, water.

Our very first festival will bring surprises and amazing discoveries!

Info: haut-giffre.co.uk and en.prazdelys-sommand.com

The people of Haut-Giffre



KARINE RICHARD, PRIMARY SCHOOL TEACHER AND EWE FARMER

Karine is a nature lover who's been living in the village since 2010. Her main profession as a primary school teacher imbued her with a love of sharing, which she has managed to retain in her business, offering tours of the farm, meeting hikers on the mountain pastures and passing her knowledge on to a young apprentice.

The type of landscape at Sixt-Fer-à-Cheval means that she needs to take her ewes to various locations for summer pasture: Salvadon, located above the Cirque du Fer-à-Cheval, at the foot of the Pointe de Sans Bet

and at the gateway to the hamlet of Frenalay. The pasture areas are small and every available space is used to feed her Thônes and Marthod ewes.

She sells her ewe milk cheese directly from her sheep farm or at the local markets in the valley.

labergeriedulochet.com (in French)

JULIEN DÉNÉRIAZ, FARMING SKI INSTRUCTOR

Julien's days take on a particular rhythm, waking at 4.45 am for the first milking of the cows. In the winter, at 8 am, he heads to the slopes at Le Grand Massif to wear his other hat as a ski instructor.

In the summer, his days are equally busy taking his animals to pasture beyond the valley.

He fell into farming as a youngster and, after studying at farming college, he set up on his own and created

a GAEC (farming collective) called le Clavitant in La Rivière-Enverse, a 2,500 m² holding with 175 hectares of pasture and 150 Montbéliard and Abondance dairy cows.

FABRICE ANTHOINE, WARDEN AT THE LARGEST NATURE RESERVE IN HAUTE-SAVOIE

Fabrice is a local lad, a mountain lover who knows all the nooks and crannies in the Giffre area. There's nothing he doesn't know about the flowers, rocks and animals that inhabit the region, as he's been working at the Sixt-Fer-à-Cheval/Passy nature reserve since 1984.

As a warden, his mission is to enforce the current rules around hunting, fishing and protected areas, log the wildlife within the reserve, raise awareness in the community and set up scientific protocols for various

studies (on lakes, soil and plants).

But what he loves best is being in the heart of the mountains that watched over him as he grew up. All of us here hold a little piece of the mountains deep within our hearts.

STAY IN COMPLETE COMFORT

LE CHALET DE JO: A MOUNTAIN DREAM



Le Chalet de Jo is a former farm dating from 1726, rated as 4 épis and 4 stars, which its owners Florence and Joël have carefully renovated, creating a wooden cocoon for those who love the charm of the mountains and their history. Here we can accommodate up to 8 guests in full comfort, where you can enjoy a sauna with a view over the surrounding mountains. Guests can also stay at Le Mazot or La Remise, two historic buildings adjacent to the chalet, which have also been renovated in an environmentally sensitive way, featuring pellet-burning stove, rainwater harvesting, wood repurposed from the former buildings and outdoor solar-powered lighting, and all fitted with a jacuzzi to add to that feeling of well-being.

From €1,500 per person for 4 people

*Le Chalet de Jo
chaletdejo.fr (in French)*

LE PELLY: A MILLION-STAR CAMPSITE



For the past 7 years, Anne and Jean-Pierre Chaigneau have been welcoming guests from far and wide seeking an escape at the "bout du monde" (end of the world) in this area classified for its stunning natural beauty. Only 10 minutes' walk from the foot of the entrance to the Cirque-du-Fer-à-Cheval, Le Pelly is ideal for hikers to stay overnight, over the weekend or longer. You can hire tents for between 4 and 6 people, including Canadian bell tents and canvas bungalow tents. Don't miss! The "Mountain Adventure Tent" 2-person Canadian tent will take you back to nature in comfort with a hint of adventure. Le Pelly is a two-star establishment, but given the magical surroundings with waterfalls and majestic peaks, it's a place that defies classification.

From €48 for a 2-person tent, breakfast option available

*Le Pelly campsite
lepelly.com (in French)*



1, 2, 3, BIKE!

THE MANY SIDES OF CYCLING

Thanks to its geographical position, you can get involved in all forms of cycling in Haut-Giffre.

Road cycling at the Joux Plane pass. This epic mountain pass that defies categorisation is 11 km long with an ascent of almost 1,000 m. Your calves will be on fire but when you arrive at the finish with a view of the valley, Mont Blanc and La Pointe des Sales, you'll be glad you did it!

Take to the gravel on the "Fil du Giffre" *voie verte* (greenway cycling route) between Taninges and Sixt-Fer-à-Cheval, with 26.5 km taking in all that Haut-Giffre has to offer, including the Chartreuse de Mélan, the forest at La Rivière-Enverse, the Lac Bleu in Morillon, the Gorges des Tines and the famous Cirque du Fer-à-Cheval. The Fil du Giffre can be explored on hybrid bikes as a family or on a more serious gravel bike.

Head over to the Grand Massif domain and try out the FatScoot, which is somewhere between a mountain bike and a scooter, ideal for hurtling down the mountain slopes. As a bonus, why not stop off at the La Vieille farm for a restorative meal? The Grand Massif has many mountain biking trails so you can explore the mountains. We love the descents, but also having the option of using the ski lifts!

Trainee acrobats can also get involved at the pump track in Morillon. This landscaped course offers you the chance to try riding the bumps, while the more daring can cut some amazing aerial shapes.

Top tip: watch the daredevils amusing themselves while you enjoy Lac Bleu with its white sand, restaurant and treetop trail. A day well spent.

AURÉLIEN MAHAUT, THE VALLEY'S VERY OWN CONDUCTOR

He knows the valley paths like the back of his hand, having worked here full time since 2005. In winter, he tends to the Nordic skiing area and in the summer, he maintains the 650 km of trails in Haut-Giffre. He and his team start getting things ready from early May so that hikers and cyclists can make the most of the region in the height of summer, setting out markers, cabling and tree maintenance. It's an adventure in itself! Over 100 km of mountain bike trails and 70 km of paths designed especially for electric mountain bikes are available for use.

MOUNTAINS OF EVENTS

VÉLO VERT FESTIVAL, ALL HAIL THE BICYCLE

From 3 to 5 June, the neighbouring village of Samoëns will be hosting the Vélo Vert Festival. To mark the occasion, Morillon is the starting point for three races on Sunday 5 June: the Cube electric discovery ride, the Cube discovery ride and the family ride. A calm end to a weekend of bicycle madness and entertainment.

velovertfestival.com/en



HAUT-GIFFRE ULTRA TRAIL RUN: 16 TO 19 JUNE

Ultra running in Haut-Giffre? Yes! And it's in early June, the perfect time to kick off the running season in the valley. Access all areas: Tête de Bostan, Bout du Monde, Lac de Gers, Grenairon... You name it! Nothing beats a 127 km challenge! The less adventurous among you can take part in other races from 9 km to 96 km.

uthg-trail.com/?lang=en



TOUR DES FIZ TRAIL: 8 TO 10 JULY

Organised by the Passy Tourist Office who share responsibility for the Sixt-Fer-à-Cheval nature reserve, The Tour des Fiz Trail is a running event between Passy and Sixt-Fer-à-Cheval. Ranging from 12 km to 70 km, the different trail routes give you the chance to explore the playground of the marmots and ibex that have made this nature reserve their home and built its reputation around the Les Fiz rock.

traildutourdesfiz.com (in French)



LES RENDEZ-VOUS INTIMISTES DU HAUT-GIFFRE: JULY AND AUGUST

Les Rendez-Vous Intimistes du Haut-Giffre is back for a third season. This cultural event features shows, concerts and recitals in various locations in the valley, such as the castle ruins at Châtillon-sur-Cluses, the village centre at La Rivière-Enverse or the Lac Bleu in Morillon.

Schedule to be confirmed



SUMMER HIGHLIGHTS

SIXT-FER-À-CHEVAL

YOGA *Festival*

LE RENDEZ-VOUS DES YOGIS FROM 19 TO 21 AUGUST 2022

Every summer, planet yogi comes to the heart of Sixt-Fer-à-Cheval, giving you the chance to disconnect and enjoy a sense of oneness with the mountains as your backdrop. The mantra for the 3 days: take the time to breathe, relax, unwind, spend some quality time, while getting the very most out of this superb natural area.

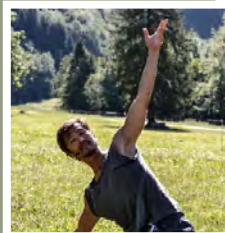
Schedule for the 7th edition from 19 to 21 August 2022: Vinyasa yoga, Ashtanga yoga, Eva Ruchpaul's Hatha yoga technique, chair yoga, Yin yoga, sophrology and meditation. Guests will include local teachers such as Julia Barnes, who is one of the festival's organisers. Simon Park "the flying nomad"

and world famous yoga teacher will teach his very own Liquid Flow yoga in a mass yoga class held in the Cirque-du-Fer-à-Cheval.

Classes will comply with any COVID measures in force at the time of the festival.

Don't miss: an open-air festival in the heart of Sixt-Fer-à-Cheval and its cirque, the largest mountain cirque in Europe, in all its natural vibrancy.

Schedule and registrations available from Haut-Giffre Tourisme.



NEWS STORY IDEAS IN HAUT-GIFFRE

ONE HIKE, FIVE WATERFALLS: A FAMILY OUTING IN THE SALES VALLEY

Starting at Nant-Sec, take the road towards the Sales Valley. You'll be treated to one of nature's wonders at every turn. The first one being "*La Reine des Alpes*" (queen of the Alps), Le Rouget waterfall at 80 m high. After walking for around an hour and a half, you'll reach the Pleureuse waterfall and its companion, the Sauffaz. From there, you'll tackle the mountain following the Torrent de Sales. Your arrival at the majestic Clos de Sales will be met with the sound of marmots and water flowing beside you. The further you go, the louder the sound of water will become. The source of the sound is the Trainant waterfall just opposite, nestled between the cliff and the hiking trail. You'll get up close and personal and feel a frisson

of admiration for this work of nature. The climb will continue and you'll reach the Sales waterfall, so close that it'll feel like a natural mist, caressing your face as you pass.

After around two and a half hours of walking, you'll come to the Sales Valley where mountainside chalets brave the elements in all seasons.

Take a break in a mountain refuge, enjoy the view and plan your next adventure.

Hike: 6 years and up (enthusiastic walkers)

Start point at 800 m (Nant Sec), end point at 1,870 m (Sales refuge).



HIKING TRAIL PREPARATION: KICKING OFF IN MAY

The local community (*La Communauté de Communes des Montagnes du Giffre*), represented by Aurélien Mahaut's team, starts work from mid-May preparing 650 km of hiking trails in Haut-Giffre. These technicians replace cables, bridges and route signage while also pruning trees and clearing paths blocked by winter activity. Their aim? Getting everything ready for the start of the summer holidays.



WALKING UNDER THE STARS: EVERYTHING'S DIFFERENT AT NIGHT

The *Conservatoire d'Espaces Naturels de Haute-Savoie* (a regional association for nature preservation) offers night-time walks, where you can gaze at the stars and observe the biodiversity without the effects of light pollution.

From 8 years and up, we head to the Sixt-Fer-à-Cheval/Passy nature reserve and just take it all in.

cen-haute-savoie.org (in French)



CHAMOIS SURVEY: WITH FABRICE ANTHOINE

On the first Saturday in July, the Sixt-Fer-à-Cheval/Passy nature reserve starts getting their house in order. The aim is to survey the chamois population in Giffre/Arve area. And this means counting any new additions.

The work is divided into various sectors: the Sales valley, Lac d'Anterne, Salvadon, reaching Chamonix or Magland in the Arve valley. Hunters, mountain guides and knowledgeable volunteers join forces to calculate the rate of reproduction in the chamois population.

The task requires the ability to identify females, young born this spring, young born last spring and males. This allows the year-on-year reproductive index to be calculated. Easy, you may think! Well actually, no. It needs to be accurate because the reproductive index indicates the movement of animals in the mountains, the places where they tend to thrive and the areas they leave behind. This all happens over a single weekend so that the same animal isn't counted more than once. The life of a chamois isn't easy!



SEE YOU AGAIN *in winter?*

CONTACTS

Press Officer France: Anais Alaurent
Olivia Payerne Agency
a.alaurent@agence-op.fr
+33 (0)6 63 35 34 64

Press Officer Belgium: Dimitri Papageorges
Mindshake
dimitri@mindshake.biz
+32 475 770 570

Press relations: Laureline Gervais
chargee.communication@haut-giffre-tourisme.fr
+33 (0)6 20 02 80 34

Head of communication: David Merzougui
communication@haut-giffre-tourisme.fr
+33 (0)6 45 79 54 88

🌐 www.haut-giffre.co.uk
📍 Haut-Giffre Tourisme
📱 @hautgiffretourisme

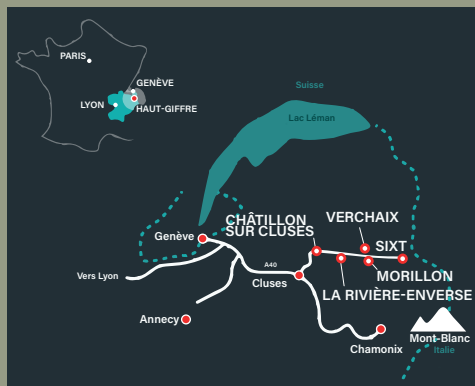


Photo credits: Bouilleur de Photos, Camping le Pelly, David Casartelli, Alex Celaire, Chalet de Jo, François Coffy, Alexandre Compain, Gérad Gachignard, Thomas Garcia, Laureline Gervais, refuge du Grenairon, Jean-Philippe Junier, Latitude Canyon, Paul Leroy, Frank Miramand, Olivier Octobre, Passy Tourist Office, Gilles Piel, Profeel Parapente, Soren Rickards/Samoëns Tourist Office, Vélo Vert Festival