



Evolution Wireless Digital

New professional charging option and the latest software updates

Wedemark/Amsterdam, 15 September 2023 – Sennheiser is now shipping a professional charging solution for its Evolution Wireless Digital family: The LM 6070 charging module enables professional users to conveniently recharge BA 70 batteries in the rack-mount L 6000 charger.

Available now: The LM 6070 charging module (pictured with two BA 70) for the L 6000 rack-mount charger



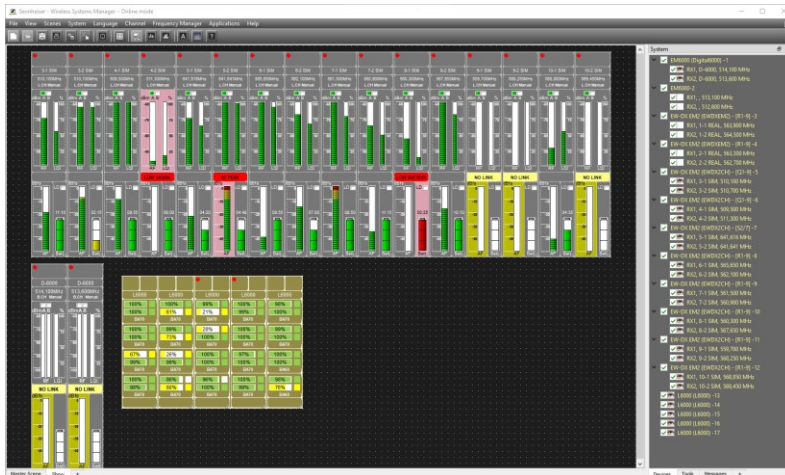
One LM 6070 can recharge two BA 70 batteries, with the L 6000 (19", 1U) accommodating four of these modules. Three-colour LEDs for each charging bay show the battery status at a glance, with more details on the charging process available in the Wireless Systems Manager software. Before using the LM 6070 in an existing L 6000 charger, operators need to download the latest firmware version at www.sennheiser.com/l-6000 or www.sennheiser.com/lm-6070 (please scroll down to Firmware Updates).



The L 6000 rack-mount charger with four LM 6070 modules



The **Wireless Systems Manager software** has been updated to support the new charging option. Version 4.6.0.4 is available for Windows and macOS platforms and can be downloaded at www.sennheiser.com/wsm.

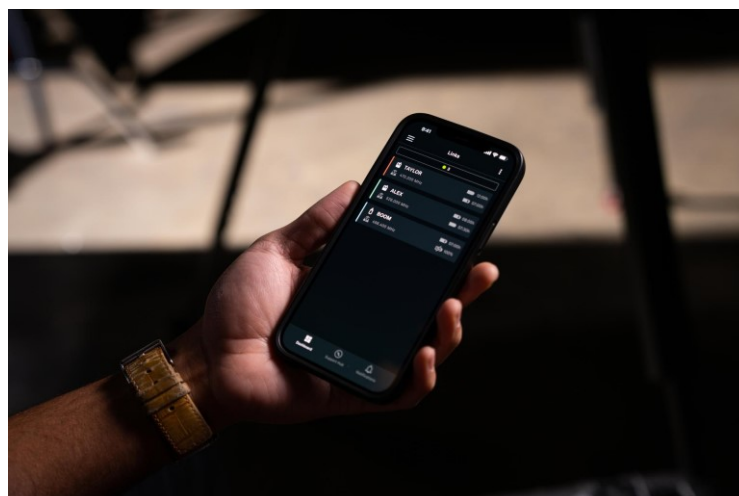


Version 4.6.0.4 of the Sennheiser Wireless Systems Manager now supports the LM 6070 charging module and features various improvements

The new WSM version also supports bulk operations for simultaneously restarting, resetting and audio-resetting multiple selected EW-DX devices. Enhanced messaging, improved functionality and bug fixes round off the new software version.

The **Smart Assist app** has been updated, too. Version 2.0.5 now supports a “light” landscape mode and carries the latest EW-DP firmware version 1.9.0, which resolves a scanning issue that some users of the EW-DP camera microphone systems experienced.

Version 2.0.5 of the Smart Assist app includes the latest firmware update for EW-DP (version 1.9.0)





Auto-scan will now perform a complete spectrum scan in just three seconds and provide users with the best available frequency. If EW-DP is operated in congested spectrum, the receiver will notify the user that range may be limited so that precautions can be taken.

The EW-DP firmware update is rolled out via the update of the Smart Assist app, so all EW-DP users are kindly requested to download the latest app version from the Apple App Store or the Google Play Store. The app will automatically push firmware 1.9.0 to all connected EW-DP EK receivers.

Integration of EW-DX into the Smart Assist app is scheduled for October 2023. More information about the app is available at www.sennheiser.com/smart-assist-app.

(Ends)

The high-resolution images accompanying this media release can be downloaded [here](#).

About the Sennheiser brand

We live and breathe audio. We are driven by the passion to create audio solutions that make a difference. Building the future of audio and bringing remarkable sound experiences to our customers – this is what the Sennheiser brand has represented for more than 75 years. While professional audio solutions such as microphones, meeting solutions, streaming technologies and monitoring systems are part of the business of Sennheiser electronic GmbH & Co. KG, the business with consumer devices such as headphones, soundbars and speech-enhanced hearables is operated by Sonova Holding AG under the license of Sennheiser.

www.sennheiser.com
www.sennheiser-hearing.com

Global Pro Audio Press Contact

[Stephanie Schmidt](#)
stephanie.schmidt@sennheiser.com
+49 (5130) 600 – 1275