

Schmidbauer Presents at the WindEnergy Trade Fair

Wind Energy, the largest global trade fair for the wind industry, will take place in Hamburg from September 27 to 30, 2022. As an expert in demand throughout Europe for the installation of wind turbines, Schmidbauer will naturally be at the start of this event. The company also intends to do pioneering work on the subject of hydrogen.

Gräfelfing/Hamburg, 23. September 2022. Germany's leading supplier of mobile cranes and special transports from Gräfelfing near Munich, Germany will be present with its subsidiary Fricke-Schmidbauer. The trade fair, which normally takes place every two years, will be presenting itself on site again for the first time. Due to the COVID pandemic, a purely digital edition had to be switched to in 2020. Not an insignificant break period in the highly innovative and booming industry in view of the climate and fossil energy crisis.

Forerunner in wind power

A lot is also happening for Schmidbauer. The company is increasingly applying its expertise in the context of the energy transition. In any case, the company was one of the most experienced partners in the field of onshore and offshore wind power. The technology developed quickly, wind turbine components became heavier and heavier, and within a very short time the weights that had to be moved doubled. Schmidbauer accompanied the development as a strong competence partner from the beginning and developed solutions. *"We see the many renewable energy projects in which we are involved as an opportunity. In particular, the expansion of wind power occupies and challenges us enormously. An increasing internationalization of our business goes hand in hand with this development,"* emphasizes Managing Director Werner Schmidbauer on the company's roadmap.

Pioneer again: Hydrogen Capital Hamburg

Schmidbauer now wants to transfer the knowledge he has acquired, powerful machines and practical experience to the next big topic in the energy transition: Hydrogen. Here, too, a gigantic infrastructure has to be built – and heavy loads transported along with it.

Since January 2022, the company has therefore become a member of the Renewable Energies Hamburg (EEHH) industry network. The city of Hamburg wants to become the European metropolis for hydrogen. The EEHH therefore networks companies that are using their expertise to advance this project. Accordingly, Schmidbauer has also been brought on board. As the subsidiary Fricke-Schmidbauer is located in Hamburg, there is a contact person directly on site.

Symbiosis of theory and practice

"Our acquired know-how is useful, among other things, when it comes to transportability and lifting in the design of plants. If clean planning is carried out here, development or transition can be accelerated enormously. The earlier we are involved, the better," says Stefan Schmidbauer, explaining the connections. Of course, the company is not only well positioned in theoretical matters. The vehicle fleet is also ready for new challenges. With the LR1800 crawler crane, which can still lift 102 tons at a lifting height of 170 m, and the Power Boom for the LR11350, Schmidbauer is ready to support the energy turnaround in the onshore and offshore sector.

A special feature is the effort to use electric drives for the vehicles where it is already possible. In this way, it is possible to operate the enormous machines without emissions.

At Wind Energy 2022, Schmidbauer is taking the opportunity to exchange ideas with experts from the wind and hydrogen scene to lay the foundations for future projects and thus jointly drive the energy transition a little further forward.

Schmidbauer will be present at WindEnergy 2022 in **hall B6 at booth 153**.

Company profile:

Schmidbauer is the leading provider in Germany for mobile crane services and special transports of all sizes with the performance plus - a full-service concept that combines state-of-the-art technology with sophisticated engineering and human expertise. Founded in 1932, the traditional company serves many industries as an innovative partner for lifting and moving heavy loads: from the construction, energy and chemical industries to plant and mechanical engineering. The Schmidbauer Group, headquartered in Gräfelfing near Munich, employs around 600 people and provides nationwide coverage with its subsidiaries Fricke-Schmidbauer Schwerlast GmbH and Rieger & Moser GmbH & Co. KG, provides a large fleet of special vehicles at almost 30 locations nationwide, and is also represented internationally with branches and sales offices in Estonia, Finland and France.

Pictures:



Neusiedlersee



Pollenfeld



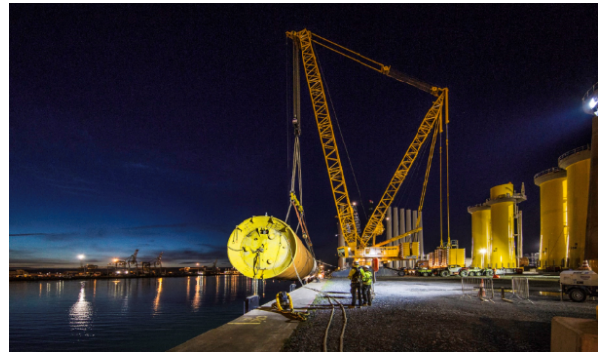
Pollenfeld



Pollenfeld



Van Oord Offshore Belfast



Van Oord Offshore Belfast



Wind mill Allianz Arena



Wind mill Allianz Arena