

RECOUP

REcycling Of Used Plastics Limited

Can the UK Cope With PTT ?



UK Plastic Packaging Arisings and Recycling Data

UK Plastic Packaging Arisings	Total (k tonnes)	Rigid (k tonnes)	Film (k tonnes)
Consumer	1,534	1,119	414
Non Consumer	726	378	348
Total	2,260	1,497	763

from UK Plasflow report

From 1,119kt Rigid consumer Plastic Packaging;
594kt Bottles
525kt PTT

2016 UK Plastic Packaging Recycling Data

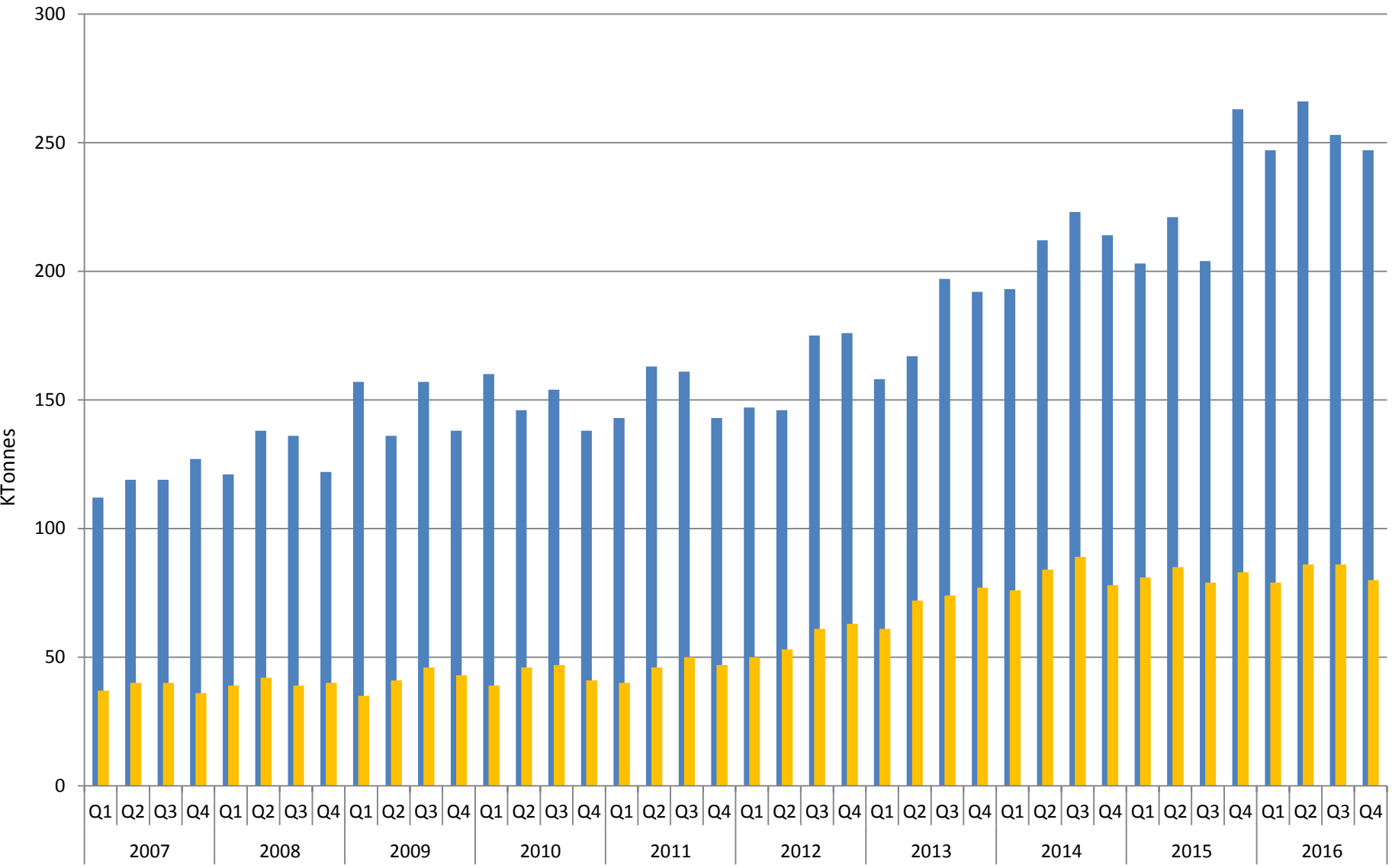
	Q1	Q2	Q3	Q4	2016 Total
Plastic	247,129	266,762	253,837	247,260	1,014,988
UK Tonnes	78,400	85,900	85,800	81,600	331,700
UK %	32%	32%	34%	33%	32.6%

2017
51% business target
44% recycling
1000kt to be recycled



2020
57% business target
48% recycling
1085kt recycled

UK based vs total plastic packaging reprocessing



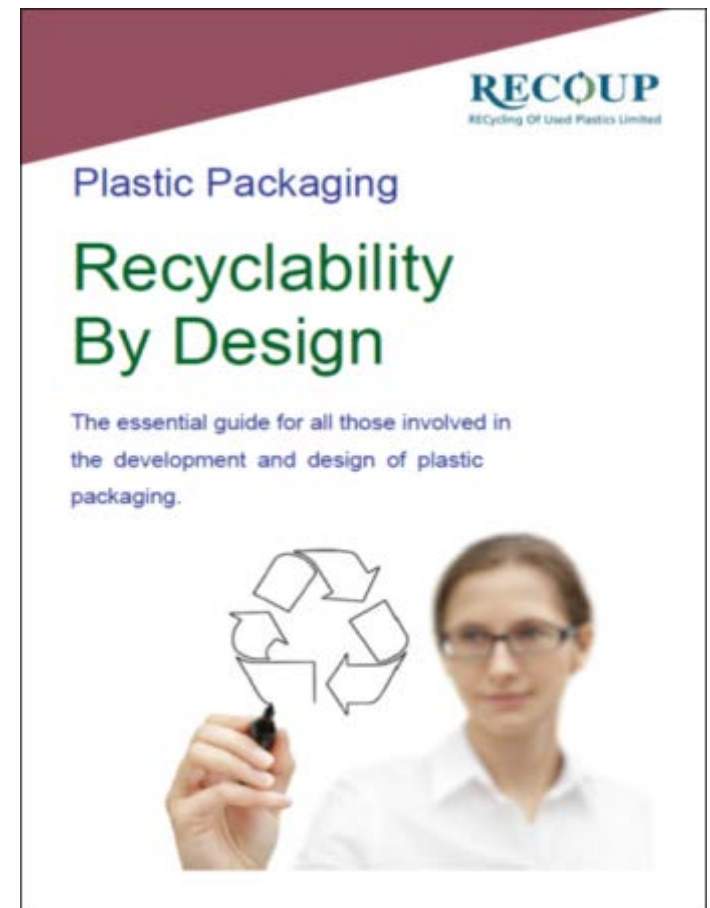
Recyclability By Design

- Guidelines for Packaging Technologists and Developers who use plastic packaging
- More interest in recyclability considerations
- Next update will be released in September
- EU review and alignment options

- Pack Recyclability Reviews



Free download from www.recoup.org



RECOUP Pack Recyclability Testing

RECOUP promote the use of their knowledge of packaging recyclability and their contacts / members in the recycling industry, and run packaging sorting and reprocessing trials.

As a service offered to brand owners and designers, the trials test whether current (or future) packs actually make it through each stage of recycling including collection, sorting, plastic sorting and reprocessing.

At the same time, the detailed reports and understanding will help with future developments of both packaging and recycling system innovations.

One example, where a result is now available and visible in the marketplace, is the Nestlé coffee jar cap.

The cap for Nescafe original has historically been a dark brown, which, RECOUP tests confirmed, was not detectable by NIR. When a re-launch of the product was planned, Nestlé considered changes which could be made to improve recyclability. The brand re-launch was combined with a colour change which allowed it to be detectable going through the MRF.

Nestlé provided sample caps of various shades to RECOUP, which were tested through a mixed recycling facility. The NIR equipment is set to detect PP and PE.

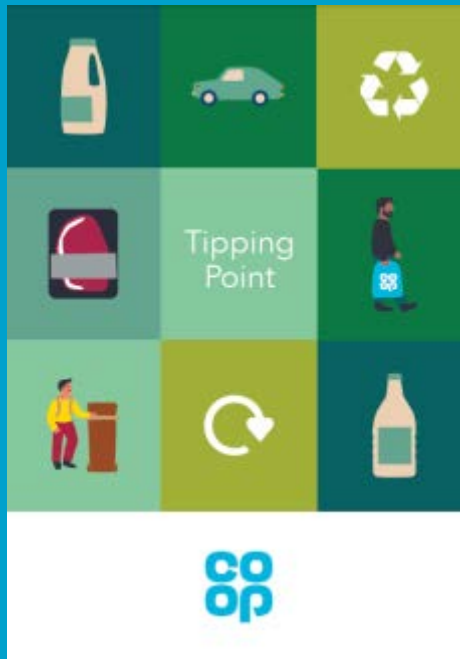
The result is a lid which is a red colour, which is detected by NIR.

So, as well as the visual improvement that marketing wanted, Nestlé made a step forward in terms of their sustainability by being able to separate and recycle that PP component.



Co-op

Commitment To Improving Pack Recyclability



<https://blog.coop.co.uk/2016/11/23/tipping-point/>

Protein Packaging Changes

- Moved all red meat MAP packs to clear monomaterial aPET.
- Moved cooked meats out of PVC and progressively moving to clear monomaterial aPET.
- Moved turkey to clear monomaterial aPET.
- Moving fresh salmon and smoked mackerel to uncoloured PP skinpack.
- Moving fishcakes, and breaded and battered fish to clear monomaterial aPET.
- Moved kievs and breaded chicken to clear monomaterial aPET.
- Retained PP for chicken and pork.

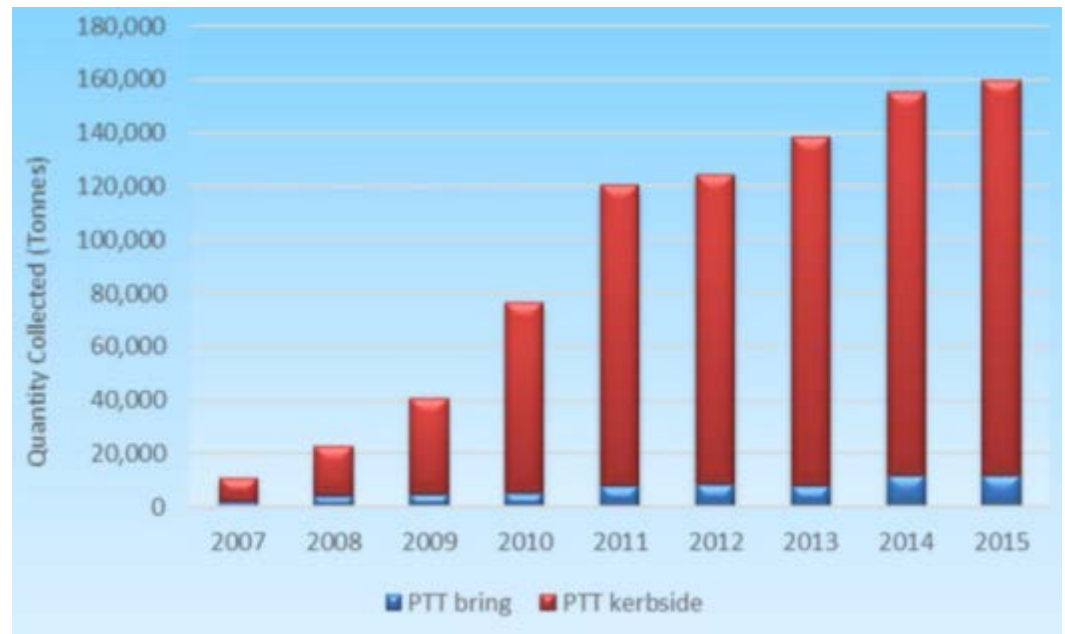
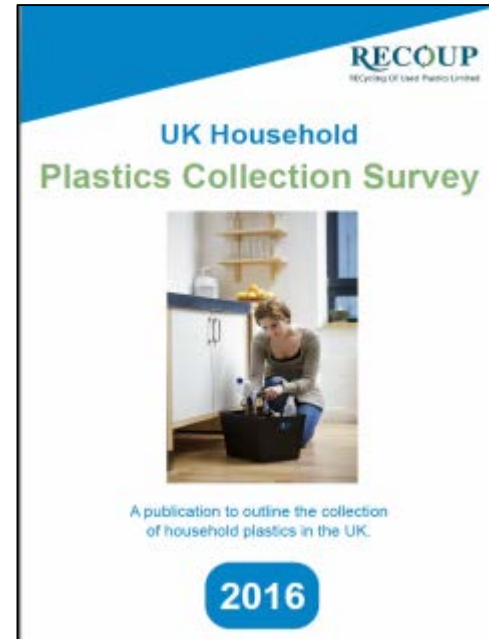
Household Plastics Collection Survey

500kt of household plastics packaging collected for recycling from UK households

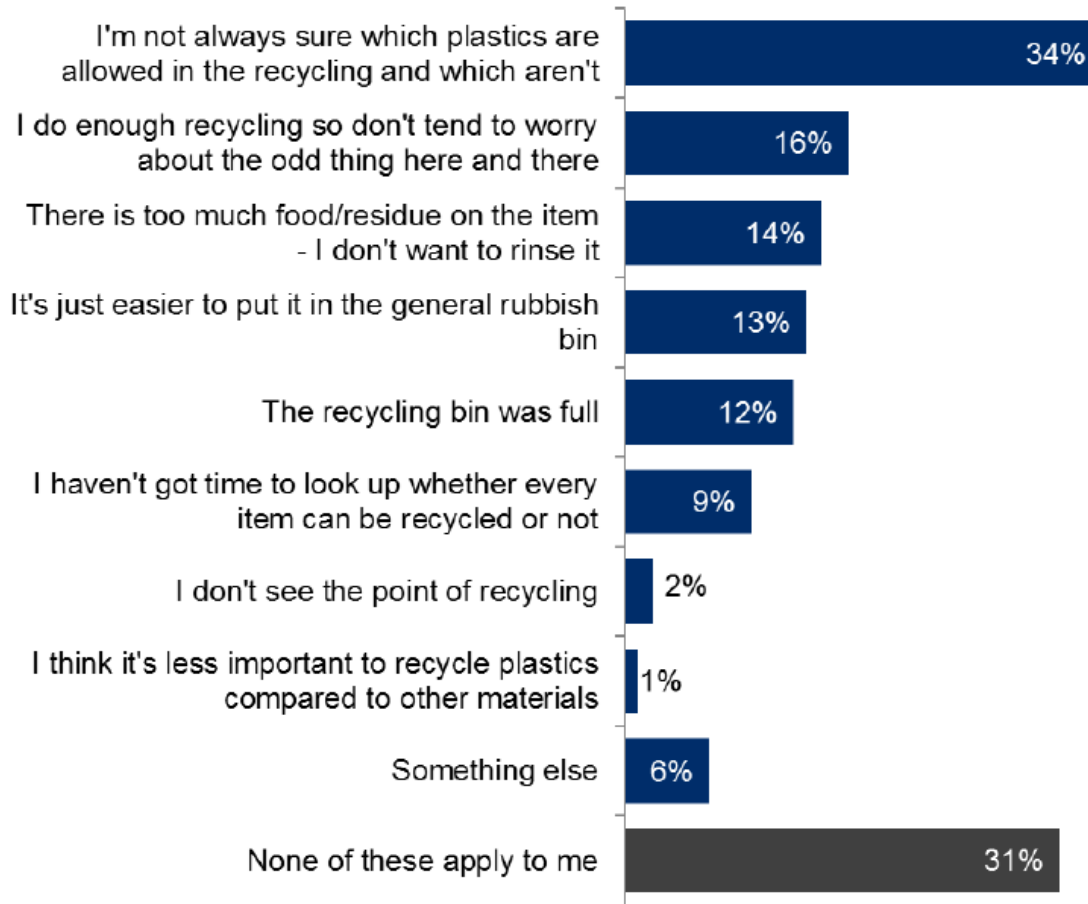
From 160kt PTT;

50% - 60%	PET
25% - 40%	PP / PE / PO
2% - 5%	PS
1% - 2%	PVC

340kt bottles
160kt PTT



Consumer Behaviour



Consumer Attitudes & Behaviour



Plastics Packaging and Recycling

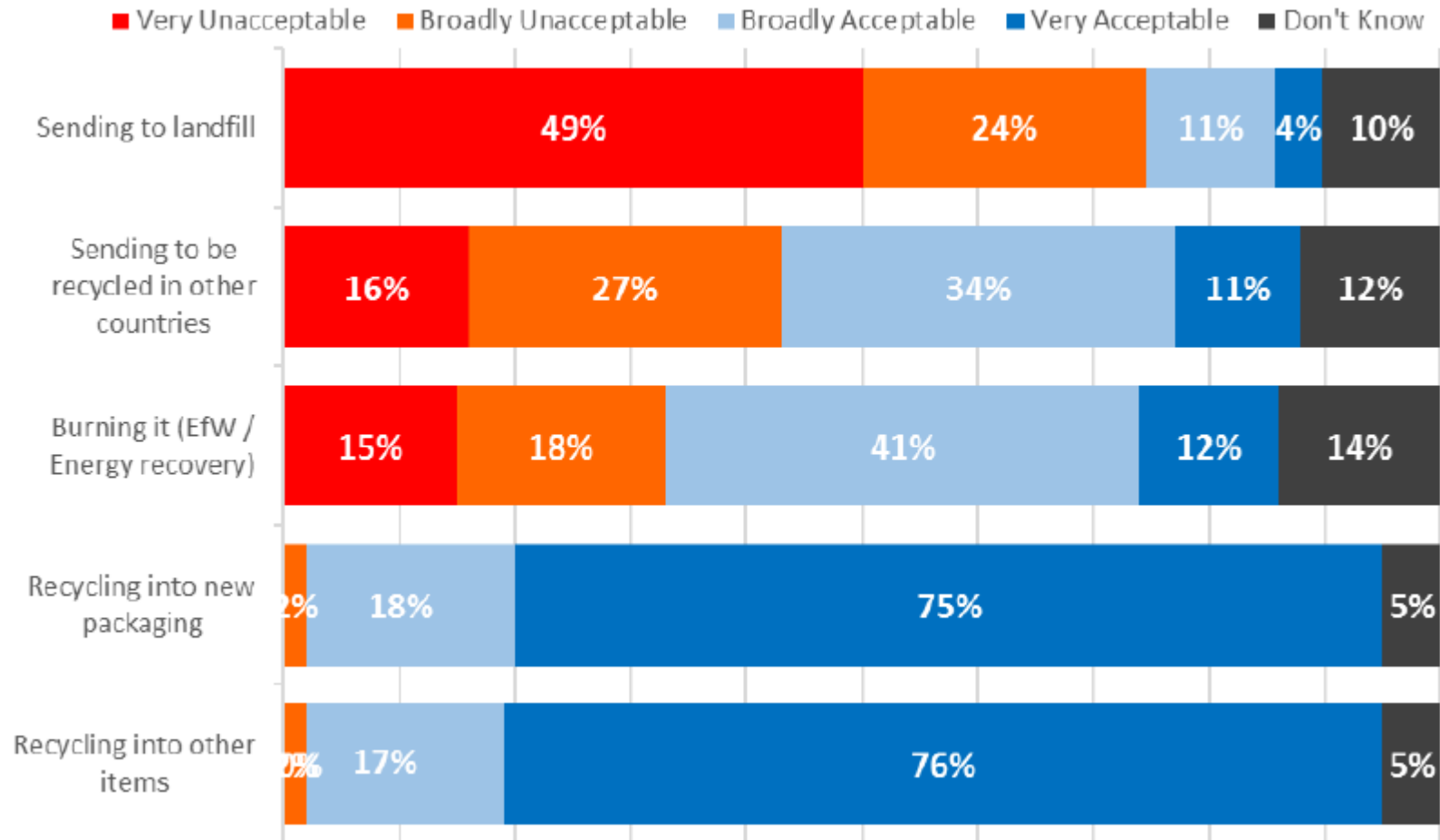


79% use OPRL to some extent – either often or occasionally

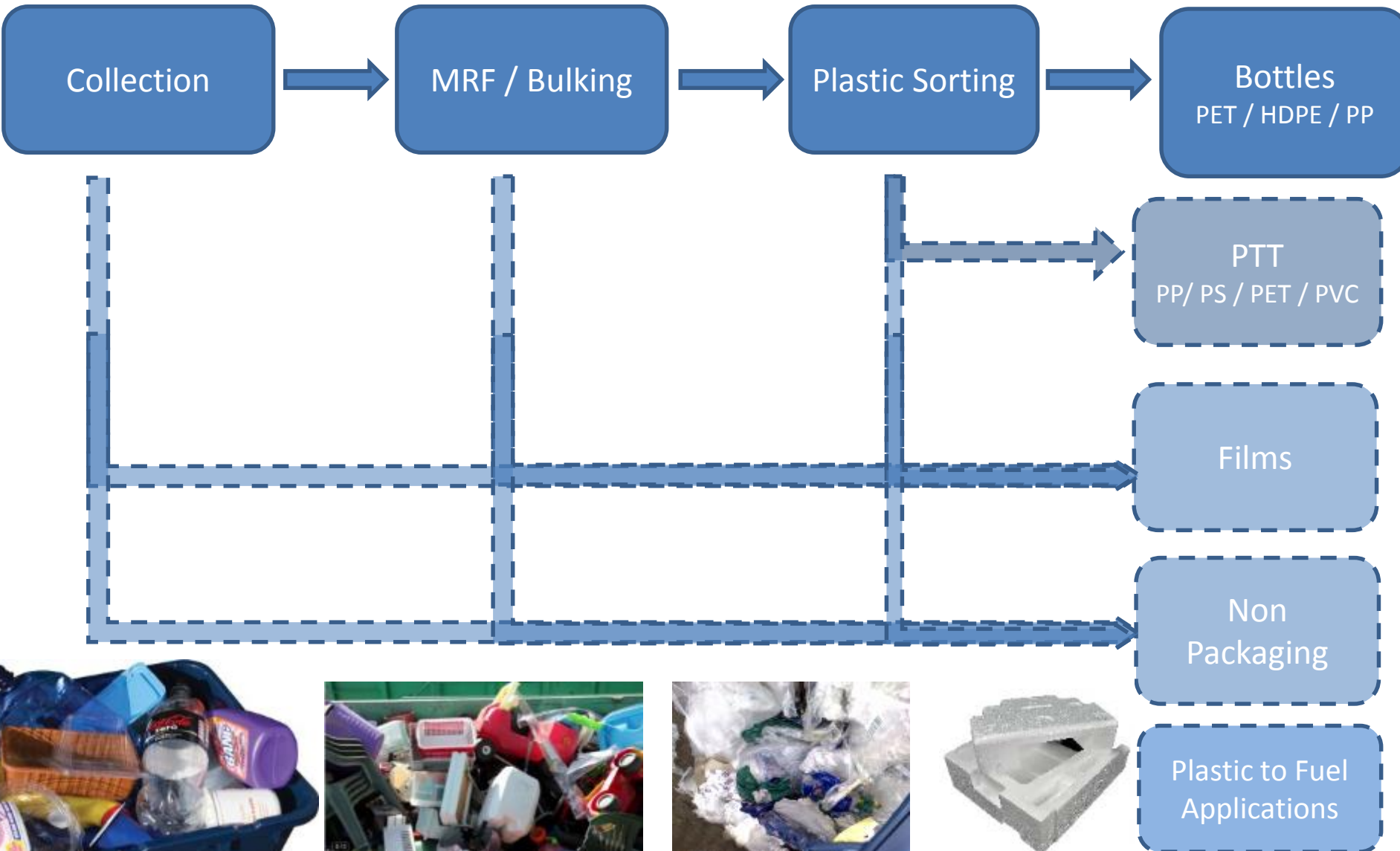


Please do not tell me to check local recycling - that means nothing to me. Either it can be recycled or it can't (preferably the former).

How Acceptable Are Different Options For Consumers



Plastic Recycling Chain Evolution



Recycled Plastic Products From PP pots and trays



A Word on Quality (from 2007)

- Growth of kerbside schemes and separate collection of recyclables has significantly increased material recovery rates
- Aware that paper, steel, aluminium and plastic bottle reprocessors have noted that there has been, in many cases, **a reduction in quality** mainly as a result of contamination by other material types – plastic is often mentioned.
- MRF input tonnages have dramatically increased in some cases by a factor of x3 and some have been **unable to maintain previous quality levels**
- In other cases the sorting facility has been required to handle more material fractions entering the MRF with often **limited ability to deal with the additional material** stream(s)
- The density of collected material entering the MRF has increased as collection vehicles are able to compress materials and reducing the efficiency of 2D and 3D sorting systems

the guardian

UK world politics sport football opinion culture business lifestyle fashion environment tech

home environment energy pollution climate change wildlife

Guardian sustainable business
Circular economy

Campaigners reject plastics-to-fuel projects: but are they right?

Campaigns in the UK and Australia point to grassroots backlash against plastics-to-fuel sector that could be worth £1.5bn by 2024



www.parliament.uk



Accessibility

Home **Parliamentary business** MPs, Lords & offices | About Parliament | Get involved |

House of Commons | House of Lords | What's on | Bills & legislation | **Committees** | Publications

You are here: Parliament home page > Parliamentary business > Committees > All committees A-Z > Commons Select Committee on the Banning of Non-Recyclable and Non-Compostable Packaging

Commons Select Committee

Debate on the banning of non-recyclable and non-compostable packaging

the guardian

UK world politics sport football opinion culture business lifestyle fashion environment tech

home environment pollution climate change wildlife energy

Guardian sustainable business
The new bottom line

Only 14% of plastics are recycled - can tech innovation tackle the rest?

A new group of companies is innovating on the problem of plastics recycling by tackling everything from styrofoam to Ziploc bags

MailOnline

Home **News** U.S. | Sport | TV&Showbiz | Australia | Femal | Health | Science | Money |

Latest Headlines | News | World News | Arts | Headlines | France | Pictures | Most read | Wires | Discounts

More than 1 billion a year 'recyclable' black trays used for ready meals and fruit by supermarkets end up in landfill

- Food trays used by retailers are 'invisible' to sorting machines because of colour
- Their black pigment is more 'aesthetically-pleasing' but cannot be detected
- Problem is almost as bad as coffee cups, which are also largely non-recyclable
- It would cost less than 0.5p per tray to change colour, but retailers are resistant
- Waste separated for recycling but sent to landfill has increased by 84 per cent



Committee schedules a debate on the banning of non-compostable packaging following an e-petition started on petition.parliament.uk.

By SHARI MILLER FOR MAILONLINE

Supported by

GM

About this content

1,684 22

Mary Catherine O'Connor

@mco

Wednesday 22 February 2017 15:44 GMT



Summary

Need to ;

- Stop talking about PTT as a fraction
- Create the value chain for PET pots and trays
- Understand how rationalisation and new developments will impact the market
- Find a way to create the EPR platform and infrastructure to support increased PTT recycling
- Encourage use of post consumer recycled content
- Champion quality and market transparency
- Be able to robustly defend plastics and plastics recycling
- Understand what we are aiming for in the longer term



Stuart Foster

Chief Executive Officer

RECOUP
REcycling Of Used Plastics Limited

Tel: 01733 390021

E-mail: stuart.foster@recoup.org

Website : www.recoup.org



Recoup_uk
@recycleplastics



Stuart Foster