

**INTRODUCING
THE BUSINESS SUITE**

A new level of comfort & privacy

flydubai

An evolution in business

As the demand for premium air travel services across our region increases, the business class product on board flydubai continues to evolve.

We're taking the next step to optimise the comfort of our passengers in business: on some of our newest aircraft, we're introducing a business cabin featuring a business suite.





A new level of comfort

The new business suite will take comfort on board to the next level; it's been tailor-made for flydubai to offer business passengers an exceptional travel experience.

In the design of the business suite, every detail has been considered. Whether passengers want to work on board, enjoy something to eat, catch a movie or simply get some sleep, the flydubai business suite is packed with features to ensure passenger comfort.



A premium experience

The arrangement of the 10 suites, designed exclusively for single-aisle aircraft, will allow direct aisle access for every passenger and allow our cabin crew to serve passengers with ease.

But when it's time to get some rest, the privacy door can be closed and the seat effortlessly transitioned into bed mode.

So, from a fully-closed suite experience to a more traditional open plan seat for greater social interaction, passengers will be able to choose their own level of privacy based on their mood.





Exceptional design

The ergonomics of the suite are exceptional. It has been shaped around the passenger to provide optimum comfort, maximum living space and privacy during the flight.

Activated electronically for a flawless transition between selected seat positions, the seat bottom and seat back automatically adjust to provide optimal support.

In the suite, the seat couldn't be easier to put into the preferred position as there's a touchscreen personal control unit conveniently located next to the suite's monitor.

Space to sleep

Our new suite will offer business passengers a truly comfortable living space, as well as enhanced privacy. The seat's door brings a complete sense of seclusion to the suite.

And the suite really comes into its own when it's time for passengers to get some sleep.

The ottoman, which acts as a footrest when the seat is in an upright position, completes the bed so there's ample foot space for sleeping comfort. In sleep-mode, the seat is fully flat.





It's all in the detail

No details were overlooked when designing the new business suite. Discreet and thoughtful stowage solutions will keep a passenger's personal items readily accessible while maintaining a clutter-free living space.

Ambient lighting has been set into the shell of the seat. It's also been incorporated under the ottoman and inside personal stowage areas, so the entire suite has a relaxing ambience.

And to allow the use of personal headphones with the inflight entertainment system, there's device pairing and Bluetooth functionality, as well as a range of power options, including wireless charging.

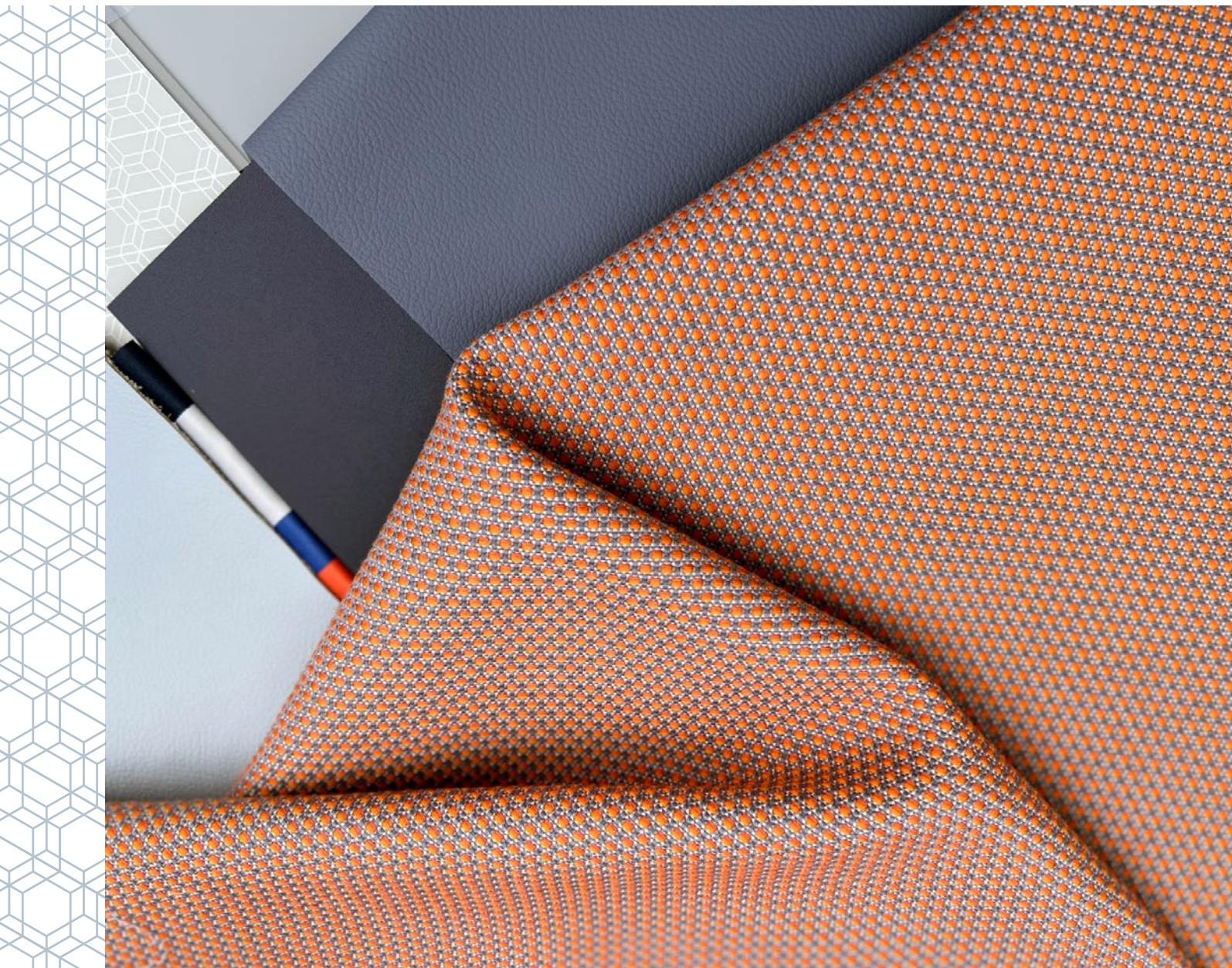


Dining on board

For dining, the generously-sized bi-fold table is easy to release from its stowage under the suite's side table, and just as easy to stow once it's time to sit back and relax and watch a movie.

Every suite has a 17-inch 1080p HD built-in touchscreen for an immersive viewing experience with hundreds of blockbuster movies and popular TV shows to enjoy.





Outstanding finish

The suite's finish is exceptional too. The seat is beautifully upholstered in materials which bring a sense of cosiness and warmth to the onboard environment. The contrasting leather headrest with stitch tag detail completes the seat's look.

The soft textile selected for the seat, flecked with orange accents, provides superb passenger comfort, particularly when the seat is in bed mode.

Monochromatic cool greys and rich blues, with accents of our signature orange, create a calm environment with a pleasing aesthetic.

The carefully selected colours and materials all bring a sense of serenity to the suite's living space.

