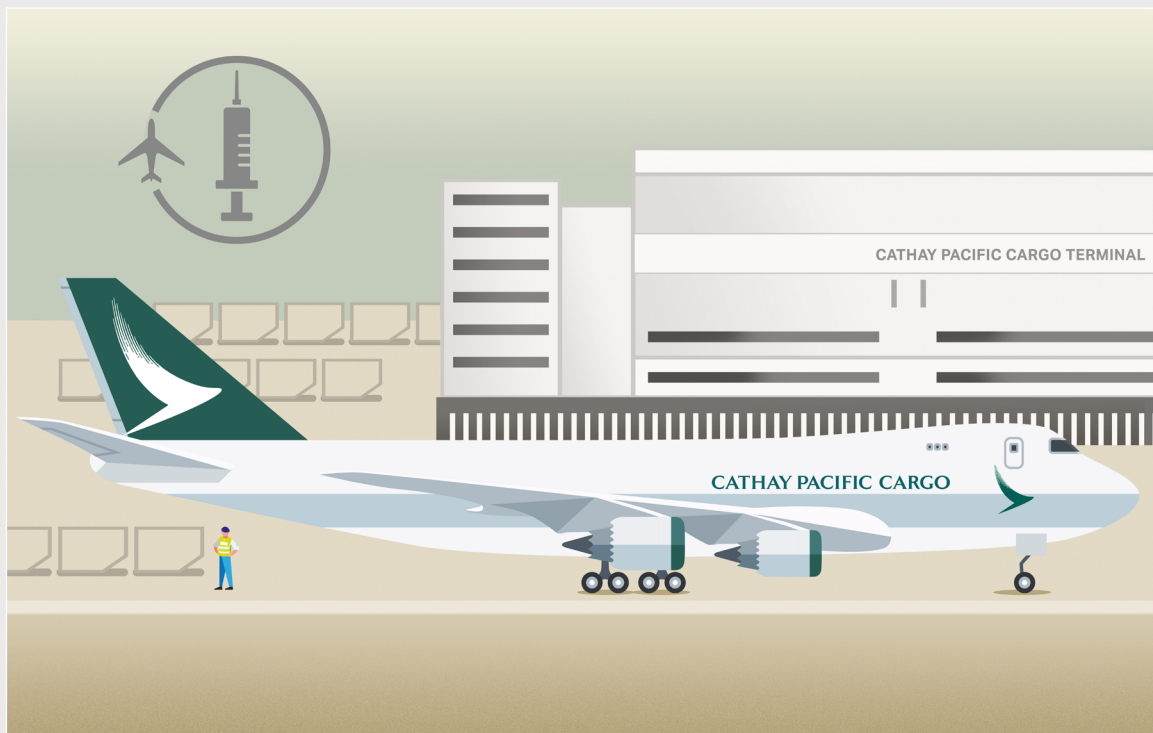




VACCINE SOLUTION

A comprehensive vaccine solution for precise temperature management



Please visit cathaypacificcargo.com for more information on our vaccine solution.



OUR COMPLETE VACCINE SOLUTION

A new tailor-made solution bringing together the best of
Pharma LIFT, Priority LIFT and our next-generation
track-and-trace solution, Ultra Track



PHARMA LIFT

- Dedicated vaccine handling process based on our world-class Pharma LIFT product for temperature-sensitive pharmaceuticals
- IATA CEIV Pharma certified handling processes and infrastructure
- Priority access to thermal dollies



PRIORITY LIFT

- Priority space access
- High uplift priority
- Flown as booked



ULTRA TRACK

- Complimentary use of our next-generation track-and-trace product, Ultra Track
- Proactive 24/7 monitoring by our Operations Control Centre (OCC)

BUILDING ON OUR PROVEN EXPERTISE AND EXPERIENCE

PHARMA QUALITY ASSURANCE

Recognised pharma capability by industry bodies



IATA CEIV Pharma accreditation onboard and on the ground at Hong Kong International Airport

76



stations capable of handling pharma shipments



Member of the Pharma.Aero alliance

CONTAINER SOLUTIONS FOR ALL YOUR NEEDS

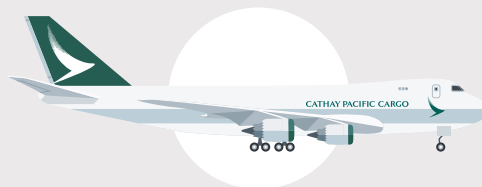
Active and passive container options powered by our partners, including:



OUR FLEET & NETWORK



100-plus scheduled freighter flights per week, an extensive passenger aircraft network and multiple charter options

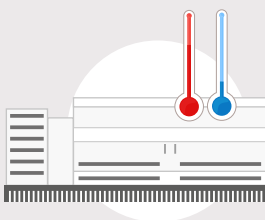


20-strong Boeing 747 freighter fleet, plus cargo-only passenger aircraft



Interline airline partners to serve regions where we do not fly

ON THE GROUND



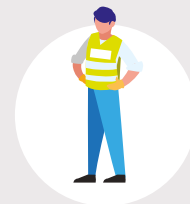
Cathay Pacific Cargo Terminal: capacity to handle 6.6 million vaccines daily



Priority towing to and from the aircraft, plus thermal dollies and shelters to further protect shipments



Dry ice stations and charging points for containers

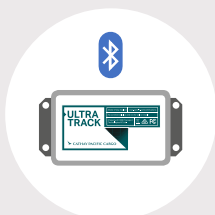


Trained, experienced personnel in Hong Kong and at outstations

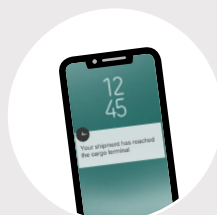
ENHANCED TRACKING, 24/7 MONITORING

ULTRA TRACK*

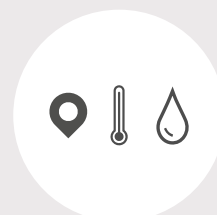
Our next-generation track-and-trace system will be progressively rolled out on selected routes. It offers:



Low-energy Bluetooth data logger by Core with 5-year battery life



Near real-time shipment information and notification



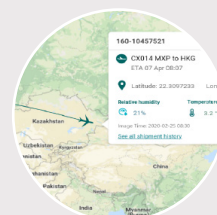
Multidimensional readings (GPS location, temperature and humidity)



Piece level



Constant updates and visibility via cathaypacificcargo.com and EzyCargo



User interface features live link to Flightradar24 for airborne sectors

NEAR REAL-TIME AND PROACTIVE MONITORING*

Our new Operations Control Centre offers:



24/7 monitoring



Live chat and proactive responses on shipment status to customers



Proactive intervention in the event of temperature excursions, malfunctions, delays or damage

* Available on applicable routes only and will be progressively rolled out from Q1 2021.