

August 9—28  
2016



# Mom's the Word

By Linda A. Carson,  
Jill Daum,  
Alison Kelly,  
Robin Nichol,  
Barbara Pollard &  
Deborah Williams

A CO-PRODUCTION WITH  
PRAIRIE THEATRE EXCHANGE (WINNIPEG)



**Belfry**  
Theatre

SEASON SPONSORS



PRODUCTION SPONSORS



SUMMER 2017

INCREASED LOBBY SPACE

THEATRE SPACE REFRESHED AND REPAINTED

IMPROVING PATRON COMFORT

RESURFACED WHEELCHAIR ACCESS

SEAT REPLACEMENT

EXPAND WOMEN'S WASHROOM FACILITIES

EXPANDED CONCESSION

# We have great news at the Belfry



Our old cranky seats have been replaced with spanking new ones and our lobby is about to get a facelift. How are we bringing about such exciting alterations? Stay tuned for our capital campaign launch for the answer.

All these changes will enable us to ensure that your time at the theatre is the best ever.

*Helen Lansdowne*, President



With financial support from  
**Community Infrastructure Program**

Avec l'appui financier du  
**Programme d'infrastructure communautaire**



# Belfry Theatre

The Belfry Theatre presents

# Mom's the Word

by Linda A. Carson, Jill Daum, Alison Kelly, Robin Nichol,  
Barbara Pollard and Deborah Williams

Cast  
(in alphabetical order)

**Trish Cooper** Alison  
**Sarah Donald** Jill  
**Yumi Ogawa** Linda  
**Jenny Wasko-Paterson** Deborah  
**Lisa C. Ravensbergen** Robin

**Director** Michael Shamata  
**Set and Costume Designer** Pam Johnson  
**Lighting Designer** Bryan Kenney  
**Sound Designer** Paul Tedeschini  
**Stage Manager** Jennifer Swan  
**Assistant Stage Manager** Sara Robb  
**Assistant Director** Deborah Williams  
**Movement Coach** Jessica Hickman

*Mom's the Word* was first produced in 1995 by the Arts Club Theatre Company (Vancouver, Canada) in association with the Mom's the Word Collective.

*Mom's the Word* is produced by permission of the Authors and Marquis Entertainment Inc. [www.marquisent.ca](http://www.marquisent.ca). This production is produced in association with Prairie Theatre Exchange.

The use of video or audio recording devices is strictly prohibited at all times.

*Mom's the Word* is generously sponsored by:

**mothering touch**  
the place for new and expectant parents



Season Sponsors



Public Funders



The Belfry Theatre is a registered Canadian charity, 11921 5549 RR0001.

The Belfry Theatre is a member of the Professional Association of Canadian Theatres and engages under the terms of the Canadian Theatre Agreement professional artists who are members of the Canadian Actors' Equity Association.

The Belfry Theatre is a member of the Theatre Communications Group, USA., Greater Victoria Chamber of Commerce and the Professional Arts Alliance of Great Victoria.

Please enjoy the performance.

## Belfry Theatre Staff

Front of House Manager  
Venue Technician  
Box Office Clerk  
Production Manager  
Marketing & Communications Director  
Box Office Manager  
Box Office Clerk  
Summer Box Office Manager  
Executive Director  
Facilities Supervisor & Head Technician  
Company Manager  
Capital Campaign Coordinator  
Scenic Artist  
Graphic Designer  
Artistic Associate & Outreach Coordinator  
Belfry 101 Co-Facilitator  
Financial Officer  
Head of Props  
Master Carpenter  
Artistic Director  
Scenic Painter & Custodian  
Technical Director  
Development Manager  
Head of Wardrobe  
Associate Artist  
Box Office Clerk  
Box Office Clerk  
Box Office & Front of House

### Belfry Support Staff

B4Play Audio Technician  
Photographers

### Child Minder

### Crew

Jane Broomfield  
Ben Burrow  
Sarah Catterall  
Alex Currie  
Mark Dusseault  
Casey Fitterer  
Jenny Fitterer  
Ian Gibson  
Ivan Habel  
Keith Houghton  
Valerie Houle  
Judi James  
Carole Klemm  
Jeff Kulak

Erin Macklem  
Dave Morris  
Patricia O'Brien  
Peter Pokorny  
Dale Pudwell  
Michael Shamata  
Lara Shepard  
Gregory Smith  
Susan Stevenson  
Joanne Stichbury  
Deborah Williams  
Eryn Yaromy  
Allison Yauk  
Golnaz Zad

Ben Brysiuk  
David Cooper  
Emily Cooper  
Jo-Ann Richards  
Peter Pokorny  
Don Craig

Leah Hiscock

Patricia Reilly  
Alex Sangster  
Aislinn Shotton  
Holly Vivian

## Board of Directors

President  
Vice President  
Secretary  
Treasurer  
Directors

Helen Lansdowne  
Dr. Monty Bryant  
Georgia Gibbs  
Robert Thomson, CA  
Gloria Back  
Richard Brownsey\*  
Dr. Sheila Elworthy\*  
Dr. Andrew Karwowski  
Joan Peggs  
Andy Stephenson  
Bob Tyrrell  
Roshan Vickery  
\*designate

## Honorary Board of Directors

Chair Emeritus  
Patrick Stewart  
Sherri Bird  
Barbara Greeniaus  
Robert Johnston Q.C.  
John Keay  
Joan Snowden  
Dr. Brian Winsby  
Michael Ziegler

Special thanks to Leah Hiscock for providing exceptional child care.

## Belfry Theatre

1291 Gladstone Avenue  
Victoria, British Columbia V8T 1G5

250-385-6815 Box Office  
250-385-6835 Administration  
250-385-6336 Facsimile  
www.belfry.bc.ca

Charitable donation number 11921 5549 RR0001

## Programme Advertising Design and Production

Victoria Arts Marketing  
P. O. Box 8629, Victoria, BC V8W 3S2  
250.382.6188

Email: vicarts@vicarts.com www.vicarts.com

Publishers Philomena Hanson, Paul Hanson  
Design & Production Rhonda Ganz



## This mom (and son!) spread the word.

If you would like to advertise in upcoming Belfry Theatre production programmes, please call Philomena and Paul Hanson.

250.480.3206  
E: vicarts@vicarts.com  
www.vicarts.com

VICTORIA *Arts*  
MARKETING

ARTISTIC DIRECTOR  
Timothy Vernon

PACIFIC  
Opera  
VICTORIA

Patrick Corrigan  
EXECUTIVE DIRECTOR

STORIES  
SO BIG  
THEY HAVE  
TO BE SUNG!

16/17 OPERA SEASON

*Verdi*  
**SIMON BOCCANEGRA**

October 13, 15, 19, 21, 23 / 2016

*Mozart*  
**THE MAGIC FLUTE**

February 16, 18, 22, 24, 26 / 2017


*Bouchard/March*  
**LES FELUETTES (LILIES)**

April 20, 22, 28, 30 / 2017

Tickets start at \$25 – call today!

250.385.0222 / 250.386.6121 / [www.pov.bc.ca](http://www.pov.bc.ca)

SEASON  
SPONSOR:

BMO  Financial Group

ANNUAL OPERATING  
GRANTS PROVIDED BY:



CRD  
Making a difference. Together





## WEEKLY SPECIALS

### Tuesdays

**burger & beer \$10.95**

*Fully loaded bacon cheddar burger  
or our famous veggie burger  
with a pint of Fernwood Lager*

### Thursdays

**wing night \$6.50** after 8pm

*Roasted garlic & honey,  
Frank's hot or whiskey barbeque*

### Saturdays & Sundays

**brunch on the weekends**  
11am - 2pm

PLUS....try our NEW  
amazing menu items

### Reservations:

250 412 2001

### Hours:

MONDAY

11:30am - 10:00pm

TUESDAY ~ FRIDAY

11:30am - 12 midnight

SATURDAY

11:00am - 12 midnight

SUNDAY

11:00am - 10:00pm

**CHILDREN WELCOME!**

## Audience Information

### Cellphones & Pagers

Please turn off your cellphones and pagers when you enter the theatre. If you need to be contacted in an emergency, please leave your name and seat number with our House Manager.

### Latecomers & Re-admission

The Director of each production designates moments in the show when the seating of latecomers will cause the least amount of distraction for actors and audience members. Should you leave the theatre, our House Manager will not be able to reseat you until one of these breaks.

### Babes in Arms

The Belfry is proud to produce adult contemporary theatre. Our productions are not suitable for children 10 and under, including babes in arms.

### Recording Devices

No cameras or recording devices are permitted in the theatre.

### Audience Advisories and Running Times

We make every effort to advise you of strong language, subject matter or extreme technical effects (strobe lights, fog). Please look for signs at the entrances to the theatre. Advisories and running times are available at the Box Office as of the first preview.

### Food & Drinks

Please feel free to take only food and/or drinks you've purchased from the Belfry bar into the theatre. Our goodies are packaged so that they don't make a lot of noise and disturb your fellow audience members.

### Perfume & Cologne

Please refrain from using perfume and cologne when you come to the theatre. Some of our patrons are highly allergic to scents.

### Electronic Cigarettes

Please refrain from using electronic cigarettes in the theatre, to avoid distraction for other patrons and the Artists on stage.

Thank you for your consideration.  
Enjoy the performance.





University  
of Victoria

University Centre  
Farquhar Auditorium

Seek culture, creativity, community.  
Find it at the Farquhar Auditorium.

# SHANGHAI NIGHTS



FEATURING  
THE SHANGHAI ACROBATS OF THE PEOPLE'S REPUBLIC OF CHINA  
**SEPTEMBER 3 & 4 AT 2:00 PM**

**Introducing the Farquhar Family Series!**



**The Cicada and the Ant**

Quebec's Sursault Dance

**October 23 at 3pm**



**Will Stroet of Will's Jams**

as seen on Kids' CBC

**December 4 at 11am**



**Hamelin**

AXIS Theatre's Musical Pied Piper

**January 15 at 11am**

**Tribute to Dave Brubeck**

Quebec's Remi Bolduc Jazz Ensemble

**January 21 at 7:30pm**

**International Guitar Night**

with the world's finest finger guitarists

**January 29 at 7:30pm**

**Starman**

an acoustic tribute to David Bowie

**February 8 at 8:00pm**

**Kiran Ahluwalia**

Juno award winning world music

**February 26 at 7:30pm**

**tickets.uvic.ca**

**250-721-8480**

TRANS

PACIFIC

TRANS

MISSIONS

Video Art Across the Pacific

ART  
GALLERY  
OF GREATER VICTORIA

ON NOW UNTIL  
SEPTEMBER 5, 2016



Canada Council  
for the Arts

Conseil des Arts  
du Canada



BRITISH  
COLUMBIA  
ARTS & CULTURE



CRD  
Creating a Different Tomorrow

SUPPORTING  
SPONSOR



AGGV.CA

IslandSavings  
PRESENTS

Victoria Conservatory of  
Music

FREE!

Open House  
Party!

September 10 | 10am - 3pm  
900 Johnson Street



- ★ Concerts every hour
- ★ Contemporary and classical Instrument Petting Zoos
- ★ Free mini-lessons
- ... plus treats and fun for the whole family!

VCM.BC.CA/OPEN-HOUSE | 250.386.5311





Ivan Habel and Michael Shamata

## Artistic Director's Notes

When I was Artistic Director of the Grand Theatre in London, Ontario, I received a cassette tape of a piece of theatre called *Mom's the Word*, recorded by CBC Radio. I listened. I laughed. I cried.

I invited *Mom's the Word* to the Grand, and out they came, children in tow. That was 20 years ago, and I now know that that was the first time that the show had been seen outside of Vancouver. It played on the Grand stage to appreciative audiences, and once again, I laughed and I cried.

I love this show, and I miss this show. The original moms reached an age when it no longer made sense for them to perform this first, original script, so the idea of creating a new version struck me, and here we are! With a new cast of actress/mothers, we are celebrating the joys and sorrows, the fears and rewards of motherhood.

Welcome to the first event in our 2016–2017 Season, and welcome to all the mothers in the audience. Welcome, too, to everyone who ever had a mother! May you also be moved to laughter and moved to tears.

Sincerely –

A handwritten signature in black ink that reads "Michael".

## Notes from the Executive Director

Mom took us all to our first day of school, with new clothes and school supplies to start a fresh year. Here we have these new Moms taking us all to our first play of our 41st season, in our favourite theatre all dressed up with new seats.

As much as we are certain you will enjoy this and all the other shows this season, we also look forward to your excitement for the changes we are making to our beautiful gem of a theatre. We began this summer by installing new seating, and next summer we have plans for improvements in our lobby, our concession, and to our entrance for those with mobility difficulties. These changes are part of our continued priority to make your theatre experience the very best it can be and equal to the very best in this country and abroad. We look forward to sharing all of our plans with you and hope that you share our excitement in these changes.

Welcome to our 41st year!

A handwritten signature in black ink that reads "Ivan".

My Mom ALWAYS  
has the Last Word!



Classes,  
Groups,  
Gear,  
and more,  
for babies  
and all those  
who love them!

975 Fort Street  
250-595-4905

[www.motheringtouch.ca](http://www.motheringtouch.ca)

Photo: Jeremy Salmon - Flickr

## INTREPID THEATRE

BLOWING YOUR MIND SINCE 1986.



Experience  
**50 shows**  
from around the globe  
at **CAMP FRINGE.**

**Aug 22 –  
Sept 4**

[intrepidtheatre.com](http://intrepidtheatre.com)



BRITISH COLUMBIA  
ARTS COUNCIL





Barbara Pollard, Alison Kelly, Robin Nichol, Linda A. Carson, Deborah Williams and Jill Daum

## Production History

*Mom's the Word* took its first baby steps at the Vancouver festival Women in View and the full production premiered at the Arts Club Theatre Company (Vancouver) in 1995. Over fifteen years later and after more than 2,500 performances to over one million people, the play has crossed the international dateline and the equator, entertaining audiences throughout five continents.

Written by Linda A. Carson, Jill Daum, Alison Kelly, Robin Nichol, Barbara Pollard, and Deborah Williams, *Mom's the Word* had a full gestation period going back to conception in the spring of 1993. Six Vancouver women who had once been exciting, glamorous and professional actors were now exhausted, bedraggled amateur mothers with ten children under six between them. They decided to get together to write a show about motherhood. They met regularly on Saturday mornings with their children. They talked, they laughed, they whined, they complained and they laughed some more. Suddenly, their first performance was just three weeks away. Although they had nothing on paper, they felt enormously better about their children, their skills as mothers and their lives in general. They had reinvented group therapy. Luckily, in the ancient tradition of oral history, they remembered each other's stories, and thus *Mom's the Word* was born.

Humourous, emotional, ecstatic and hysterical, *Mom's the Word* is a chorus line of confessional anecdotes and vignettes combined to create the mother of all comedies.

Jenny Wasko-Paterson,  
Lisa C. Ravensbergen  
and Trish Cooper

*Rehearsal photography*  
by Peter Pokorny



## Acting Company



Trish Cooper

### Trish Cooper

*Alison*

Trish is an actor and playwright from Winnipeg and is thrilled to join this wonderful group. She was last in Victoria with a Fringe show called *The Year of the Panda* in 2004. Last February, she performed at the Royal Manitoba Theatre Centre in *Myth of the Ostrich*. Trish's first full-length play *Social Studies* was produced at Prairie Theatre Exchange in 2013, with a second production at the Centaur Theatre in Montreal in 2014, and last year, at the Firehall in Vancouver. She'd like to thank her wonderful family, Sam, Cooper and Isaac, for coming along on this adventure.



Sarah Donald

### Sarah Donald

*Jill*

Sarah is thrilled to be back at the Belfry working with this fantastic group of Mamas! As an actor, she has worked in the UK, and across Canada at the Arts Club Theatre, Blue Bridge Repertory Theatre, Alberta Theatre Projects, Western Canada Theatre, Chemainus Theatre Festival, Boca Del Lupo, Vancouver Playhouse, the Firehall, the Gateway, Bard on the Beach, and Theatre SKAM, of which she is a co-founding member. As a musician, Sarah has spent years playing fiddle, performing and touring with many inspiring musicians. As an Interior Designer, she is co-founder of Hansenbuilt Construction and Design. And most importantly, as a Mum, Sarah is the lucky mother to her super fun and creative daughter, Molly!



Yumi Ogawa

### Yumi Ogawa

*Linda*

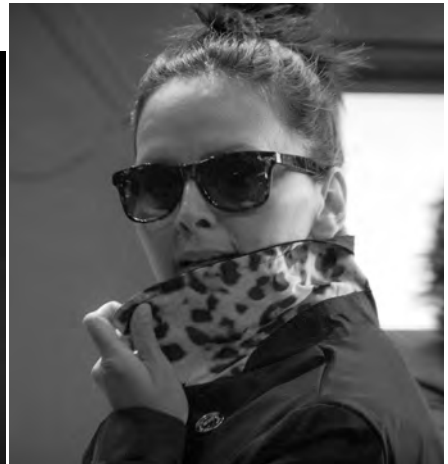
Yumi is an actor and writer based in Vancouver. She spent four years writing and performing with the sketch comedy group, Assaulted Fish. Her semi-autobiographical solo show, *Japanglish*, premiered in the Victoria Fringe Festival, and has gone on to tour many other festivals and high schools. As a member of the Wet Ink Playwriting Collective, she is currently working on two plays: *Japanglish: Part 2* and *The Gift*. When Yumi isn't wrangling her three-year-old daughter, she auditions for commercials, and is the writing instructor and dramaturge at Arts Umbrella.

*Rehearsal photography by Peter Pokorny*

## Acting Company



Jenny Wasko-Paterson



Lisa C. Ravensbergen

*Rehearsal photography by Peter Pokorny*

### Jenny Wasko-Paterson

*Deborah*

Jenny is thrilled to be back at the Belfry, where she was last seen as Katie in *Homechild*. Some other favourite credits include: *The Rivals* (Blackbird), the title role in *Sister Judy* (Arts Club), *Head Over Heels* and *A Midsummer Night's Dream* (Caravan Farm), *The Initiation Trilogy* and *The Score* (Electric Company), *Shape of a Girl* – North American tour – and *Speed* (Green Thumb), *The Tempest* (MadDuck), *The School for Wives* (Vancouver Playhouse / Manitoba Theatre Centre), *Proof* (CanStage), and *A Midsummer Night's Dream*, *Julius Caesar*, *Bartholomew Fair*, *King of Thieves*, *Peter Pan* (The Stratford Festival). Jenny has received a Jessie award and two other Jessie nominations. She studied at Studio 58 and The Stratford Festival Conservatory. Her favourite creation to date, with her husband Mike, is their son Dashiell. This one's for all the amazing Mamas!

### Lisa C. Ravensbergen

*Robin*

Last seen as Annie Cook in *The Rez Sisters*, Lisa is a multi-hyphenate theatre artist based in Vancouver on unceded Coast Salish territory. A play-maker, Jessie-nominated actor, writer, dramaturge, director, and sometimes dancer, Lisa supplements her practice with the joys of motherhood and the delights of self-produced works. She is a tawny mix of Ojibwe / Swampy Cree and English/Irish, and a graduate of Trinity Western University and Simon Fraser University. The Belfry holds a special place in her heart. Chi miigwetch – Hych'ka O Siem. What a privilege it is to give voice to diverse women's stories. An even greater honour: sharing this life with her bright-eyed boy, Nodin Ferrin.



**LANGHAM  
★ COURT ★  
THEATRE** **88**  
SEASONS

*announcing our*

# 2016/2017 SEASON

**NEXT TO NORMAL**

SEP 30 – OCT 15, 2016

**THE CRUCIBLE**

NOV 18 – DEC 3, 2016

**ONE MAN, TWO GOVNVORS**

JAN 20 – FEB 4, 2017

**TAKING LEAVE**

MAR 3 – 18, 2017

**DR. JEKYLL & MR. HYDE**

APR 21 – MAY 6, 2017

**PROOF**

JUN 9 – 24, 2017

**BOX OFFICE 250.384.2142**

**langhamtheatre.ca**



## Creative Team



Deborah Williams

### Deborah Williams

*Assistant Director / Co-Author*

Deb Williams is a multi-award-winning actress, producer, writer and one of the creators of the *Mom's the Word* series of plays. She has been a resident artist at the Belfry Theatre for a number of years, recently starring in *Vanya and Sonia and Masha and Spike* and will be back on stage in March in *Taking Off*. She is the co-creator/producer/host of *The Flame* in Victoria and Vancouver, a monthly storytelling event, annual TV special and weekly program on Roundhouse Radio. Deb has worked on stages across Canada for the past 30 years, is a community activist, event planner, gardener, knitter, 27-year wife and a proud mother of a couple of wonderful adult scientists.



Pam Johnson

### Pam Johnson

*Set and Costume Designer*

Pam is always thrilled to be back at the Belfry working with great friends and colleagues. For the Belfry she has designed: *The Valley, Proud, Homechild, Mom's the Word: Unhinged, Rough Magic, The Syringa Tree, A Guide to Mourning, Three Tall Women, Faraway Nearby* and *Homework and Curtains*. She also directed the show *The Sum of Us*. Pam is a seven-time Jessie Richardson Award-winner, a Monday Magazine Award-winner, and in 2012 she received a Career Achievement Award from the Jessies. Pam is an instructor at Studio 58, Langara College, and loves guiding young talent into their futures.

*Rehearsal photography by Peter Pokorny*



# Mom's the Word

## Hillside Printing

3050 Nanaimo Street, Victoria, BC  
Ph: 250.386.5542 • Fx: 250.386.7838  
sales@hillsideprinting.com hillsideprinting.com

## Creative Team



Bryan Kenney

### Bryan Kenney

#### *Lighting Designer*

Bryan is a Vancouver-based designer and has worked across Canada doing set, lighting, and projection design. He is excited to be returning to beautiful Victoria and the Belfry once again. Recent credits for the Belfry include: *Vanya and Sonia and Masha and Spike*, *Helen's Necklace* and *on the edge*. Other credits include: *Miss Understood* (Frank Theatre), *Les Liaisons Dangereuses*, *The Rocky Horror Show* (Capilano University), *Patron Saint of Stanley Park* (Halifax Theatre for Young People), *Almost, Maine*, *Trojan Women*, *Steel Magnolias* (Douglas College), *Boeing Boeing* (Keyano Theatre), *Anne and Gilbert the Musical* (Anne and Gilbert Inc), and *Lion in the Streets* (University of Victoria).



Paul Tedeschi

### Paul Tedeschi

#### *Sound Designer*

Paul is ridiculously delighted to be back at the Belfry. Belfry designs include *Puttin' On the Ritz*, *Vanya and Sonia and Masha and Spike* and *Home is a Beautiful Word*. Other selected credits include *Into the Woods* (Canadian College of Performing Arts), *39 Steps*, *Noises Off* (Western Canada Theatre), *Gaslight* (Blue Bridge Theatre), *Ring of Fire – Project Johnny Cash*, *Les Miserables*, *Buddy – The Buddy Holly Story* (Chemainus Theatre Festival), *Fresco* (Shadbolt Centre / The Cultch), and *Circle Mirror Transformation* (Arts Club Theatre). As always, thank you to Nicolle and Isidoro.



*Bravo Belfry Theatre  
for staging Mom's the Word,  
a rollicking celebration of parenthood*

### Carole James, MLA

Victoria-Beacon Hill  
Community Office  
1084 Fort Street

tel: 250.952.4211  
carole.james.mla@leg.bc.ca  
www.carolejamesmla.ca

## Creative Team



Jessica Hickman

### Jessica Hickman

#### *Movement Coach*

Jessica is honoured to be working with so many incredible mothers on this show! You may have seen her choreography in past Belfry productions such as *Puttin' on the Ritz*, *A Christmas Carol* and *Let Me Call You Sweetheart*. It is always a treat to work in this beautiful space, and with such an incredible team. Jessica also works as a director/choreographer with credits such as *Thoroughly Modern Millie* (Victoria Operatic Society) and *Bye Bye Birdie* (Glenlyon Norfolk School). In 2017, she will be directing two shows: *Tombstone: A Sci-Fi Western* (Ramshackle Theatre) and *Words of the Yukon* (Open Pit Theatre), as well as devising/performing in a new play with Twenty Something Theatre. Her work as the Crowd Director for *The Canadian Badlands Passion Play* sparked a desire to work with large crowds and thus she will be staging the Opening Ceremony for the Victoria Fringe Festival this fall. Thanks Mom for choosing to breed!



Jennifer Swan

### Jennifer Swan

#### *Stage Manager*

Born and raised in Victoria, Jen is happy to once again be Island-based. This is her 12th season (over 17 years) working at the Belfry. Other favourite Canadian theatres include: Theatre SKAM, Electric Company Theatre, Vancouver Playhouse, Canadian Stage, Caravan Farm Theatre and Theatre Calgary. Jen spent most of this past season living and working in Calgary – stage managing *The Little Prince the Musical* and *The Light in the Piazza* (directed by Michael Shamata), both for Theatre Calgary. She also works as Company Manager for Electric Company Theatre in Vancouver.

*Rehearsal photography by Peter Pokorny*

## Creative Team



Sara Robb

### Sara Robb

#### *Assistant Stage Manager*

Sara is excited to be back home and backstage at the Belfry for *Mom's the Word*. A graduate of Vancouver Island University in 2006, she completed her Stage Management apprenticeship at the Belfry and Bard on the Beach in 2010. She has been fortunate to live and work on Vancouver Island as the resident Stage Manager for Pacific Opera Victoria for the past five seasons. Favourite credits include: *A Christmas Carol* (Belfry), *Barber of Seville*, *Otello*, *Madama Butterfly*, *Albert*

*Herring*, *MacBeth* (Pacific Opera Victoria), *Marilyn Forever* (Aventa Ensemble at the Adelaide Festival), *Twist and Shout: The British Invasion*, *Les Miserables*, *Singin' in the Rain* (Chemainus Theatre Festival). She is a full member of IATSE Local 168, and is on the Board of Directors for Gotta Getta Gimmick.



At Berwick Retirement Communities, you will enjoy an unparalleled standard of living at a superior value. Berwick offers all the comforts of home with the amenities and hospitality you come to expect from resort style living. Find out more about The Berwick Way™.

**Visit [BerwickRetirement.com](http://BerwickRetirement.com)**

**Berwick Royal Oak:** 4680 ELK LAKE DR., VICTORIA | 250.386.4680

**Berwick House:** 4062 SHELBOURNE ST., VICTORIA | 250.721.4062

# PRESTIGE

PICTURE FRAMING ETCETERA

OVER 30 YEARS IN VICTORIA AT 2002 OAK BAY AVENUE  
250.592.7115 • [www.prestigepictureframing.ca](http://www.prestigepictureframing.ca)

*Let us care for your art and photographs*



PATIO - EVENTS - CATERING - BOOK YOUR PRIVATE EVENT NOW!

## MODERN FRENCH

*in the* Fernwood Square

1296 Gladstone Ave.  
[www.cavavictoria.com](http://www.cavavictoria.com)  
250.590.7982

Dinner Tuesday to Saturday 5pm – 9pm



*Celebrating 50 years!*

### Anniversary Alumni Festival

October 11 - 29, 2016 | 3 Alumni - 5 Shows!

**Charles Ross:** *One-Man Star Wars Trilogy, Lord of the Rings, and Dark Knight: A Batman Parody*  
**TJ Dawe:** *The Slipknot*

**Shannan Calcutt:** *Burnt Tongue*



2016/17

50<sup>TH</sup> ANNIVERSARY  
SEASON



### Les Liaisons Dangereuses

by Christopher Hampton | Nov. 10 - 26, 2016  
Sensual decadence and revenge are played as a high-stakes game by the French aristocracy.

SUBSCRIBE  
& SAVE!

All 8 shows:  
\$125

3 or 4 shows:  
\$39 or \$52



### Gut Girls

by Sarah Daniels | February 9 - 18, 2017  
A dazzlingly funny story of brash slaughterhouse workers who struggle to improve their lot in life.

### The Inspector

by Nikolay Gogol | March 9 - 18, 2017  
The timeless satirical farce about greed and corruption running amok in a government town.



University  
of Victoria

[PHOENIXTHEATRES.CA](http://PHOENIXTHEATRES.CA) | 250.721.8000

# Bravo!

2016-2017 Season  
Fundraising Campaign.

The following individuals have invested generously to raise funds in support of ongoing Belfry Theatre Operations.



## Director's Circle: Godsend (\$10,000+)

Patrick Stewart  
Anonymous (1)

## Director's Circle: Production Sponsor (\$5,000 – \$9,999)

Terry & Leslie Farmer  
Anne McLaughlin  
Dr. Stephen Tax

## Director's Circle: Artist Supporter (\$2,500 – \$4,999)

Eric & Lee Adler  
Stephen & Michelle Brown  
Rob & Shirley Hunter  
The Jawl Foundation  
Claude & Joan Murry  
Anonymous (1)

## Director's Circle: Member (\$1,200 – \$2,499)

Ian & Gloria Back Fund †  
Perry & Annamaria Bamji  
Sherri Bird & Bill Bird  
Edward J. Chambers  
Mary Jane Derksen  
Eric & Nora Clarke  
Katherine Farris & Kit Pearson  
David Harris Flaherty  
Peter B. Gaby  
Barbara Greeniaus & Bill Israel  
Ivan Habel  
Philomena Hanson  
Bruce & Barbara Houser  
Fiona Hunter  
In Memory of Jean Elizabeth Kódar  
Helen Lansdowne  
Lillian McKimm  
Robert Milne  
Michael Morris \*  
Bill & Maureen Murphy-Dyson \*  
Patricia O'Brien & Michael Gaudet  
Joan Peggs  
Barbara & Kim Potash  
Shelagh & Brad Rinald  
Michael Shamata  
Paul & Susan Siluch  
Lee & Karl Soberlak Foundation  
Frank & Moira Somers  
Andy Stephenson  
Susan Stevenson & Bruce McGuigan  
John & Suzanne Stewart  
Judy Stewart  
Avril & Bob Tyrrell  
Catherine & John Windsor  
Michael & Vicki Ziegler

## Disciple (\$1,000 – \$1,199)

Hon. David & Mrs. Sandra Anderson  
Susan & Gary Braley  
Commodore & Janice Drent  
Brian & Susan Findlay  
Mohan & Kathy Jawl  
Robert & Devi Jawl Foundation  
Cindy Petrowski & Phil Marsh

Gordon & Grace Rogers  
Ian Rye & Melina Boucher  
Margaret L. Smith \*  
Robert & Joan Snowden  
Anonymous (2)

## Adherent (\$500 – \$999)

Tom & Nancy Bailey  
Adrienne Betty  
Lorie Bradley & Russ Pym  
Jerri Carson  
Chris & Mary Chapman  
Dr. Dana Chlysta  
Donna Christie & Richard Shapka  
Leslee Farrell  
Eric & Michele Fretz  
Georgia Gibbs  
Carol A. Gray  
John & Sheridan Greeniaus \*  
Bob & Sara Harman  
Joe & Linda Harvey  
Jean Horowitz  
Bill & Joan Huzar  
Andrew Karwowski & Sylvie Cote  
Patri-Anne & Martin Kay  
John & Anne Keay  
John Krich  
Marty Laurence & Mort Nelson \*  
Bruce & Nikki MacKenzie \*  
Isobel Mackenzie  
Nightingale Preschool & Junior Kindergarten  
Kirk & Beate Northcott \*  
Michael Olson  
Ronald & Judith Parish  
Edwin & Carmen Pitcher  
Ronald & Juliana Polstein  
Pauline Price  
Mary-Ellen Purkis  
Adrienne Radford  
Jane & Steve Savidant  
Mary Scobie & Paul Boughen  
Alec Scoones  
Michael Stewart  
Robert Thomson  
Thomas & Diana van Cleave \*  
Terry J. Waller  
Tom Ward  
Dr. Monika & George Winn  
Patricia M. Young  
Anonymous (1)

## Advocate (\$150– \$499)

Marianne Alto  
Vi Armstrong  
Kenneth & Sylvia Austin  
Douglas Baer  
Clayton Baraniuk & Jason Dubois  
Gordon George Barefoot  
Robert & Evelyn H. Barrigar  
Beverly Berkhold  
Karen Blakely \*  
Christine & Michael Bloomfield  
Darralyn Bonnor  
Harry & Beryl Borris  
Pat Bourke & Barry Gros \*\*  
Gisele Boyer  
Peter Douglas Bray  
Elizabeth Bridger  
Monty & Nancy Bryant  
Sherry & John Butler  
Jane Butler-McGregor  
Jerry Callaghan †  
Mikell Callahan  
Miriam & Henry Caplan  
Carl & Carole Cederberg  
Ida Chong

Adelle Clements  
Anne Clinctett & Denny Gelinas  
Jane Clinctett  
Darlene Elaine Clover  
Chris & Susan Considine  
George & Diane Copley  
Les & Barbara Copley  
Patrick Corrigan  
John Corie & Jeanette McRae \*  
Ron Cox & Bev Suzuki  
Stephen Cushing & Debbie Gill  
Donald & Judith Daly  
Pat Davey  
Mavis Degirolamo  
Ruby Della-Siega \*  
Milus Douglas  
Donna Dupas  
John Dutton  
Lawrence Eastick  
Ross & Faye Eddy  
Derek & Katharine Ellis \*  
Rita Estock  
Bob & Sylvia Fair  
Delaine Faulner  
Carol Fedrau-Ens & Ron Hunter  
Gunnild Fischer \*  
Malcolm Foy  
Jane Francis & Dave Skilling  
Ann Geddes  
Peter & Beverly Gibson  
Geoff & Linda Giles  
Leslie Glazier  
Daphne Goode  
In Memory of Len Graves  
William Hamilton \*  
Glen Hammond & Catherine Scott  
Alan & Dianne Hanna  
Chris & Catriona Harker  
Don & Mary Harris \*  
Anne Holtzman & Gordon Philippe  
John & Elaine Hooper  
Katrin Horowitz  
Lynda & Walter Hundleby  
Audrey Johnson  
Rex Johnson  
Chris Jones & Catherine Wright \*  
Ray Jones & Diana Dampsy \*\*  
Don & Lydia Kasianchuk  
Stuart & Ann Kenning  
Nancy Kenyon  
Kindred Spirits Veterinary Hospital  
Bruce & Gwyneth Kingham  
Lois Lacheur & Derek Whittle  
Oliver & Helen Lantz  
Paul Leslie  
Allana Lindgren  
Dan MacDougall & Karen McDiarmid  
Wendy Magahay  
Ken & May Mah-Paulson  
Margaret Mair  
Peter & Helen Malcolm  
Robert & Lynda Malpass  
Margaret Martin  
Helen & Dan McAllister  
Mary McAvoy  
Frank McGilly  
Terence & Ann McMullen  
Lois McNabb  
Celso E. Mendoza  
Jon & Gail Muzio  
Bill & Coline Neilson  
Kelvin & Elisabeth Nelson  
Rob & Carol Nelson \*  
Alfred & Pamela Panter  
Margie Parikh & Lonni Friese  
Julie & Bill Pearce

(cont)



Bob Peart \*  
Carol & Emily Prowse  
Ross Morgan Richardson  
Jaci Ross  
Shirley A. Ross \*  
Ann Saddlemyer  
Barbara Scott  
David & Jean Screech  
Susan Snell \*  
Don & Jan Storch \*  
Sandra T. Stott \*  
Leonard & Valerie Stubel  
Corryne Taylor \*  
Kenneth Thornicroft

Giles Thorp  
Jeanette & Stephen Titus  
David & Dorothy Torontow \*  
Dave Traynor & Heather Wood \*\*  
Michael & Anne Tyler Fund †  
Blaire Walker  
Robert & Betty Wallace \*  
Sharon Walls  
Donovan & Maryla Waters  
Drs. Robert Weyant & Marsha Hanen  
Lorita Whitehead \*\*  
Jane Whiteley  
Barbara L. Wilson  
Marla & Hal Yacowar, QC

Anonymous (22)

Our thanks to the 145 Friends  
(up to \$74).

As of July 12, 2016.

\*\* New donor

\* Donor moved up a category since  
last show

† Through the Victoria Foundation

‡ Matching funds provided by Cenovus  
Energy Matching Gifts Program

## Legacy Gifts

The Belfry acknowledges the generous recent and past gifts from the estates of:

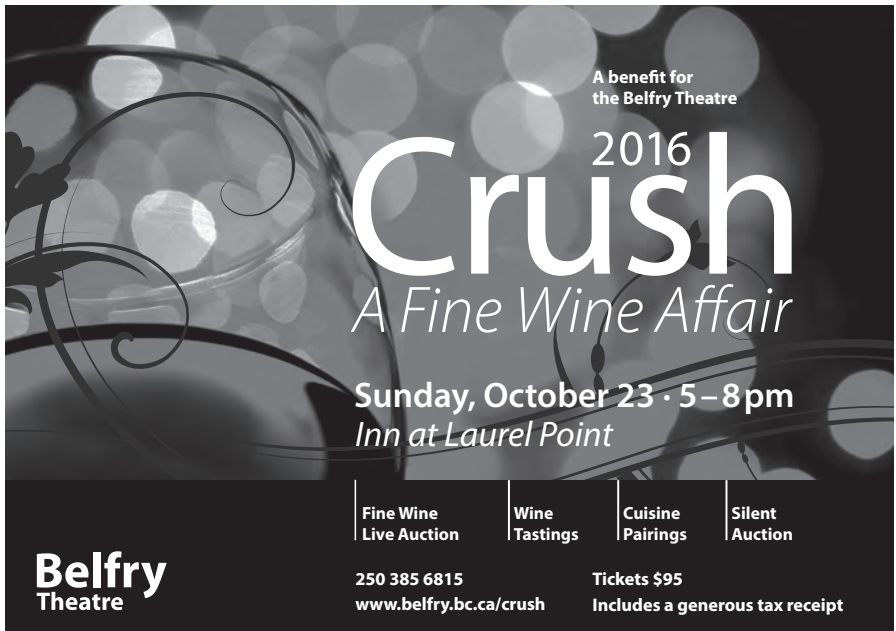
Shirley Mae Dawson M. Grace Mersereau Margaret Seens Alan Geoffrey White Anonymous

Gift planning is an inspired, meaningful and deeply personal way to secure the future of the Belfry Theatre. The support of visionary philanthropy ensures that the Belfry will continue to flourish as Greater Victoria's premier contemporary theatre company.

Consult your professional advisors about the tax advantages of charitable donations and bequests. We would welcome the opportunity to ensure that your gift is recognized according to your wishes during and/or after your lifetime. For more information on planning your gift to the Belfry Theatre, please contact: **Susan Stevenson**

**Development Manager**  
Tel: 250-385-6835, ext. 229  
[development@belfry.bc.ca](mailto:development@belfry.bc.ca)

Charitable registration number: 119215549RR0001



A benefit for  
the Belfry Theatre

# Crush

2016

*A Fine Wine Affair*

Sunday, October 23 · 5 – 8 pm  
*Inn at Laurel Point*

Fine Wine Live Auction	Wine Tastings	Cuisine Pairings	Silent Auction
---------------------------	------------------	---------------------	-------------------

**Belfry**  
Theatre

250 385 6815  
[www.belfry.bc.ca/crush](http://www.belfry.bc.ca/crush)

Tickets \$95  
Includes a generous tax receipt

Generously supported by



# Bravo!

The Belfry Theatre gratefully acknowledges the financial support of The Canada Council for the Arts, the Government of Canada, the Province of British Columbia through the British Columbia Arts Council and the Gaming Policy and Enforcement Branch, the Capital Regional District Arts Development Office and the City of Victoria.



## Season Sponsors

Cook's Day Off  
Helijet  
Times Colonist

## Show Sponsors

Allison Piano  
Broadmead & Oak Bay Hearing Clinics  
Graham Isenegger & Neil Chappell  
of CIBC Wood Gundy – Blue Heron Group  
The Co-operators General Insurance Company  
Larsen Music  
Mothering Touch  
TD Bank Group  
Thrifty Foods

## Belfry 101 Sponsor

The Joint Pizzeria & Deli  
RBC Emerging Artists Project

## Crush Sponsors

Boulevard Magazine  
The Cooperators General Insurance Company  
Everything Wine  
Inn at Laurel Point  
Odlum Brown Limited

## Facility and Operations Sponsors

CD Specialty Cleaning & Restoration  
Costa Verde Landscaping  
Dowell's Moving & Storage  
The Finishing Store  
Gabriel Ross Furniture  
KPMG  
Monk Office  
Prism Imaging  
Showcase Awards  
The Soap Exchange

## Floral Sponsor

Jennifer Roberts Florist

## Hospitality Sponsors

Caffé Fantastico  
Charelli's Delicatessen  
Everything Wine  
Sea Cider  
Spinnakers Brewpub & Guesthouse

## Host Hotels and Accommodation Sponsors

Accent Inns  
The Fairmont Empress  
Garden Oaks Fine Accommodation  
The Magnolia Hotel & Spa  
Villa Marco Polo

## Media Sponsors

Boulevard Magazine  
FOCUS Magazine  
Times Colonist

## SPARK Festival Sponsors

Government of Canada  
Hotel Zed  
CVV Magazine

## Upstage Magazine Sponsor

Fastrac Printing

## Foundations

APM Fund for the Arts  
through the Victoria Foundation  
Barnes Family Foundation  
through the Victoria Foundation  
Belfry Theatre Society Endowment Fund  
through the Victoria Foundation  
The Hamber Foundation  
The Jawl Foundation  
The Leon and Thea Koerner Foundation  
Elizabeth McPherson Fund for the Arts  
through the Victoria Foundation  
Provincial Employees Community Services Fund  
The Stewart Fund  
through the Vancouver Foundation  
Vancouver Foundation  
Victoria Foundation



## Gold Business Circle Members

de Vine Vineyards  
Orca Book Publishers  
Susan Salomonsson, Chartered Professional Accountant  
St. Margaret's School  
Carolann Steinhoff, Queensbury Securities Inc.

## Silver Business Circle Members

Field & Company LLP Chartered Accountants  
Garside Signs & Displays  
Horne Coupar Barristers and Solicitors  
Jean Medland, Realtor Re/Max Alliance  
Moxie's Bar and Grill  
RDH Building Science Inc.  
Storey's Gate Project Management & Construction Inc.  
Victoria Arts Marketing

# VOS

VICTORIA OPERATIC SOCIETY  
MUSICAL.THEATRE.SINCE 1945.

www.vos.bc.ca

250.381.1021

f Help us spread the word  
facebook.com/victoriaoperaticsociety

@VOSlocaltheatre

BACK BY POPULAR DEMAND!

BEST  
MUSICAL  
2005 TONY AWARD®

# MONTY PYTHON'S SPAMALOT™

A new musical lovingly ripped off from the motion picture  
MONTY PYTHON and the Holy Grail

SPAM is a registered trademark of Hormel Foods, LLC, used with permission here.

September 8 - 11, 2016  
McPherson Playhouse

www.rmts.bc.ca  
(250) 386-6121





Opening September 15, 2016  
**NATHAN BIRCH**



**WINCHESTER GALLERIES**

2260 Oak Bay Avenue 250-595-2777

[winchestergalleriesltd.com](http://winchestergalleriesltd.com)

*Detail: Two Trees in a Forest, a/c, diptych, 42.75" x 25"*