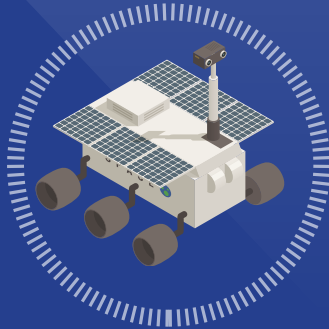


TO BUILD A TRUSTED FUTURE WITH THALES

ExoMars 2020

Thales has journeyed across our solar system to help in the search for signs of life on Mars

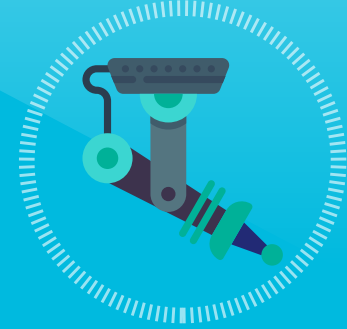


Thales helps transport **3 billion passengers** on **86 metro lines** in **40 of the world's largest cities**



Communication and supervision: **100 metro lines** in **30 cities**

Thales develops the most powerful pulsed lasers systems on earth, with a power throughput in excess of **10 petawatts.**



SpaceInspire

Thales Alenia Space's revolutionary digital satellite capable of reconfiguring itself to suit operators' requirements as they evolve



COSMO-SkyMed

This constellation is providing data that will enable experts to monitor deforestation in the Brazilian Amazon.



Sea Fire, entirely digital fixed panel naval radar and a world first. Soon to be equipped on the French Navy's newest rapid deployment Frigates.

Thales equips over **70 Types of Aircraft**

(fighters, military, transports, helicopters, drones etc.)



50 Navies (from submarines to aircraft carriers)

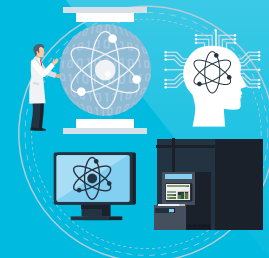


50 Land Forces (from infantry to vehicles)



Thales' TrUE AI

is a framework developed to apply Artificial intelligence to critical systems



Advanced research in quantum sensors and quantum communications and ultimately quantum computing

Thales protects **80%** of the world's banking transactions and secures information systems of **19 of the world's 20 largest banks**



Thales secures more than **400 sites** and critical infrastructures worldwide



200+ government programmes deployed for civil identity, biometrics and law enforcement

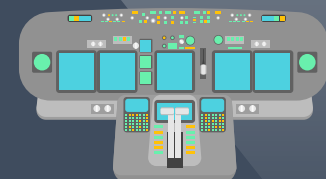


3,5 billions euros invested each year in R&D. More than **1 billion €** is self-funded.



Avant Next Gen IFEC

Uses TrueAI to give passengers a fully connected, personalised, and immersive experience, that opens up the cabin to the world and enhances the passenger experience



Future cockpit: the flytX cockpit achieves a **30 to 40% reduction in volume**, weight and power consumption compared to traditional systems.

THALES

Search: Thalesgroup

